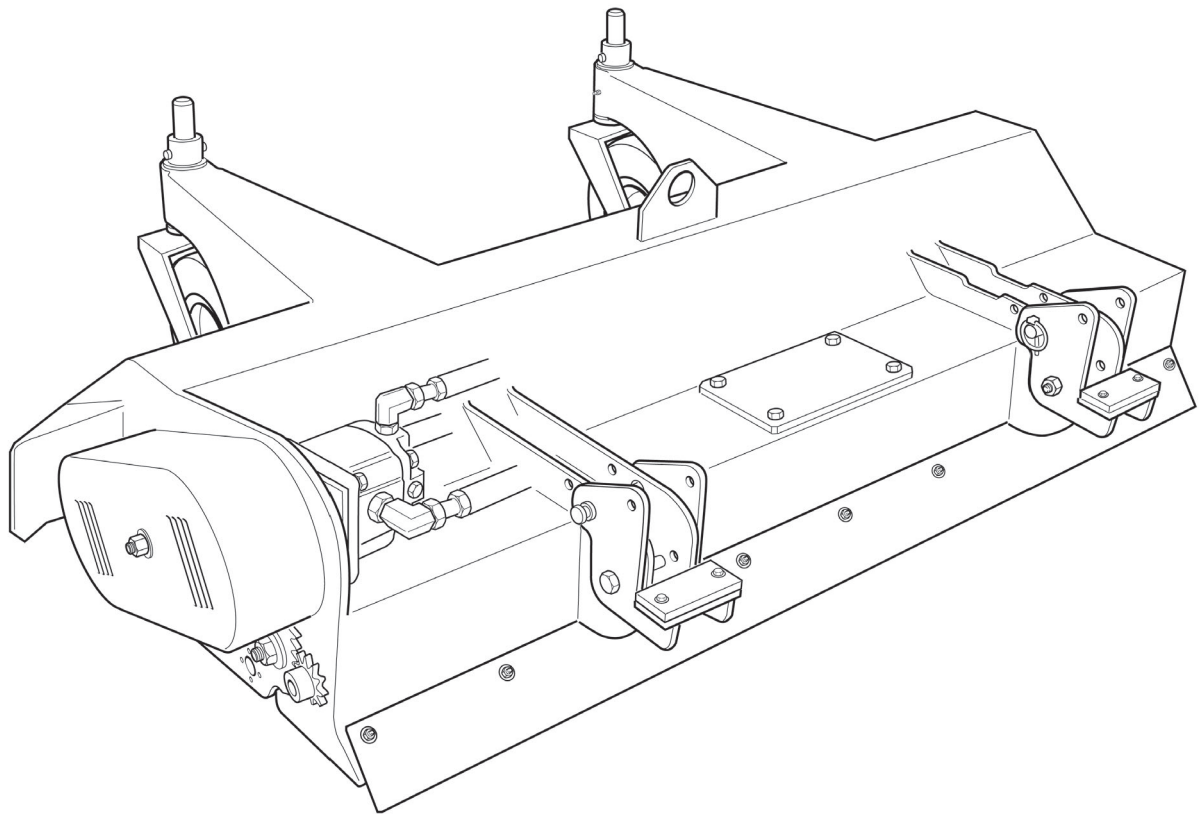




---

# Operation Manual and Parts Book

Wessex ProLine TGX 150-H  
Hydraulic Outfront Flail Mower



---

Product Code: L2019



GB

Issue November 2014

# CONTENTS

---

Welcome to your new Wessex Machine .....	2
Safety Decals .....	3
Important Safety Warnings .....	4
Warranty .....	5
Setting up your Mower .....	6
Connecting Hydraulic Coupling .....	6
Starting up the Mower .....	6
Setting the cutting height .....	7
Maintenance .....	8
Belt adjustment .....	8
Lubrication .....	8
Flail Blades - Changing .....	8
Troubleshooting .....	9
Winter Storage .....	9
Safety Training Induction .....	10
Daily Inspection Record .....	11
Specification .....	12
Parts Illustration - TGX150-H Body Assembly .....	13
Parts List - TGX150-H Body Assembly .....	14
Parts Illustration - TGX150-H Drive Assembly .....	15
Parts List - TGX150-H Drive Assembly .....	16
CE Certificate .....	17

## WELCOME TO YOUR NEW WESSEX PROLINE TGX150-H

---

Thank you for purchasing a Wessex Proline TGX150-H. As a Broadwood customer, you now number among the most important people of our business and we will endeavour to give you the best service available through our dealer network.

Please read this Manual carefully and familiarise yourself and other persons that will be using the machine with its contents, to ensure the optimum performance and working life of your machine. It is advisable that a copy of this Manual is kept in the workshop and one copy with the machine. Further copies are available through your dealer.

On delivery, your dealer should go through the workings of the machine with you, explaining the setting up procedures, all of which are contained in this manual for further reference. The Warranty Registration Form must also be completed and returned to us **within 7 days of delivery** in order to validate the Warranty.

**PLEASE READ THE FOLLOWING PAGES CAREFULLY BEFORE USING YOUR MACHINE AND KEEP THIS MANUAL IN A SAFE PLACE.**



**THIS SAFETY SYMBOL IS TO ALERT OPERATORS OF A HAZARD  
THAT MAY RESULT IN INJURY.  
ALWAYS FOLLOW INSTRUCTIONS CAREFULLY.**

## SAFETY DECALS



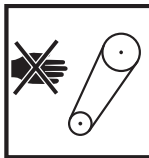
- GB **ATTENTION** Description of pictograms.  
 F **ATTENTION** Description des pictogrammes.  
 D **VORSICH** Beschreibung der Piktogramme.



- GB Read Operating manual before use.  
 F Lisez Manual D'Opération avant l'utilisation.  
 D Vor der Benutzung, Betriebshandbuch lesen.



- GB Protective eyewear, footwear, gloves and ear protectors must be worn.  
 F Lunettes de protection, chaussures gants, protégés-oreilles doivent être portées.  
 D Schutzbrille, Schuhe, Handschuhe und Gehörschutz getragen werden muss.



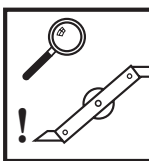
- GB Never remove guards or attempt adjustment until rotor has stopped.  
 F Ne retirez jamais les gardes ou d'ajustement tentative jusqu'à ce que toutes les pièces mobiles ont été interrompus.  
 D Schutzvorrichtung niemals abnehmen oder einstellung versuchen, bevor der rotor abgestellt.



- GB Bystanders must be at least 20 metres from machine range of action.  
 F Des spectateurs doivent s'écarter au moins 20 mètres du rayon d'action de la machine.  
 D Umstehenden müssen sich mindestens 20 Meter vom Maschinenbetriebsraum entfernen.



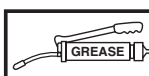
- GB Stand clear. Flying objects possible.  
 F S'écarter! Possibilité d'objets volants.  
 D Zurückbleiben! Herumfliegende Objekte möglich.



- GB Examine blades regularly. The operator is responsible for machine damage caused by unbalanced rotors.  
 F Examinez des lames régulièrement. L'opérateur est responsable des dommages à la machine provoqués par des rotors mal équilibrés.  
 D Klingen regelmäßig kontrollieren. Der Arbeiter ist an den durch unausgewogenen Rotoren Maschinenschäden verantwortlich.



- GB Keep hands and feet clear  
 F Garder les mains et les pieds.  
 D Halten Sie Ihre Hände und Füße.



- GB Grease points  
 F Les points de graissage  
 D Grease Punkte.

## IMPORTANT SAFETY WARNINGS

---



Wessex flail mowers are guarded for your protection, but you must always observe certain elementary precautions. Flail mowers are potentially **dangerous** machines and should be used with the greatest respect and **ALL OPERATORS MUST** read this manual and be aware of all safety precautions.

1. **NEVER** attempt any adjustment whatsoever, unless the machine is **COMPLETELY** at a standstill.
2. **NEVER** attempt to clear any obstructions around the mower unless the machine is **COMPLETELY** at a standstill.
3. **NEVER** remove belt guards unless the machine is **COMPLETELY** at a standstill.
4. **NEVER** remove safety guards which are provided for your protection.
5. **NEVER** operate the mower with people behind, keep everybody (especially children and animals) at a safe distance, **minimum 20 metres**.
6. Stand well back from the machine when cutters are spinning.
7. Regularly inspect the **BLADES AND FIXING BOLTS** to ensure that they are in tip-top condition. Replace blades **IMMEDIATELY** if any signs of fracture or excess wear becomes apparent. Serious damage, which is excluded from our warranty conditions, may result from using your mower with an unbalanced rotor. When replacing blades, always fit new mounting bolts and nuts to ensure that the rotor is balanced and running smoothly.

### HEALTH AND SAFETY - Noise at Work Regulations



In compliance with the above regulations, Ear Protectors must be worn when operating machinery.

## WARRANTY

---

Your Broadwood product or equipment is warranted free from defect in workmanship or manufacture for one year from date of purchase. Any parts which appear to us to be defective, either in material or workmanship shall be replaced or repaired at no cost to the purchaser, subject to the following conditions:

1. The registration card enclosed with this booklet must be returned to us within seven days of purchase.
2. Any failure in the machine should be reported in the first instance immediately to your dealer, who will act on your behalf to resolve the matter to your satisfaction.
3. The defective parts will be returned by your dealer to us, accompanied by a full statement describing the failure and the circumstances and conditions in which the failure occurred.
4. The following are specifically excluded from our terms of warranty:
  - a) Fair wear and tear, especially to belts, brushes, blades and spinners.
  - b) Damage to blades or brushes caused through incorrect positioning of the rotor (see instructions).
  - c) Damage caused by neglect or lack of lubrication.
  - d) Damage caused by misuse or abuse.
  - e) Damage caused whilst the machine is in transit.
  - f) Damage caused to the frame of the machine by running the machine with unbalanced rotors, blades or spinners.
  - g) Damage caused to the machine by use with loose nuts, bolts, screws or any other type of fittings.
5. The warranty is for the benefit of the first user only.
6. Wessex Machinery decisions will be final and binding.

**Note:**

**It is recommended that every machine is inspected after one hour of operation to check that all nuts, bolts, screws or any other types of fixings are tight and any loose fixings or components should be rectified as appropriate.**

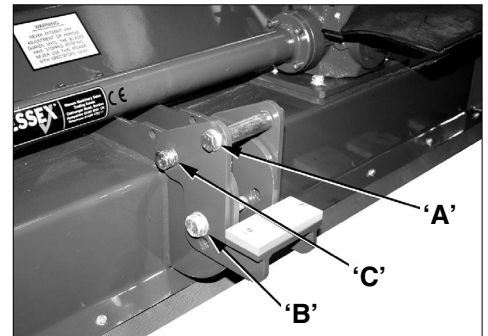
**Further inspections should be carried out at regular intervals thereafter.**

## SETTING UP YOUR MOWER

---

Ensure that the TGX150-H is level when on its wheels and the rear roller. With the mower deck on level ground, drive the Ransomes HR3300T up to the mower deck.

- Remove Bolt 'B' from the coupling, the coupling bracket pivots around Pin 'C'.
- Remove the lynch pin from Pin 'C', partially withdraw Pin 'C' and couple the tractor link arm onto Pin 'C' and replace the lynch pin.
- This must be carried out on both sides of the mower deck.
- Pivot the coupling bracket and place bolt in the most suitable hole so that the link arm is midway between Hole 'A' and the nylon plate.
- Do not over tighten Bolt 'B', as this is a pivoting part.



## CONNECTING HYDRAULIC COUPLING

---

As you look under the front of the tractor, the hydraulic couplings are very easily identified and colour coded. As you look at the front of the tractor the coupling on the left hand side is yellow, the one on the right hand side is red and the smaller coupling is in the centre. Simply connect the couplings, the mower deck is now ready to work.

## STARTING UP THE MOWER

---

Make sure that there is no debris or objects underneath the mower deck and that the blades are clear of the ground before engaging the Hydraulic Drive. Set the engine speed to about 1/3 of its normal speed and engage the cutter switch which is on the instrument panel of the tractor, then increase the engine throttle speed.

## SETTING THE CUTTING HEIGHT

---

Cut for approximately one metre and then adjust cutting height if required.

This should be done simultaneously via the front wheels and the rear roller to ensure the machine is kept level.

### ADJUSTING THE FRONT WHEELS

- Raise the machine using the mower lift (joystick on the tractor control panel).
- Remove the cross bolt from the bush, raise or lower the wheel by the desired number of holes.
- Replace the cross bolt in the bush.

### ADJUSTING THE ROLLER

- Raise the machine using the mower lift (joystick on the tractor control panel).
- Slacken off the roller clamp bolts on either side of the mower. The roller then drops to its bottom position.
- Lower the machine onto its front wheels. When the machine is sitting on the ground level, then partially tighten the clamping nuts.
- For fine adjustment, use a spanner on the sprocket nut.
- Tighten the clamping nuts on the slots.
- The flail mower should always be level when mowing.
- Make sure no one is facing the machine and that there no risk of the blades expelling any debris. With the engine at low revs, engage the drive. Gradually increase the engine speed until you reach nominal speed.
- If the machine vibrates, stop the drive and find out the reason for this. Having solved this, then start working, adjusting the speed of forward movement according to the density of the vegetation that is being cut.



## MAINTENANCE

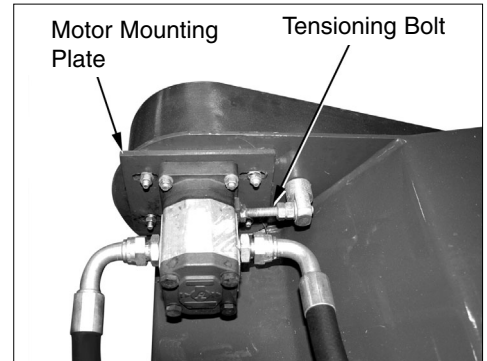
---

- **IMPORTANT!** Check that all fastening sets (bolts and nuts) are tight after the first hour of operation.

## BELT ADJUSTMENT

---

- The belts are tensioned in the factory but they will stretch after two or three hours work. It is important to check and re-tension after three hours work.
- To tighten the belts, remove the belt cover, slacken off the 4 bolts in the slots of the hydraulic motor mounting plate.
- Adjust the tensioning bolt beside the hydraulic motor, to the desired belt tension and re-tighten the bolts in the slots.
- **NOTE!** Correct belt tension is approximately 12-15mm of deflection under thumb pressure, halfway between the pulleys.
- If the belts are cut, frayed or damaged in any way, they should be replaced immediately.
- Re-fit the belt cover and tighten the fixing nut.



## LUBRICATION

---

### DAILY (8-10 working hours)

- Grease Main Rotor bearings. (x2)
- Grease Roller bearings (x2)
- Grease Wheel castors (x2)
- Grease Wheel bearings (x2)

## FLAIL BLADES

---

- The condition of the flail blades should be inspected daily. Damaged flail blades cause imbalance in the rotor and in turn, will cause serious damage to the mower, **which is specifically excluded from our Warranty Conditions.**
- If the mower begins to vibrate, stop work immediately and investigate. Almost certainly the cause will be damaged flail blades, or foreign objects around the flail rotor.

### FLAIL BLADES - CHANGING

- When fitting new flail blades, unhitch the mower from the tractor and turn the mower over (preferably with a hoist or mechanical lifting equipment). Remove the damaged flail blades and replace.
- It is important that the rotor remains balanced. Always fit new bolts and nuts when replacing the flails and preferably fit a full set. If only one or two flails are being replaced, they should be fitted opposite to each other on the rotor, to keep the rotor balanced.

## TROUBLESHOOTING

---

<b>FAULT</b>	<b>CAUSE</b>	<b>REMEDY</b>
Leaving wheel track uncut	1. Forward speed too fast 2. Cutting height too high	Reduce forward speed. Lower cutting height.
Bad quality of cut	1. Forward speed too fast 2. Excessive blade wear 3. Belts slipping	Reduce forward speed. Replace blades. Tighten belts.
Narrow strip uncut	1. Possibly missing or broken blade	Inspect blades and replace as necessary.
Excessive vibration	1. Damaged or missing blades 2. Bent flail rotor 3. Main rotor bearing failed 4. Loose part	Inspect and replace blades. Inspect rotor. Inspect bearing, replace if damaged. Check all nuts & bolts are tight.
Excessive scalping	1. Cutting height too low	Raise cutting height.

## WINTER STORAGE

---

Before winter storage, the TGX150-H should be thoroughly inspected.

- Repair or replace any worn or broken parts
- Take special care to look at the flail blades, rotor and the bearings.
- Remove the belts and ensure that the rotor is free-spinning.
- Make sure that the belts are in good condition before re-fitting.
- Thoroughly wash the machine to remove all oil, grease, debris and materials.
- Grease up all grease points before storage to avoid any corrosion.



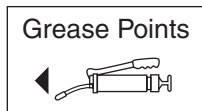
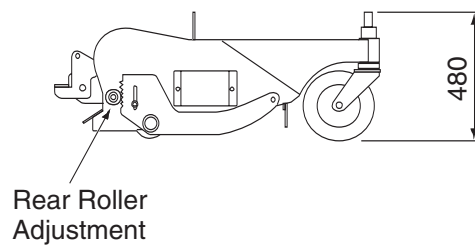
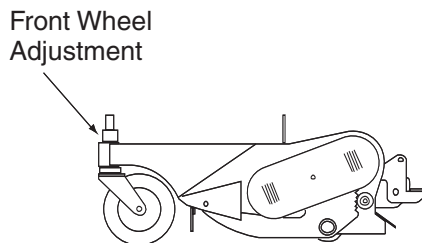
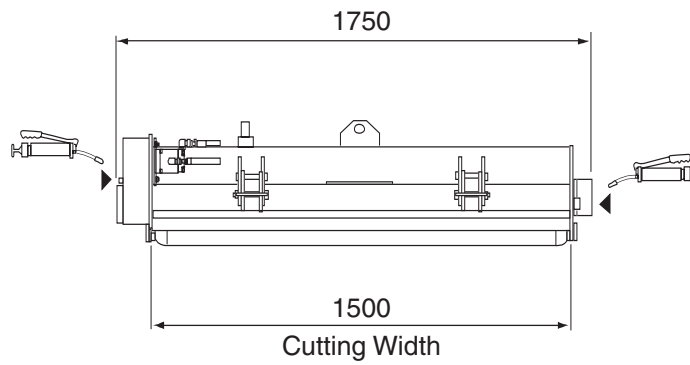
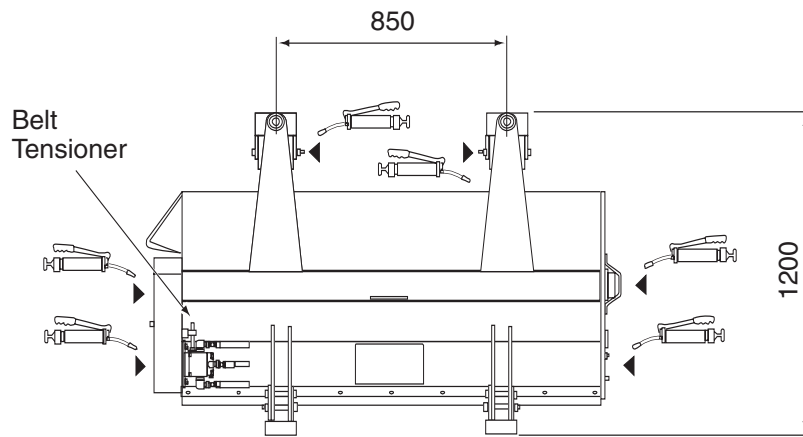
# DAILY INSPECTION RECORD

OPERATOR'S NAME	DATE OF INSPECTION	HOURS	Flail Rotor, remove tangled objects	Inspect condition of Flail Blades	All bolts and nuts, re-tighten if req'd.	Grease Rotor Bearings	Grease Roller Bearings	Grease Wheel Castors	Grease Wheel Bearings	Inspect Tyres	Inspect Hydraulic Hoses	Inspect condition of Belts	Inspect tension of Belts	Inspect front and rear Flexi Flaps

# SPECIFICATION

## MODEL: TGX150-H

Cutting Width:	1.50m	Weight:	220kg
Overall Width:	1.75m	Cutting Height Range:	25 - 100mm
Overall Length:	1.2m	Solid Tyres	
No. of Flails:	32		



# PARTS ILLUSTRATION TGX150-H BODY

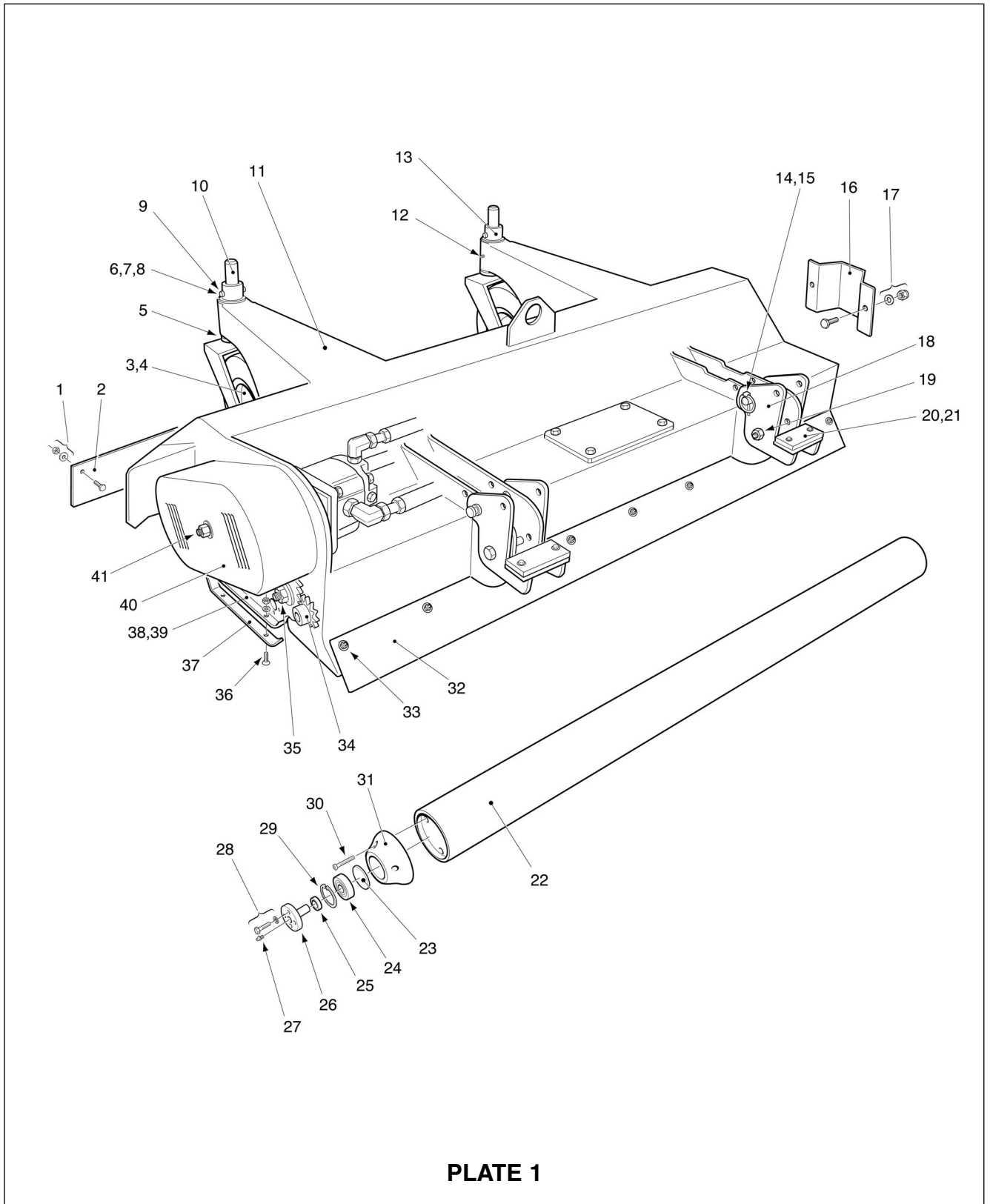
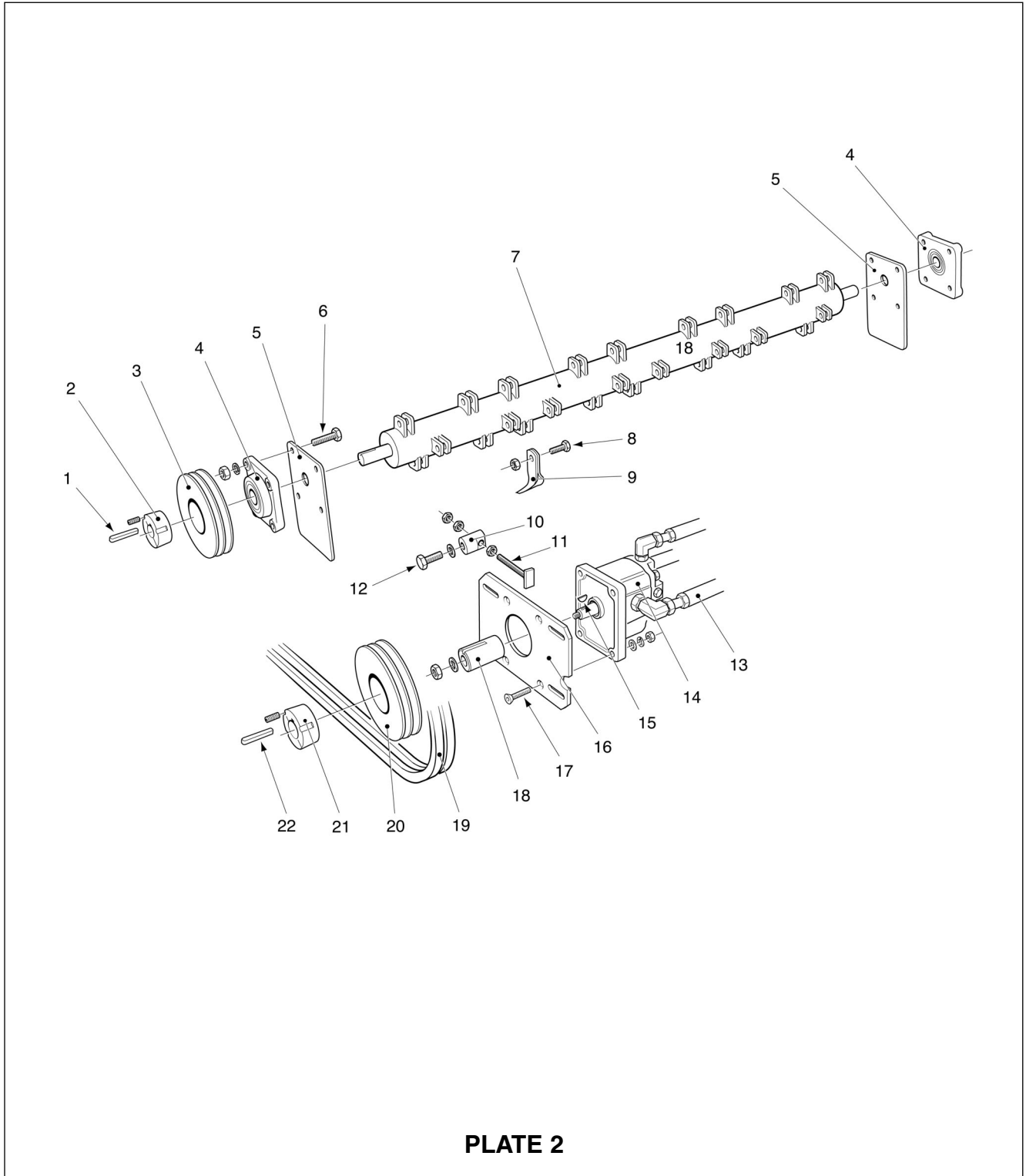


PLATE 1

PA R T S LIST TGX150-H BODY - PLATE 1

Item No.	Part No.	Description	Qty. per Machine
1	31201	Rubber Skirt F/Set	1
2	12778	Rubber Skirt	1
3	4652	Wheel	2
4	30601	Wheel Axle Bolt	2
5	13851	Castor Bush	2
6	14051	Castor Washer	2
7	14151	Castor Bush Top Plate	2
8	4522	Circlip	2
9	33101	Retaining Bolt	2
10	14251	Wheel Fork	2
11	12179	Main Deck	1
12	0246	Grease Nipple	2
13	13951	Castor Body Carrier	2
14	0227	Lynch Pin	2
15	0426	Pin	2
16	13777	Bearing Protector	1
17	30801	Bearing Protector F/Set	1
18	8658	Tractor Bracket	2
19	30901	Bolt Set	2
20	8758	Pad	2
21	31901	Pad F/Set	2
22	3355	Roller	1
23	3355A	Roller Blanking Plug	2
24	0838	Roller Bearing	2
25	3755	Roller Spacer	2
26	3555	Roller Mount	2
27	0246	Grease Nipple	2
28	31101	Roller Mount F/Set	2
29	4422	Circlip	2
30	31001	Roller End F/Set	2
31	3655	Roller End	2
32	12778	Skirt	1
33	31201	Skirt F/Set	1
34	15056	Adjusting Shaft Assembly	1
35	31301	Roller Arm Clamp Bolt	2
36	8503	Skid Shoe F/Set	2
37	4274	Skid Shoe	2
38	3774	Roller Arm Left Hand	1
39	3674	Roller Arm Right Hand	1
40	13877	Drive Cover	1
41	31401	Drive Cover F/Set	1
N/S	22180	Hose Loop	1
N/S	12179	Skirt Clamp Bar	2

# PARTS ILLUSTRATION TGX150-H DRIVE ASSEMBLY



**PLATE 2**



PA R T S LIST TGX150-H DRIVE ASSEMBLY - PLATE 2

Item No.	Part No.	Description	Qty. per Machine
1	0547	Key	1
2	12262	Taper Lock	1
3	11962	Rotor Pulley	1
4	7438	Bearing	2
5	13977	Bearing Shield	2
6	31601	Bearing Shield F/Set	2
7	14466	Rotor Shaft	1
8	18593	Flail Bolt	32
9	10170	Flail	32
10	12557	Anchor	1
11	21580	Adjuster	1
12	31701	Anchor F/Set	1
13	16456	Hose Kit	1
14	16356	Hydraulic Motor	1
15	2047	Key	1
16	16156	Motor Plate	1
17	31801	Bolt	1
18	16256	Motor Coupling	1
19	5634	Belt	2
20	10962	Pulley	1
21	11862	Taper Lock	1
22	2147	Key	1
N/S	14666	Rotor Spacer	2



## *Certificate of CE Conformity*

Machine Model:

TGX 150-H

Description:

FLAIL MOWER

*I hereby certify that the machine detailed hereon  
conforms to:*

**European Directives 2008/42/EC  
Supply of Machinery Regulations 2008  
As amended 91/368EEC – 93/44EEC – 93/68EEC**

Signed:

A handwritten signature in black ink, consisting of a large, stylized 'R' followed by a horizontal line and a small flourish.

.....  
Quality Manager

Date:

26 Oct 2010

### **Wessex International**

Charlton House, Caxton Place, East Portway Industrial Estate, Andover, Hampshire SP10 3QN  
Telephone: 01264 345870 Fax: 01264 345 880

[www.wessexintl.com](http://www.wessexintl.com)



**Wessex International**  
**Charlton House, Caxton Close, East Portway Industrial Estate, Andover Hampshire. SP10 3QN**  
**Telephone: 01264 345870 Fax 01264 345880**  
**e-mail: [sales@wessexintl.com](mailto:sales@wessexintl.com)**

**[www.wessexintl.com](http://www.wessexintl.com)**

---