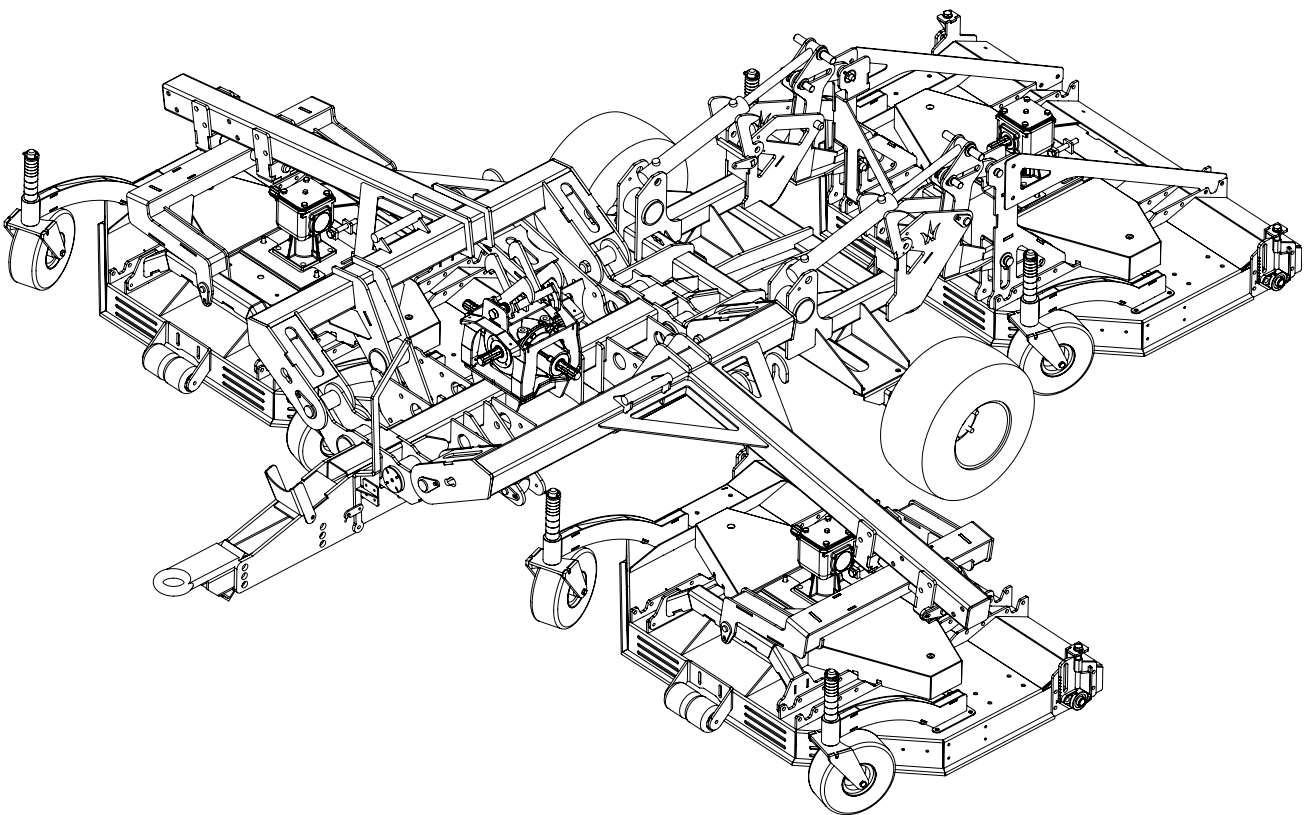




---

# Operation Manual and Parts Book

Wessex CRX-410 Tri-Deck Multicut Mowers



Product Code: L2054

---



Issue March 2016



# CONTENTS

---

Welcome to your new Wessex Product .....	2
Safety Decals .....	3, 4
Important Safety Warnings .....	5
Warranty .....	6
Linking up to the Tractor .....	7
Using the Mower .....	7
Altering the Cutting Height / Maintenance .....	8
Lubrication / Belt Adjustment .....	9
Troubleshooting / Winter Storage .....	10
Cutting Blades / Specifications .....	11
Part Illustration / Parts List - CRX Mainframe .....	12
Parts Illustration / Parts List - CRX Wheel Assembly .....	13
Parts Illustration CRX Rollers .....	14
Parts List - CRX Rollers .....	15
Parts Illustration - CRX Drive and Baffles .....	16
Parts List - CRX Drive and Baffles .....	17
Parts Illustration - CRX Spindle and Blade Assembly .....	18
Parts List - CRX Spindle and Blade Assembly .....	19
Parts Illustration - Gearbox .....	20
Parts List - Gearbox .....	21
Parts Illustration - CRX Trideck Chassis .....	22
Parts List - CRX Trideck Chassis .....	23
Parts Illustration - CRX Central Gearbox .....	24
Parts List - CRX Central Gearbox .....	25
Parts Illustration - CRX Wing Mounts .....	26
Parts List - CRX Wing Mounts .....	27
Parts Illustration - CRX Deck Latches .....	28
Parts List - CRX Deck Latches .....	29
Parts Illustration - CRX Rear Chassis .....	30
Parts List - CRX Rear Chassis .....	31
Parts Illustration - CRX Rear Deck Mount and Lightboard .....	32
Parts List - CRX Rear Deck Mount and Lightboard .....	33
PTO Shaft - Operation and Maintenance .....	34, 35
Safety Training Induction .....	36
Daily Inspection Record .....	37
Notes .....	38
CE Certificate .....	39

## **WELCOME TO YOUR NEW WESSEX PRODUCT**

---

Thank you for purchasing a Wessex product. As a Wessex customer, you now number among the most important people of our business and we will endeavour to give you the best service available through our dealer network.

Please read this Manual carefully and familiarise yourself and other persons that will be using the machine with its contents, to ensure the optimum performance and working life of your machine. It is advisable that a copy of this Manual is kept in the workshop and one copy with the machine. Further copies are available through your dealer.

On delivery, your dealer should go through the workings of the machine with you, explaining the setting up procedures, all of which are contained in this manual for further reference. The Warranty Registration Form must also be completed and returned to us **within 7 days of delivery** in order to validate the Warranty.

**PLEASE READ THE FOLLOWING PAGES CAREFULLY BEFORE USING YOUR MACHINE  
AND KEEP THIS MANUAL IN A SAFE PLACE.**



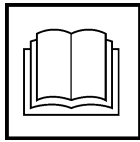
**THIS SAFETY SYMBOL IS TO ALERT OPERATORS OF A HAZARD  
THAT MAY RESULT IN INJURY.  
ALWAYS FOLLOW INSTRUCTIONS CAREFULLY**

## SAFETY DECALS

---



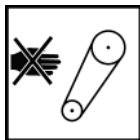
- GB **ATTENTION** Description of pictograms.  
 F **ATTENTION** Description des pictogrammes.  
 D **VORSICH** Beschreibung der Piktogramme.



- GB Read Operating manual before use.  
 F Lisez Manual D'Opération avant l'utilisation.  
 D Vor der Benutzung, Betriebshandbuch lesen.



- GB Ear defenders must be worn.  
 F Défenseurs des oreilles doivent être portés.  
 D Gehörschutz getragen werden.



- GB Never remove guards or attempt adjustment until rotor has stopped.  
 F Ne retirez jamais les gardes ou d'ajustement tentative jusqu'à ce que toutes les pièces mobiles ont été interrompus.  
 D Schutzvorrichtung niemals abnehmen oder einstellung versuchen, bevor der rotor abstellt.



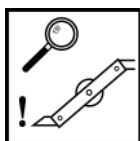
- GB Bystanders must be at least 20 metres from machine range of action.  
 F Des spectateurs doivent s'écarter au moins 20 mètres du rayon d'action de la machine.  
 D Umstehenden müssen sich mindestens 20 meter vom maschinenbetriebsraum entfernen.



- GB Stand clear. Flying objects possible.  
 F S'écarter! Possibilité d'objets volants.  
 D Zurückbleiben! Herumfliegende Objekte möglich



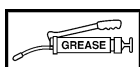
- GB Lift Machine before turning  
 F Levez la machine avant de la tourner  
 D Maschine aufheben, bevor man sie umdreht.



- GB Examine blades regularly. The operator is responsible for machine damage caused by unbalanced rotors.  
 F Examinez des lames régulièrement. L'opérateur est responsable des dommages à la machine provoqués par des rotors mal équilibrés  
 D Klingen regelmäßig kontrollieren. Der Arbeiter ist an den durch unausgewogenen rotoren maschinenschäden verantwortlich.



- GB Keep hands and feet clear  
 F Garder les mains et les pieds.  
 D Halten Sie Ihre Hände und Füße.



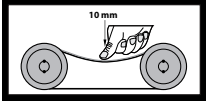
- GB Grease points  
 F Les points de graissage  
 D Grease Punkte.

## SAFETY DECALS

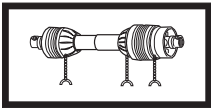
---



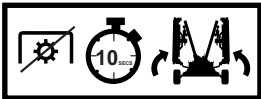
- GB Lifting Point  
F Point de levage  
D Anschlagpunkt



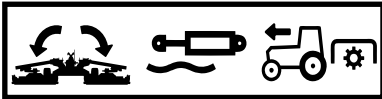
- GB CORRECT BELT TENSION: Check belt tension regularly: 10mm of belt deflection at thumb pressure between pulleys.  
F TENSIONNEMENT CORRECT DE LA COURROIE : Contrôler le tensionnement régulièrement : la déflexion de la courroie sous la pression du pouce entre les deux poulies doit être de 10 mm.  
D KORREKTE RIEMENSANNUNG: Riemenannung regelmäßig überprüfen: 10 mm Eindrücktiefe bei Daumendruck zwischen Riemenscheiben.



- GB Safety Chains must be anchored tightly. Never allow chains to wrap round PTO shaft. Grease PTO shaft regularly.  
F Chaînes de sécurité doit être ancré solidement. Ne laissez jamais les chaînes à entourer le transmission. Régulièrement graisse le transmission.  
D Sicherheitsketten müssen fest verankert sein. Lassen Sie niemals Ketten zu runden Zapfwelle zu wickeln. Fett Gelenkwelle regelmäßig.



- GB When machine is operating with the wings down, please ensure that the tractors hydraulic spool valve is in the float position.  
F Lorsque la machine est en marche avec les ailes vers le bas, s'il vous plaît assurer que le distributeur à tiroir hydraulique des tracteurs est en position flottante.  
D Wenn die Maschine mit Flügeln nach unten läuft, stellen Sie bitte sicher, dass der Schlepperhydraulik Schieberventil in der Schwimmstellung ist.



- GB Disengage the PTO drive and wait for 10 seconds before lifting wings into their latched position.  
F Désengager la prise de force et attendre 10 secondes avant de soulever les ailes dans leur position de verrouillage.  
D Lösen Sie den Zapfwellenantrieb und 10 Sekunden warten, bevor Flügel in ihre Verriegelungsposition anheben.

## IMPORTANT NOTICE

### FITTING PTO SHAFT TO MACHINE & TRACTOR

---

- All safety chains must be anchored tight enough to allow a small amount of movement, but not enough to wrap around the P.T.O. Shaft.
- Ensure that the shaft and guard is regularly greased to avoid overheating and to give lubrication.
- **Important:** Thoroughly read through the manufacturers instruction book before using the P.T.O. Shaft.

**P.T.O.Shafts are not covered by the Wessex Warranty.**

## IMPORTANT SAFETY WARNINGS

---



Wessex machines are guarded for your protection, but you must always observe certain elementary precautions. Machines are potentially **dangerous** and should be used with the greatest respect and **ALL OPERATORS MUST** read this manual and be aware of all safety precautions.

1. **NEVER** attempt any adjustment whatsoever, unless the machine is **COMPLETELY** at a standstill and the P.T.O. drive and blades have stopped turning. **Stop Engine and remove Tractor Key.**
2. **NEVER** attempt to clear any obstructions around the mower unless the machine is **COMPLETELY** at a standstill and the P.T.O. drive and blades have been stopped. **Stop Engine and remove Tractor Key.**
3. **NEVER** remove belt guards unless the machine is **COMPLETELY** at a standstill. **Stop Engine and remove Tractor Key.**
4. **NEVER** remove safety guards which are provided for your protection.
5. **NEVER** operate the mower with people around, keep everybody (especially children and animals) at a safe distance, **minimum 20 metres.**
6. Stand well back from the machine when cutters are spinning.
7. Regularly inspect the **BLADES AND FIXING BOLTS** to ensure that they are in excellent condition. Replace blades **IMMEDIATELY** if any signs of fracture or excess wear becomes apparent. Serious damage, which is excluded from our warranty conditions, may result from using your mower with an unbalanced rotor. When replacing blades, always fit new mounting bolts and nuts to ensure that the rotor is balanced and running smoothly.

### HEALTH AND SAFETY - Noise at Work Regulations

#### READING AT THE OPERATORS EAR

Wessex CRX Roller mower: Approximately 95 D.B.A

Depending on conditions and material being cut, this reading may alter, it is therefore advisable for users to do their own assessment.



In compliance with the above regulations, Ear Protectors must be worn when operating machinery.

## WARRANTY

---

Your Wessex product or equipment is warranted free from defect in workmanship or manufacture for one year from date of purchase. Any parts which appear to us to be defective, either in material or workmanship shall be replaced or repaired at no cost to the purchaser, subject to the following conditions:

1. The registration card enclosed with this booklet must be returned to us within seven days of purchase. Alternatively if you prefer, you may register your product via our Website.  
<http://www.wessexintl.com/warranty-registration>
2. Any failure in the machine should be reported in the first instance immediately to your dealer, who will act on your behalf to resolve the matter to your satisfaction.
3. The defective parts will be returned by your dealer to us, accompanied by a full statement describing the failure and the circumstances and conditions in which the failure occurred.
4. The following are specifically excluded from our terms of warranty:
  - a) Fair wear and tear, especially to belts, brushes, blades and bearings.
  - b) Damage caused through incorrect adjustment (see instructions).
  - c) Damage caused by neglect or lack of lubrication.
  - d) Damage caused by misuse or abuse, including impact damage to blades.
  - e) Damage caused whilst the machine is in transit.
  - f) **Damage caused to the frame of the machine by running the machine with unbalanced rotors, blades or spinners.**
  - g) Damage caused to the machine by use with loose nuts, bolts, screws or any other type of fittings.
5. The warranty is for the benefit of the first user only.
6. Wessex International decisions will be final and binding.

**Note:**

**It is recommended that every machine is inspected after one hour of operation to check that all nuts, bolts, screws or any other types of fixings are tight and any loose fixings or components should be rectified as appropriate.**

**Further inspections should be carried out at regular intervals thereafter.**



## LINKING UP TO THE TRACTOR

---

1. Always hitch and unhitch on level ground for safety reasons.
2. When hitching up, never allow anyone to stand between the tractor and the implement.
3. Reverse the tractor up to the CRX Tri-deck and hitch up to the towing hitch. When using a drawbar pin ensure that it is secured with a lynch pin.
4. When in work the drawbar of the CRX Tri-deck should be level with the ground, to adjust simply remove drawbar holding bolts and pivot up or down, or turn the drawbar over for extra adjustment.
5. Stop the tractor's engine and couple the P.T.O. Shaft to the tractor putting the wide angle joint onto the tractor. Always hook the P.T.O. chains onto the lugs provided and shorten the chains to suit. The P.T.O. chains must not encircle the P.T.O. guard, as this will cause premature P.T.O. guard damage and wear. Ensure that the P.T.O. Shaft is correctly located and locked in place. (See P.T.O. Shaft Instructions at the back of the book).
6. If so equipped, connect the lighting plug into the tractor.
7. Connect the hydraulic hoses to the tractor.
8. **IMPORTANT:** Ensure that the bottom link arms of the tractor do not come into contact the the P.T.O. Shaft when turning. We recommend that you remove or raise up the tractor link arms by adjustment of the arms.
9. For drawbar use the CRX Tri-deck can be equipped with a screw jack. To avoid damage to the jack, remove and stow before moving or operating the mowing decks.

## USING THE CRX TRI-DECK

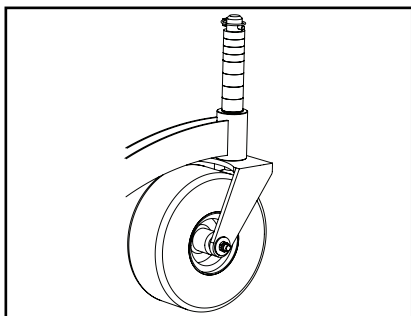
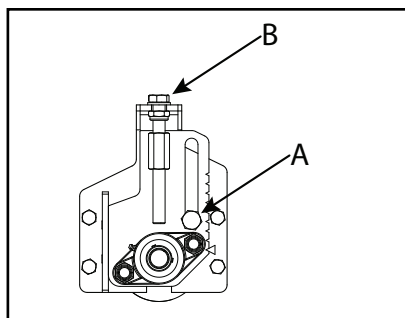
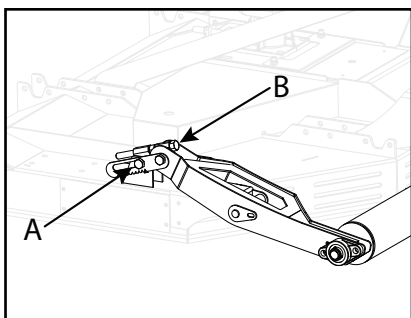
---

1. Having hitched up to the tractor you are now ready to lower the mowing decks to the ground.
2. Operate the hydraulic functions to take the weight off the safety catches of the side and rear deck carriers.
3. Release the safety catches by activating the catch lever beside the drawbar at the front of the machine, then slowly activate the hydraulics to lower the decks to the ground.
4. **Important** Ensure that all bystanders are at a safe distance from the machine before lowering the decks.
5. **It is important** that the hydraulic spools on the tractor are in the float detent position so that the machine will float and follow the ground contours. If the tractor has no float detent the spool can be locked in the down (dump position) by means of an elastic cord restraint fixed to the spool lever. If you are unsure of the float operation for the tractor's hydraulics consult your Wessex Dealer for advice. If the CRX Tri-deck is not operated with the tractor in float, damage to the structure of the mower may result. The CRX Tri-deck can be specified with the Wessex ProLift system that allows wing float through an electro-hydraulic block on a non floating spool tractor.
6. **NEVER USE THE MOWER IN P.T.O. SPEEDS IN EXCESS OF 540 RPM.**
7. Slowly engage the P.T.O. drive and select the forward speed carefully. Start off slowly until you are confident with the working width and capability of the machine.
8. When mowing longer thicker grass a slower forward speed will need to be selected.
9. When mowing the CRX Tri-deck is capable of following very undulating ground conditions and with care the side arms will happily run up or down banks of up to 30 degrees.
10. When the mowing decks go beyond 30 degrees the drive will automatically disengage from driving the mowing decks.
11. **When lifting the mowing decks up and out of work stop the PTO drive before lifting. SERIOUS DRIVE LINE DAMAGE WILL RESULT IF THIS ADVISE IS IGNORED.**

## ALTERING THE CUTTING HEIGHT (Rollers)

---

1. Lift the mower slightly off the ground on the hydraulics and switch off the tractor.
2. Loosen, but do not remove the fixing bolts **(A)**. There are two each side of the main deck.
3. Turn the adjusting screws **(B)** clockwise to lower the rollers, thus increasing the cutting height, or anticlockwise to raise the rollers, thus reducing the height of cut. Ensure that all screws are adjusted by the same amount otherwise the cut will be uneven. There is a triangular marker on the adjuster to assist in checking for even adjustment.
4. Tighten all fixing bolts.
5. Re-adjust the top link so that then the machine is on level ground the pin is in the centre of the slot.



To adjust the cutting height when wheels are fitted. Remove the Linch pin at the top of the wheel stem and move the spacers from above to below the wheel arm. The more spacers that are below the arm, the higher the cut. There are two sizes of spacer 12.5mm and 25mm, these correspond to the triangular markers on the roller adjustment, which are at 25mm spacings.

## BELT ADJUSTMENT

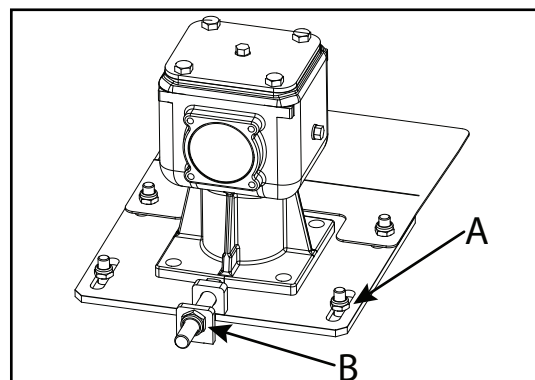
---

The drive belts are adjusted by moving the gearbox on its mounting bracket in relation to the mower deck.

First, stop the tractor engine and remove the starting key. Second, slacken the four holding bolts **(A)** on the base of the gearbox-mounting bracket. To tighten belts, turn the rear adjusting nut **(B)** anticlockwise, and to slacken the belts, turn clockwise.

The belts should be free to move about 12 mm under finger pressure. If they are too tight, there will be undue stress on the driven parts.

When belts are adjusted correctly, lock the adjusting nut in place, and tighten the gearbox holding bolts. Both drive belts are tightened equally.



## MAINTENANCE

---

To keep your CRX Tri-deck in excellent working condition we recommend that you follow this maintenance programme:-

### REGULARLY:-

- Lubricate your CRX as indicated in this manual.
- Check all drive belts for tension and replace if cut, frayed or worn.
- Inspect all blades regularly and replace any that are badly worn, chipped or broken which may cause an imbalance in the blade rotor assembly.
- **DO NOT RUN MACHINE WITH UNBALANCED ROTORS THIS WILL CAUSE DAMAGE (NOT COVERED BY WARRANTY).**
- Inspect front and rear rollers.
- Inspect for loose fixings and rectify immediately.
- Regularly clean all debris from under the belt covers.

At the end of the grass cutting season always clean the CRX Tri-deck thoroughly and grease before winter storage.

Only use genuine Wessex parts in the event of replacing worn parts. This will ensure the continued safe use of your CRX Tri-deck and the validity of your warranty.

## LUBRICATION

---

### DAILY:- (8 Hours)

- Grease Roller bearings.
- Inspect Blades

### WEEKLY:- (40 Hours)

- Grease height adjustment points.
- Check Gearbox oil level.
- Lubricate all adjusting threads.
- Grease Cutter Spindle bearings.
- Grease P.T.O. Shaft bearings.
- Grease P.T.O. Tube slides.

## TROUBLESHOOTING

---

FAULT	CAUSE	REMEDY
Leaving wheel track uncut	1. Forward speed too fast 2. Cutting height too high 3. Excessive blade wear	Reduce forward speed Lower cutting height Replace blades
Bad quality of cut	1. Forward speed too fast 2. Excessive blade wear 3. Belts slipping	Reduce forward speed Replace blades Tighten belts
Narrow strip uncut	1. Possibly missing or broken blade	Inspect blades and replace as necessary
Excessive vibration	1. Damaged or missing blades 2. Main spindle bearing play 3. Loose part	Inspect and replace blades Inspect bearing, replace if damaged Check all nuts and bolts are tight
Excessive scalping	1. Cutting height too low	Raise cutting height.

## WINTER STORAGE

---

Before winter storage, the CRX Tri-deck should be thoroughly inspected:-

- Repair or replace any worn or broken parts.
- Check oil level in the gearbox. Top up or change with EP90 gear oil.
- Take special care to look at the blades, rotor and the bearings.
- Remove the belts and ensure that the rotors are free-spinning.
- Make sure that the belts are in good condition before re-fitting.
- Thoroughly wash the machine to remove all oil, grease, debris and materials.
- Grease all grease points before storage to avoid any corrosion.
- After pressure washing always run mower for a time to expel any water from bearings.
- It is recommended to apply a light oil to the under-deck surfaces to protect the machine from corrosion while in storage.

## CUTTING BLADES

---

- Inspect the Cutting blades regularly.
- Badly worn or broken blades will unbalance rotors causing vibration.
- **Do not use with unbalanced rotors.**
- Always replace blades on both ends of bars to avoid imbalance.
- Always lift machine and prop the machine up with axle stands. Never get underneath an unsupported machine.
- Replace blade tips using new nylock locking nuts every time.

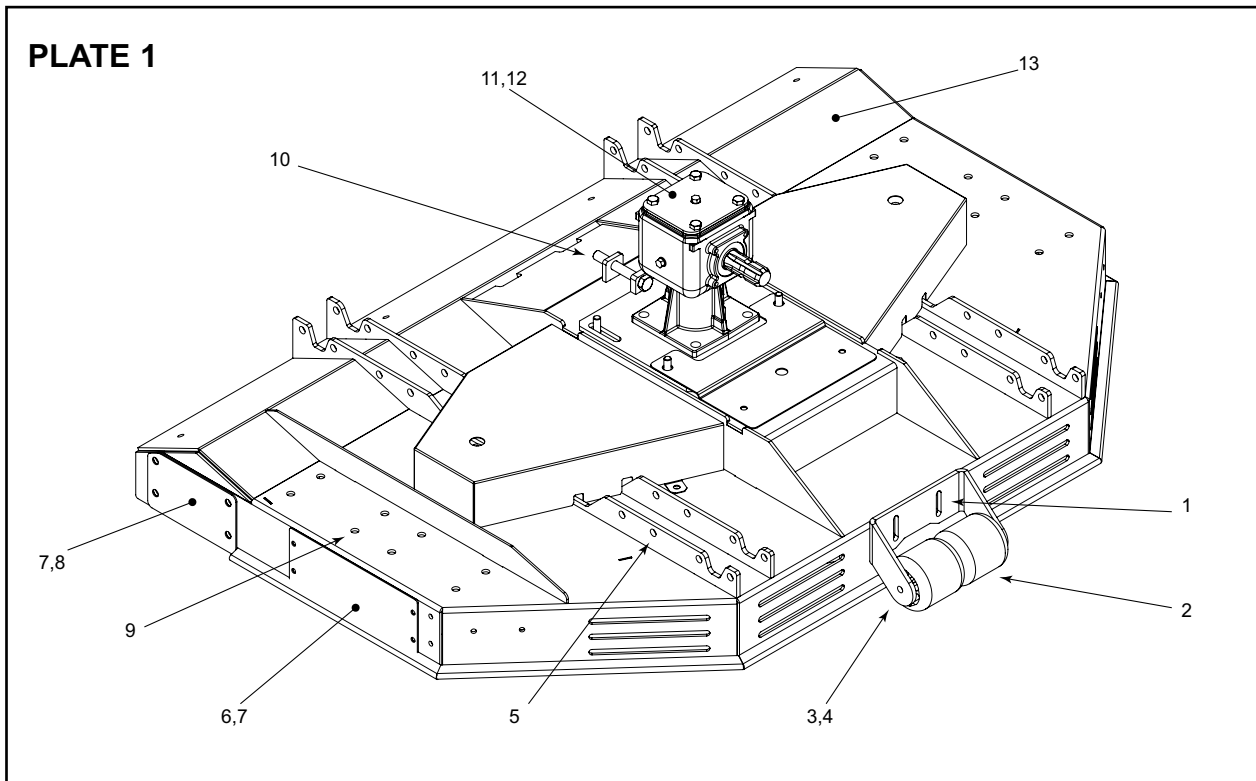
## SPECIFICATIONS

---

### Wessex Proline CRX Multicut Mowers

<b>Model:</b>	<b>CRX-410</b>
Cutting Width:	4.1m
Overall Width:	4.24m
Overall Length: (Rollers)	4.51m
Overall Length: (Combination)	4.51m
Overall Length: (4 Wheels)	5.10m
Weight:	1500kg
Cutting Height Range (Rollers):	10-110mm
Cutting Height Range (Wheels):	10-150mm
No. of Cutting Spindles:	9 (18 blades)
Gearbox Oil:	EP90

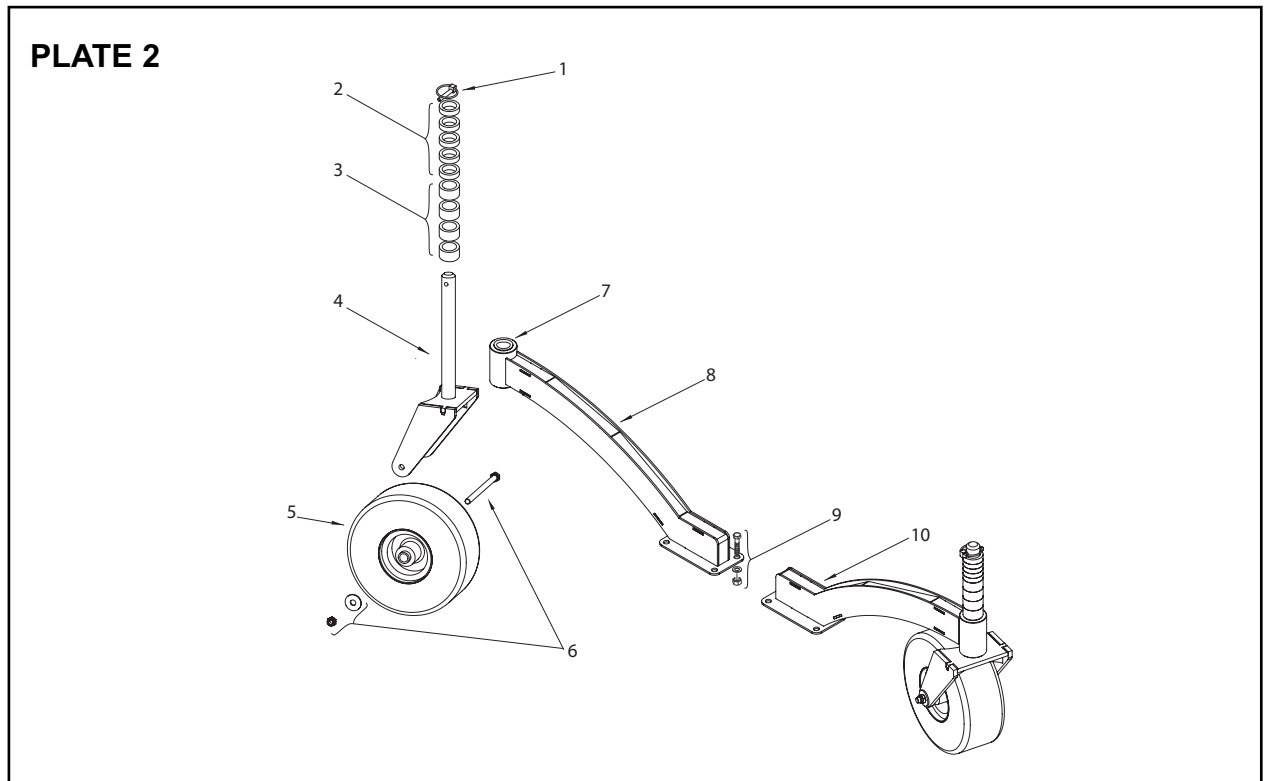
## PARTS ILLUSTRATION - CRX MAINFRAME



## PARTS LIST - CRX MAINFRAME

Item No.	CRX150 Part No.	Description	QTY
1	WX-5203	Roller Bracket Fastening Set	1
2	WX-6452	Anti Scalp Roller	2
3	WX-10455	Anti Scalp Roller Bracket	1
4	WX-15503	Anti Scalp Roller Bolt	1
5	WX-16403	Fastening Set	12
6	WX-32776	Side Discharge Blanking Plate	1
7	WX-4401	Fastening Set (4 Bolts)	3
8	WX-27076	Roller Blanking Plate	2
9	WX-AP1007	Blanking Plug	16
10	WX-1257	Adjuster	1
11	WX-5257	Gearbox	1
12	WX-0547	Key	1
13	WX-20279	Mainframe	1

## PARTS ILLUSTRATION - CRX WHEEL ASSEMBLY

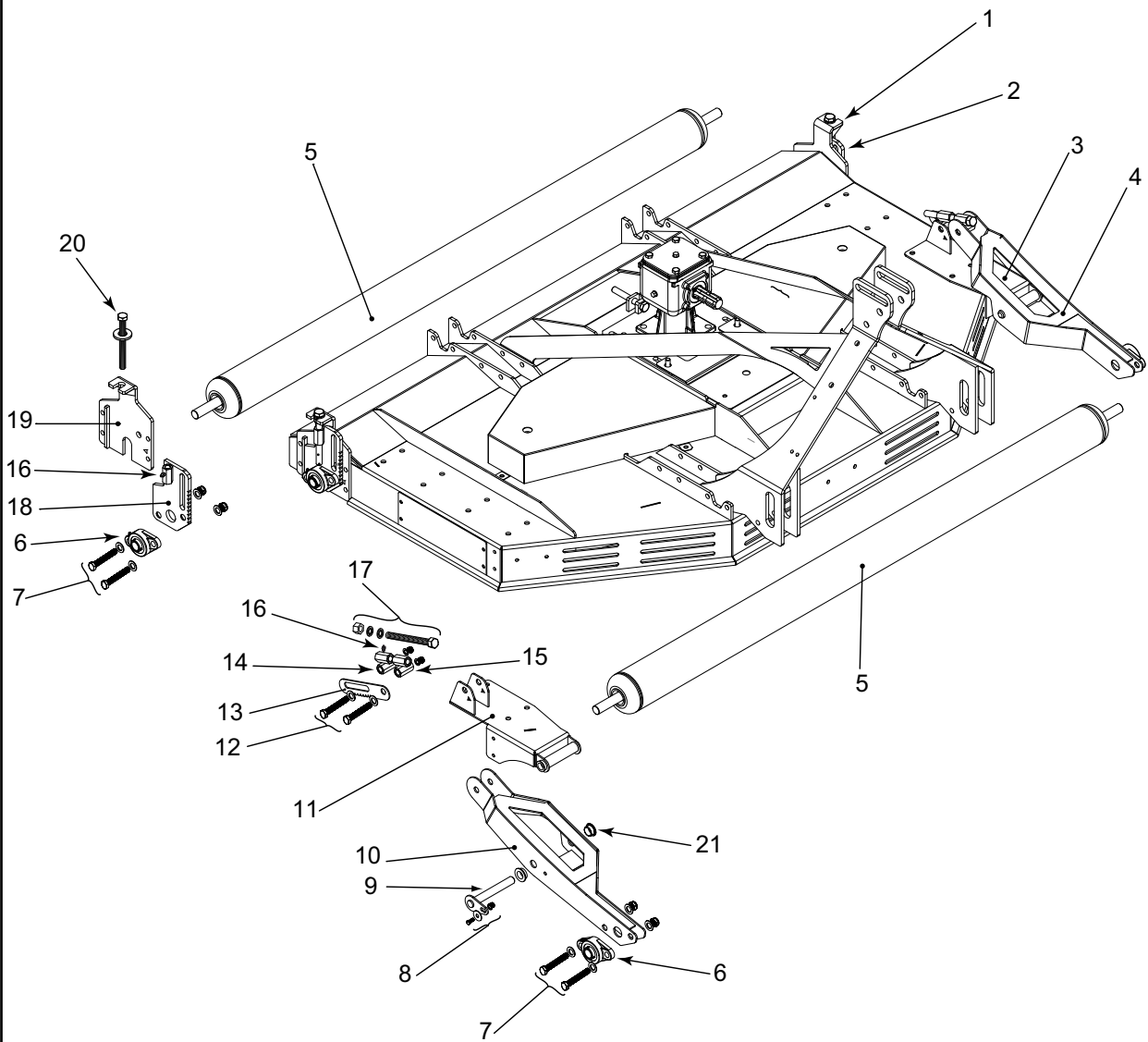


## PARTS LIST - CRX WHEEL ASSEMBLY

Item No.	CRX-410 Part No.	Description	QTY
1	WX-0627	Linch Pin	4
2	WX-18051	12.5mm Spacer	16
3	WX-17851	25mm Spacer	20
4	WX-1550	Wheel Fork	4
5	WX-4652	Wheel	4
6	WX-16103	Wheel Fastening Set	4
7	WX-31880	Bush	8
8	WX-17251	Rear Wheel Arm	2
9	WX-3503	Fastening Set (4 Bolts)	4
10	WX-17051	Front Wheel Arm	2
N/S	WX-14278	Trailing Skirt	1
N/S	WX-15258	Angled Skirt Bracket	1
N/S	WX-34876	Skirt Clamp Bracket	2

# PARTS ILLUSTRATION - CRX ROLLERS

## PLATE 3



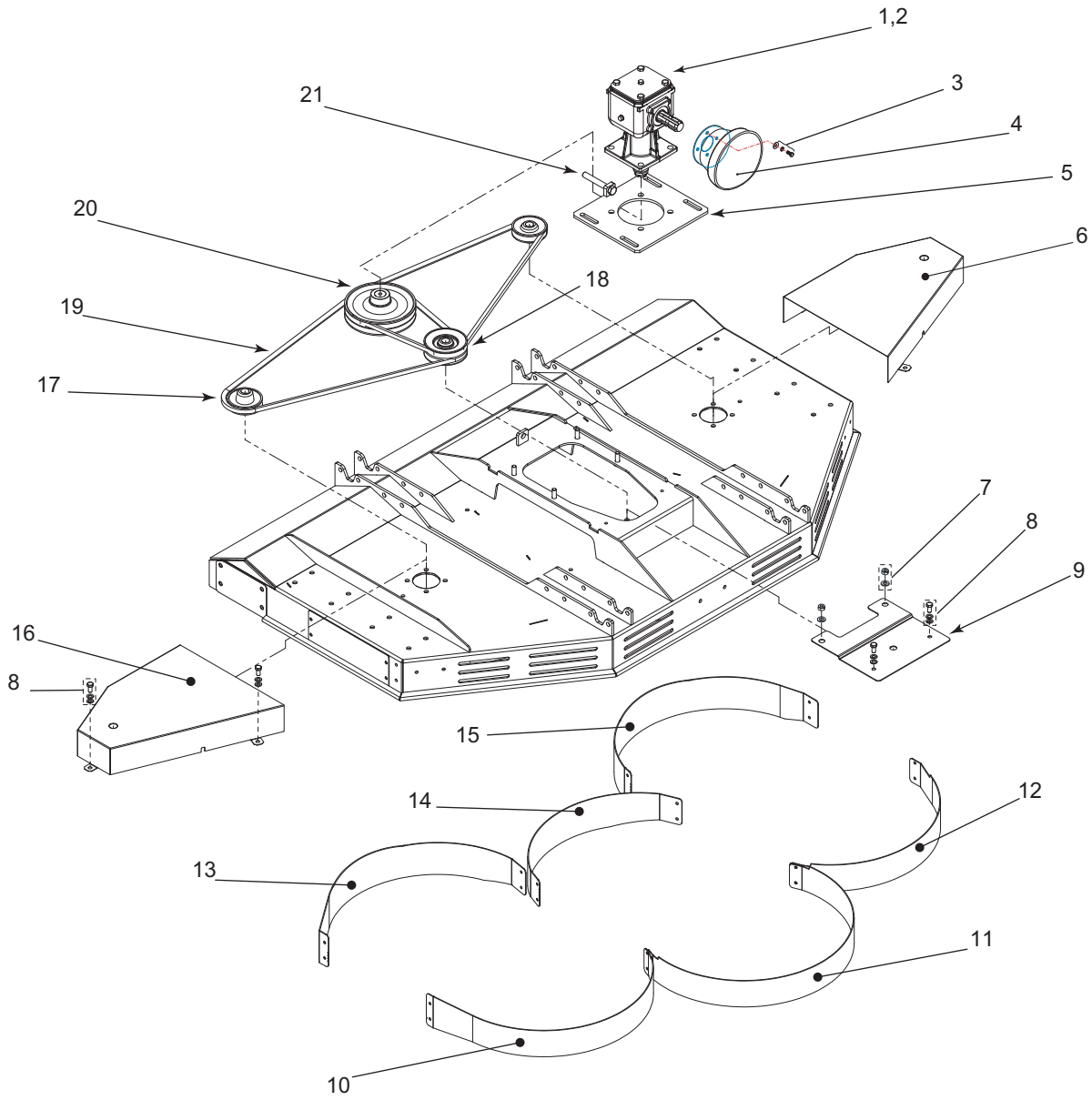


## PARTS LIST - CRX ROLLERS

Item No.	CRX-410 Part No.	Description	QTY
1	WX-8055	Rear Roller Fixed Plate - Left Hand	1
2	WX-8155	Rear Roller Sliding Plate - Left Hand	1
3	WX-10555	Front Roller Base - Left Hand	1
4	WX-8355	Front Roller Arm - Left Hand	1
5	WX-10155	Roller	2
6	WX-0541	Bearing Unit	4
7	WX-6501	Bearing Fastening Set	4
8	WX-1003	Front Roller Pin Fastening Set	2
9	WX-10628	Front Roller Pin	2
10	WX-8455	Front Roller Arm - Right Hand	1
11	WX-10655	Front Roller Base - Right Hand	1
12	WX-16703	Front Roller Guage Fastening Set	2
13	WX-8655	Front Roller Guage	2
14	WX-8555	Front Roller Adjuster Nut	2
15	WX-10955	Front Roller Adjuster Nut No Thread	2
16	WX-0246	Grease Nipple	4
17	WX-16803	CRX Front Roller Adjuster Bolt	2
18	WX-7755	Rear Roller Sliding Plate - Right Hand	1
19	WX-7655	Rear Roller Fixed Plate - Right Hand	1
20	WX-16603	CRX Rear Roller Adjuster Bolt	2
21	WX-10028	Bush	4

# PARTS ILLUSTRATION - CRX DRIVE AND BAFFLES

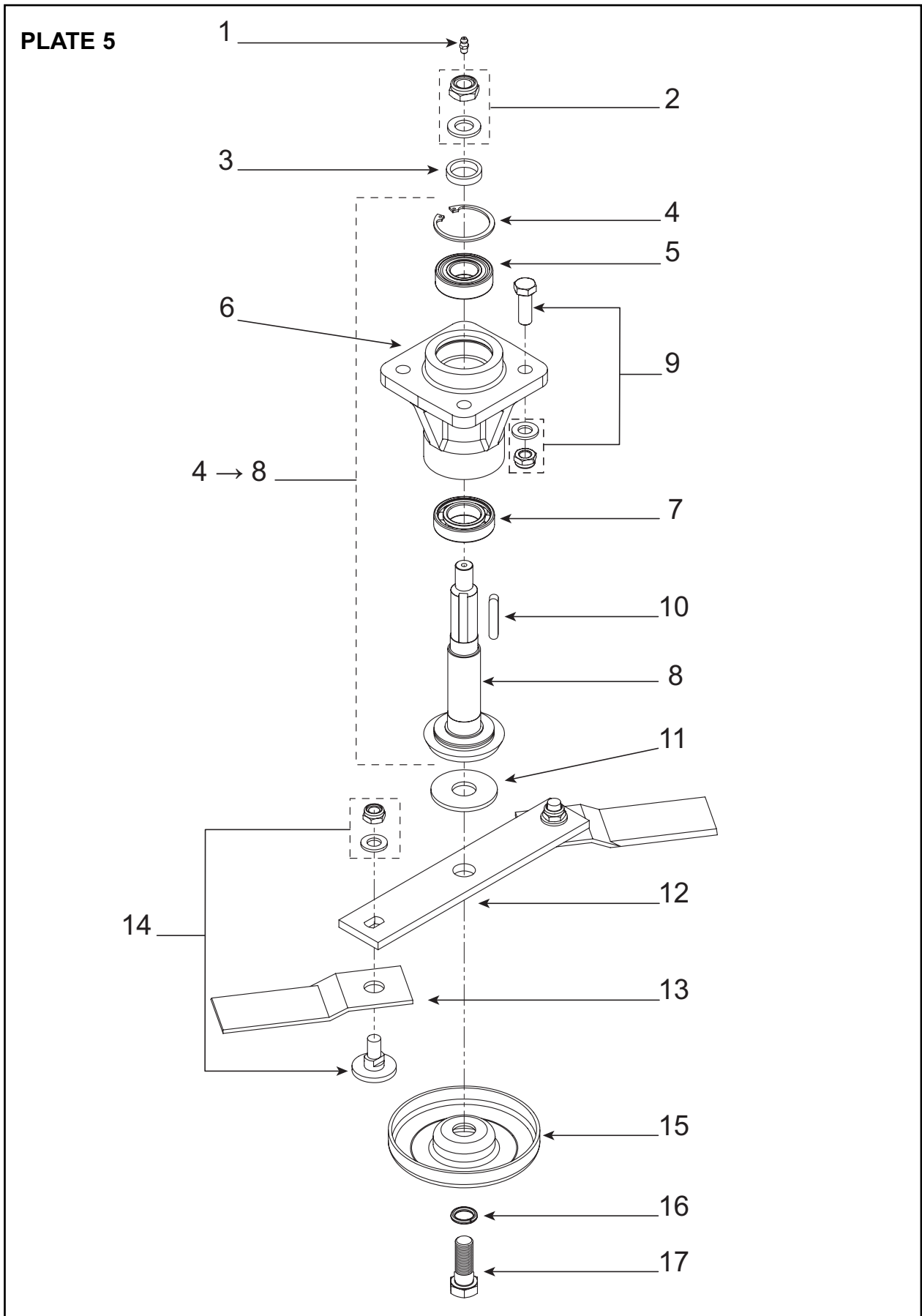
## PLATE 4



## PARTS LIST - CRX DRIVE AND BAFFLES

Item No.	CRX-410 Part No.	Description	QTY
1	WX-5257	Gearbox CR/CRX	1
2	WX-0547	Key	1
3	WX-5103	Fastening Set	1
4	WX-5177	Bucket Guard	1
5	WX-27976	Gearbox Adjuster Plate	1
6	WX-18777	Belt Guard - Left Hand	1
7	WX-4603	Fastening Set	2
8	WX-16503	Fastening Set	8
9	WX-18877	Gearbox Bracket Cover	1
10	WX-33176	Rear Discharge - Baffle 1	1
11	WX-33276	Rear Discharge - Baffle 2	1
12	WX-33376	Rear Discharge - Baffle 3	1
13	WX-32876	Side Discharge - Baffle 1	1
14	WX-32976	Side Discharge - Baffle 2	1
15	WX-33076	Side Discharge - Baffle 3	1
16	WX-18677	Belt Guard - Right Hand	1
17	WX-4262	Single Row Pulley	2
18	WX-4362	Double Pulley	1
19	WX-2434	Drive Belt	2
20	WX-3962	Gearbox Pulley CR/CRX	1
21	WX-1257	Adjuster	1

**PARTS ILLUSTRATION - CRX SPINDLE & BLADE ASSEMBLY**

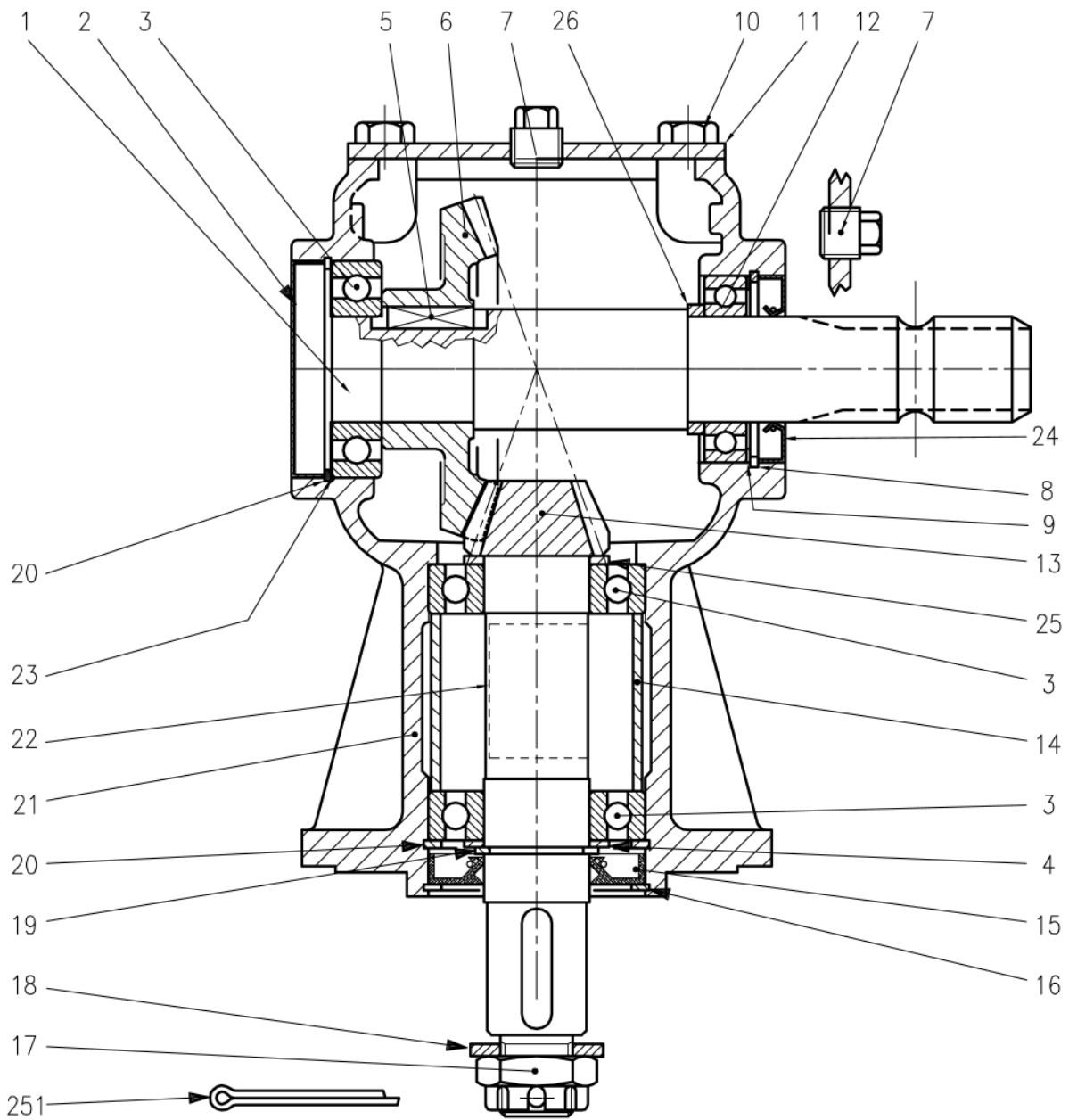


## PARTS LIST - CRX SPINDLE & BLADE ASSEMBLY

Item No.	CRX150 Part No.	Description	QTY
1	WX-0246	Grease Nipple	1
2	WX-5303	Pulley Fastening Set	1
3	WX-18166	Pulley Spacer	1
4	WX-1722	Circlip	1
5	WX-0838	Bearing	1
6	WX-5966	Spindle Bearing Housing	1
7	WX-0938	Bearing	1
8	WX-6066	Cutter Spindle	1
4-8	WX-5966B	Spindle Assembly	1
9	WX-3503	Housing Fastening Set	1
10	WX-0147	Key	1
11	WX-0220	Fibre Washer	1
12	WX-11170	Blade Bar	1
13	WX-9070	Blade Tip	2
14	WX-1739	Blade Bolt	2
15	WX-4370	Anti-Scalp Boss	1
16	WX-3525	Disc Spring	1
17	WX-2339	Blade Bar Bolt	1

PARTS ILLUSTRATION - CRX DECK GEARBOX - PART No. WX-5257

PLATE 6

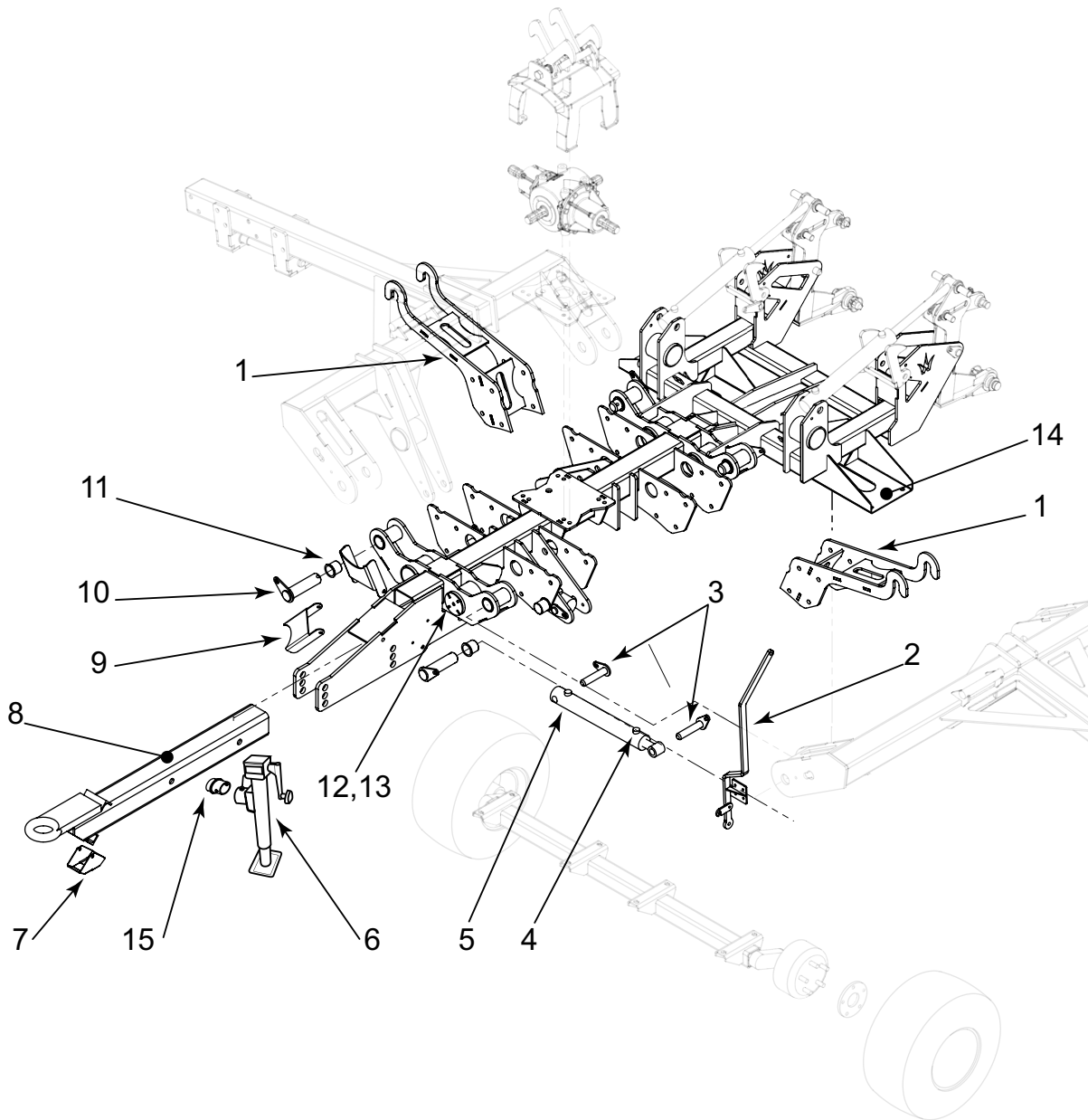


**PARTS LIST - CRX DECK GEARBOX PART No. WX-5257**

<b>Item No.</b>	<b>Part No.</b>	<b>Description</b>	<b>QTY</b>
1	GXS-0.141.2100.00	Input Shaft	1
2	GXS-8.7.0.00744	Oil Cap	1
3	GXS-8.0.1.00870	Bearing	3
4	GXS-0.259.7500.00	Shim Kit	1
5	GXS-8.4.1.00993	Key	1
6	GXS-0.133.5000.00	Crown Gear Z34	1
7	GXS-8.6.5.00006	Plug	2
8	GXS-8.5.2.00648	Snap Ring	1
9	GXS-0.113.7500.00	Shim Kit	1
10	GXS-8.1.1.00054	Bolt	4
11	GXS-0.205.1300.00	Cover	1
12	GXS-8.0.1.00000	Ball Bearing	1
13	GXS-0.141.6002.00	Output Shaft	1
14	GXS-0.141.7100.00	Spacer	1
15	GXS-8.7.1.00152	Double Lip Seal	1
16	GXS-8.5.3.00915	Snap Ring	1
17	GXS-8.2.2.01144	Castle Nut	1
18	GXS-8.3.2.00409	Flat Washer	1
19	GXS-8.5.1.00005	Snap Ring (For Shaft)	1
20	GXS-8.5.2.00131	Snap Ring (For Holes)	2
21	GXS-0.211.0300.00	Casing	1
22	GXS-0.124.7135.00	Plate	1
23	GXS-0.248.7500.00	Shim Kit	1
24	GXS-8.7.3.01259	Oil Seal	1
25	GXS-0.259.7500.00	Shim Kit	1
26	GXS-0.211.7100.00	Spacer	1

# PARTS ILLUSTRATION - CRX TRI-DECK CHASSIS

## PLATE 7



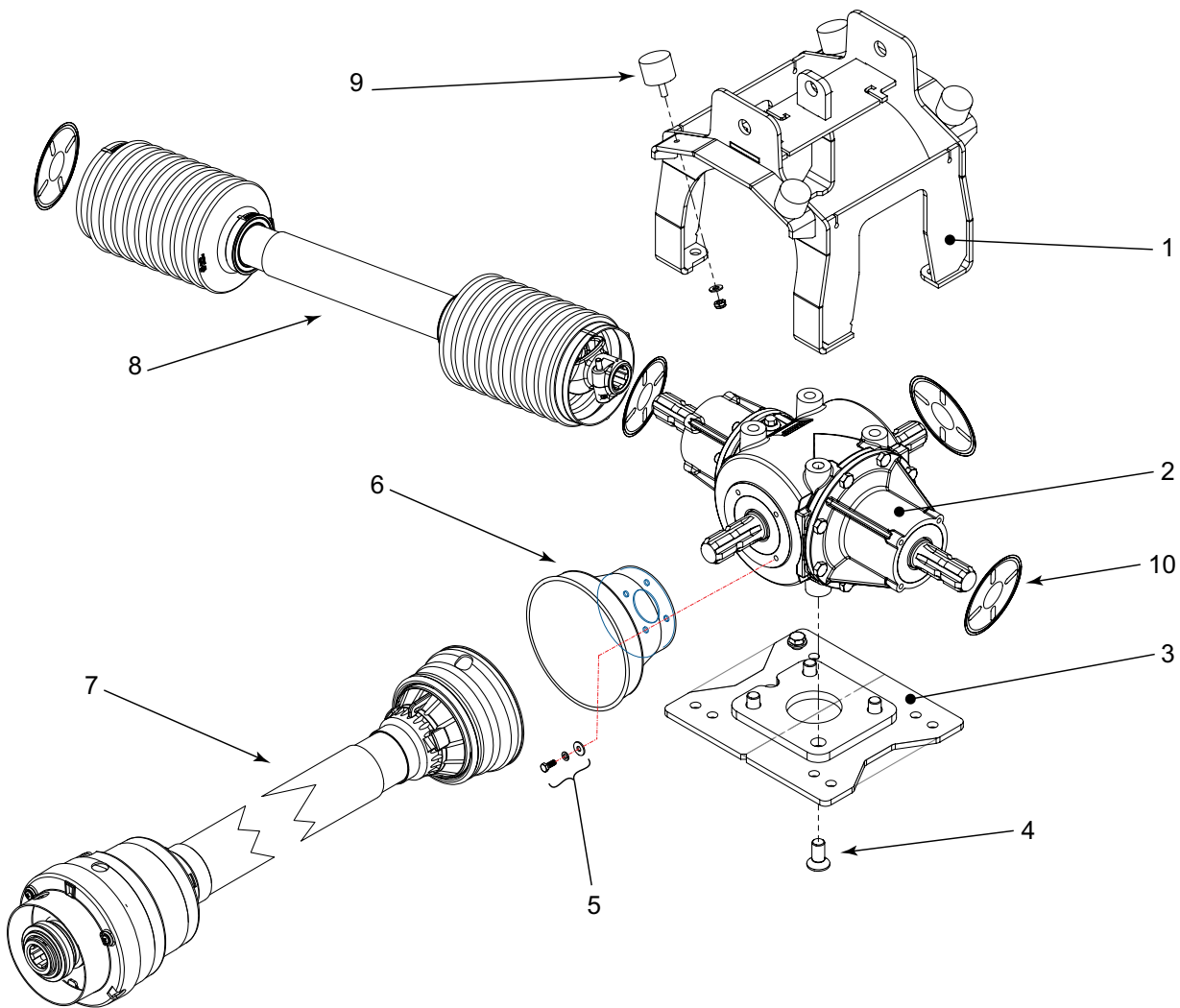


## PARTS LIST - CRX TRI-DECK CHASSIS

Item No.	Part No.	Description	QTY
1	WX-35780	Deck Latch Hook	2
2	WX-35380	Cable Pull Lever	1
3	WX-11828	Hydraulic Ram Pin	4
4	WX-12257	Breather Plug	4
5	WX-1854	Single Acting Ram	4
6	WX-20456	Jack	1
7	WX-38880	Skid	1
8	WX-35280	Drawbar	1
9	WX-24180	PTO Shaft Stand	1
10	WX-9028	Wing Ram Pin	4
11	WX-9038	Bush	8
12	WX-34976	Pull Plate Front	1
13	WX-35076	Pull Plate Rear	1
14	WX-21479	Tri-Deck Chassis	1
15	WX-20456	Jack Transport Mount	1
N/S	WX-20156	Hose Kit	1

# PARTS ILLUSTRATION - CRX CENTRAL GEARBOX

## PLATE 8



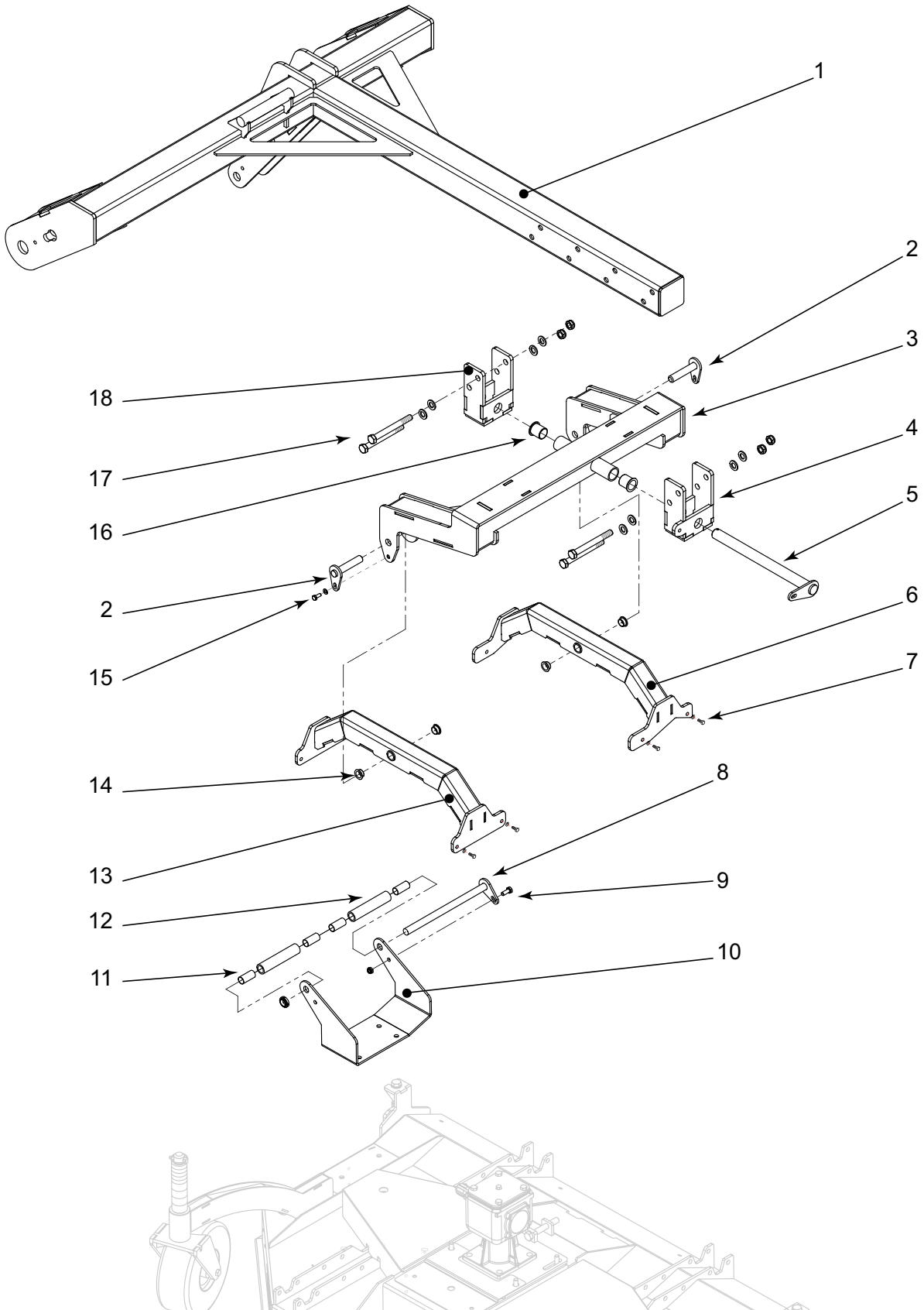
## PARTS LIST - CRX CENTRAL GEARBOX

---

Item No.	Part No.	Description	QTY
1	WX-35180	Saddle	1
2	WX-15357	4 Way Gearbox	1
3	WX-15457	Gearbox Plate	1
4	F-XCS1635	Countersunk Bolt	4
5	WX-5103	Bucket Guard Fastening Set	1
6	WX-5177	Bucket Guard	1
7	WX-8281	Wide Angle PTO Shaft	1
8	WX-8181	Wing PTO Shaft	2
9	WX-39080	Rubber Buffer	4
10	WX-8481	Adapter For PTO Cover	5
Not Shown	WX-8381	Rear PTO Shaft	1

# PARTS ILLUSTRATION - CRX WING MOUNTS

## PLATE 9

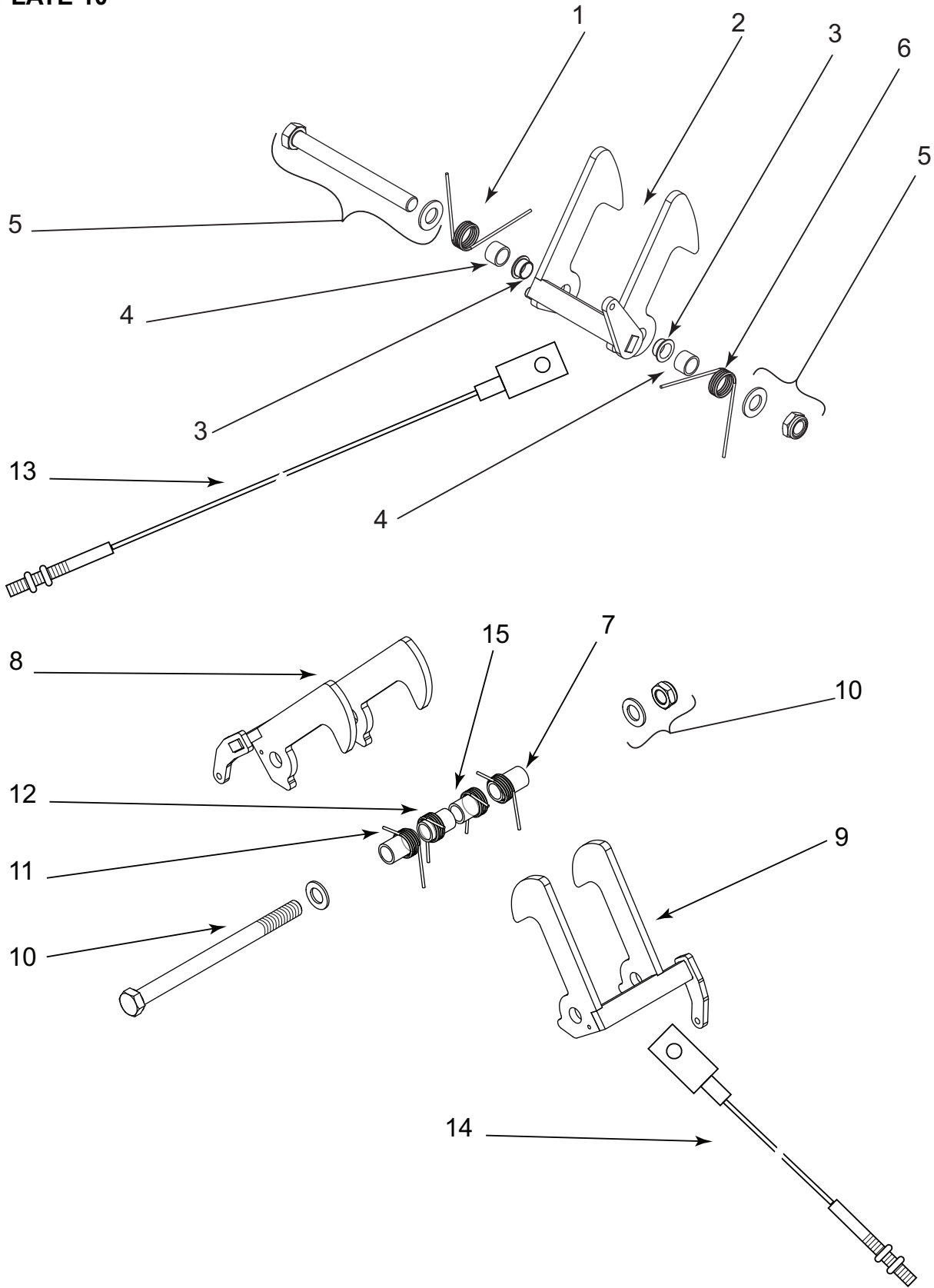


## PARTS LIST - CRX WING MOUNTS

Item No.	Part No.	Description	QTY
1	WX-21579	Wing Arm - Left Hand	1
1	WX-21679	Wing Arm - Right Hand	1
2	WX-11528	Lower Gimbal Pin	4
3	WX-36080	Wing Gimbal Arm - Left Hand	1
3	WX-36180	Wing Gimbal Arm - Right Hand	1
4	WX-35980	Wing Gimbal Bracket With Tab	2
5	WX-11428	Gimbal To Wing Pin	2
6	WX-36380	Lower Gimbal Bracket - Rear	2
7	WX-35003	Fastening Set	8
8	WX-21428	Deck Guide Roller Pin	2
9	WX-25003	Fastening Set	2
10	WX-11055	Guide Roller Bracket - Left Hand	1
10	WX-11155	Guide Roller Bracket - Right Hand	1
11	WX-12528	Guide Roller Bush	8
12	WX-12628	Guide Roller Tube	4
13	WX-36280	Lower Gimbal Bracket - Front	2
14	WX-10028	Rear Deck Latch Bush	8
15	WX-30003	Fastening Set	4
16	WX-8738	Bush 30 x 34	4
17	F-XBM16150	Bolt	8
18	WX-35880	Wing Gimbal Bracket	2

# PARTS ILLUSTRATION - CRX DECK LATCHES

## PLATE 10

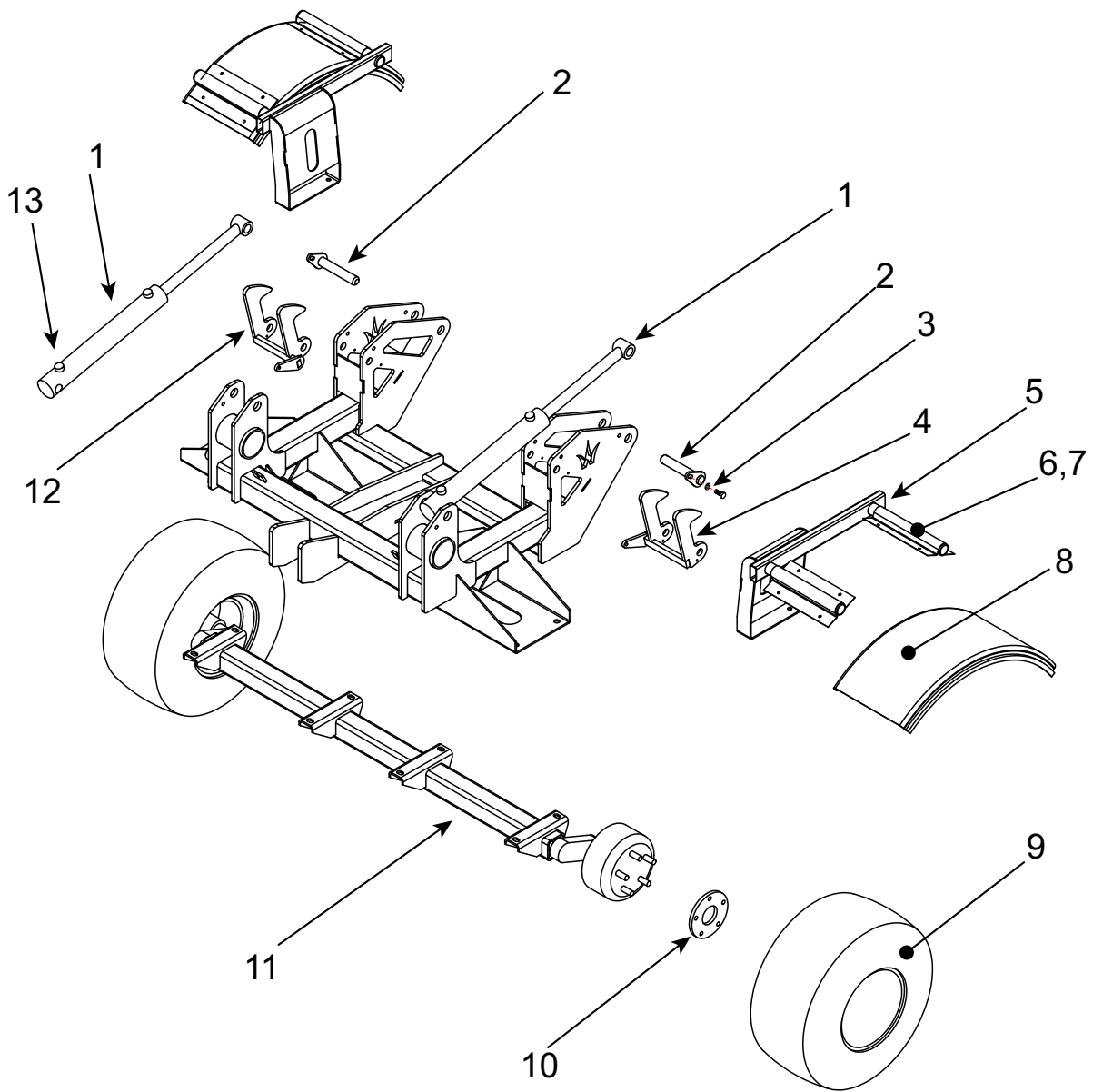


## PARTS LIST - CRX DECK LATCHES

Item No.	Part No.	Description	QTY
1	WX-6125	Torsion Spring (Rear Deck) Left Hand	2
2	WX-32980	Rear Deck Latch - Left Hand	1
2	WX-33080	Rear Deck Latch - Right Hand	1
3	WX-10028	Bush - Rear Deck Latch	4
4	WX-33180	Sleeve - Rear Deck Latch	4
5	WX-17403	Rear Deck Latch - Fastening Set	2
6	WX-6025	Torsion Spring (Rear Deck) - Right Hand	2
7	WX-38780	Side Deck Catch Tube	2
8	WX-35680	Side Deck Latch - Right Hand	1
9	WX-35480	Side Deck Latch - Left Hand	1
10	WX-18003	Side Deck Latch Fastening Set	1
11	WX-6425	Torsion Spring (Side Deck) Right Hand	2
12	WX-6325	Torsion Spring (Side Deck) Left Hand	2
13	WX-8330	Rear Latch Cable - Right Hand	1
13	WX-8530	Rear Latch Cable - Left Hand	1
14	WX-8430	Side Latch Cable - Right Hand	1
14	WX-8630	Side Latch Cable - Left Hand	1
15	WX-36480	Side Deck Latch - Central Spacer	2

PARTS ILLUSTRATION - CRX REAR CHASSIS

PLATE 11



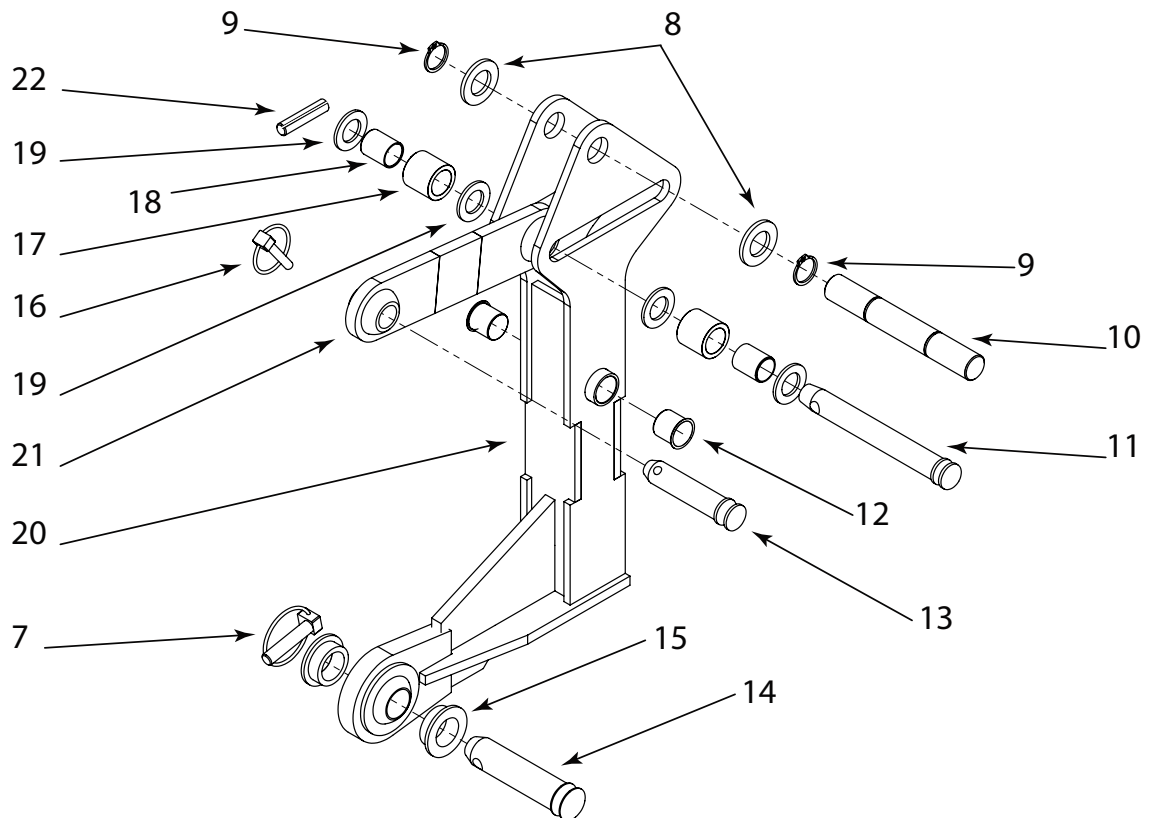
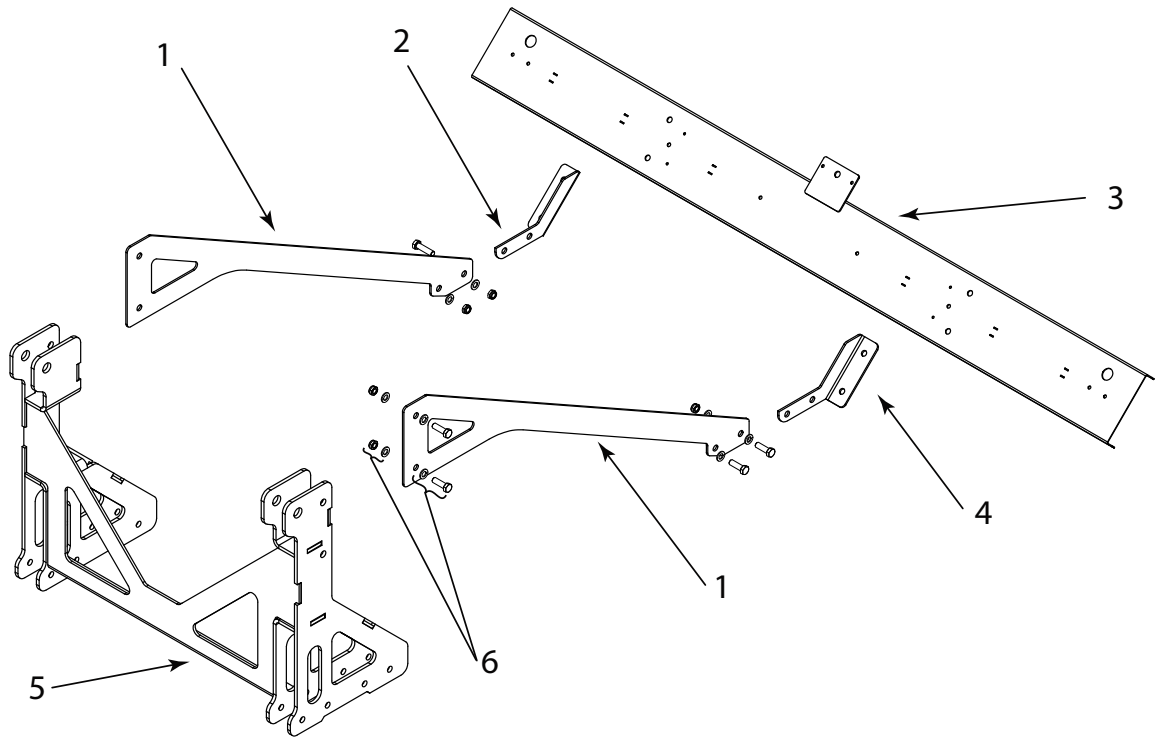


## PARTS LIST - CRX REAR CHASSIS

Item No.	Part No.	Description	QTY
1	WX-1854	Ram	2
2	WX-8028	Bearing Pin - Rear Mower Linkage	2
3	WX-17203	Bearing Pin - Fastening Set	2
4	WX-32980	Rear Deck Latch - Left Hand	1
5	WX-39380	Mudguard Bracket - Left Hand	1
5	WX-39480	Mudguard Bracket - Right Hand	1
6	WX-11158	Mudguard Stay Bracket	4
7	WX-30401	Stay Bracket Fastening Set	2
8	WX-39580	Mudguard	2
9	WX-6752	Wheel & Tyre Assembly	2
10	WX-18351	Wheel Hub Spacer	2
11	WX-18251	Tri-Deck Axle	1
12	WX-33080	Rear Deck Latch - Right Hand	1
13	WX-12257	Breather Plug	4

# PARTS ILLUSTRATION - CRX REAR DECK MOUNT AND LIGHTBOARD

## PLATE 12



## PARTS LIST - CRX REAR DECK MOUNT AND LIGHTBOARD

Item No.	Part No.	Description	QTY
1	WX-21879	Rear A Frame Brace	2
2	WX-36976	Light Bar Bracket - Right Hand	1
3	WX-17676	Light Bar	1
4	WX-37076	Light Bar Bracket - Left Hand	1
5	WX-21779	Rear A Frame	1
6	WX-3503	Fastening Set	2
7	WX-0127	Roll Pin	2
8	F-XWF24	Flat Washer	2
9	WX-5722	External Circlip	4
10	WX-8328	Rear Deck Ram Pin	2
11	WX-5822	Rear Deck Linkage Pin	2
12	WX-8938	Bush	4
13	WX-2126	Top Link Pin	2
14	WX-2226	Lower Link Pin	2
15	WX-3828	Bottom Link Bush	4
16	WX-0627	Linch Pin	2
17	SCA-5532706	Spacer 32mm	4
18	WX-11328	Rear Deck Linkage Sleeve	4
19	F-XWF22	Flat Washer	4
20	WX-13979	Leg	2
21	WX-24780	Linkage - Rear Upper	2
22	WX-6022	Roll Pin	2

## PTO SHAFT OPERATION AND MAINTENANCE

---

### IMPORTANT!

**P.T.O. drive shafts must only be used for their intended purpose.**

P.T.O. drive shafts are designed for specific machine types and power requirements. They must not be replaced by other models. Ensure that the P.T.O. drive shaft is securely connected.

**Only use a completely protected drive system:**

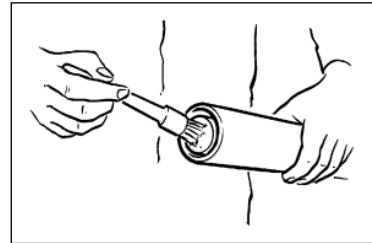
P.T.O. drive shaft with complete guard and complementary guard on tractor and implement. A complete guard is essential in all working positions.

## LUBRICATION

---

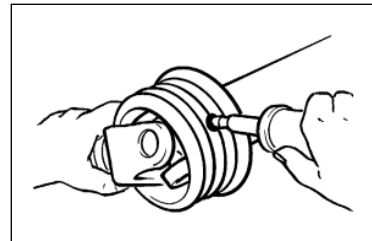
Lubricate with quality grease before starting work and every 40 operating hours.

Ensure the P.T.O. guard bearings are lubricated, the end ball shaped covers need retracting to expose all grease nipples.



Clean and grease the P.T.O. drive shaft before each prolonged period of non-use.

Grease the guard tubes in winter to prevent freezing.



## COUPLING THE P.T.O. SHAFT

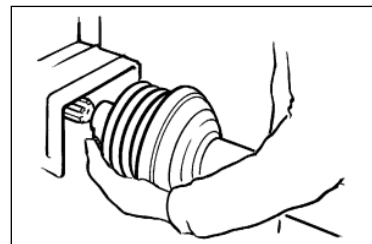
---

Stop the tractor engine and remove the starting key.

Clean and grease the P.T.O. and PIN

### **Q.-d pin**

Press q.-d. pin and simultaneously push P.T.O. drive shaft onto P.T.O. until pin engages.



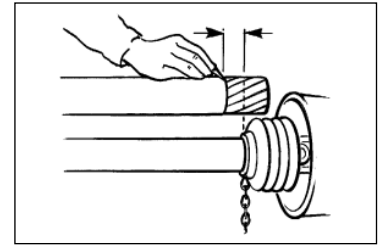
# PTO SHAFT OPERATION AND MAINTENANCE

---

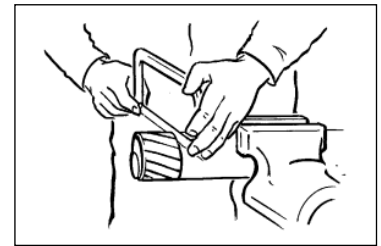
## LENGTH ADJUSTMENT

---

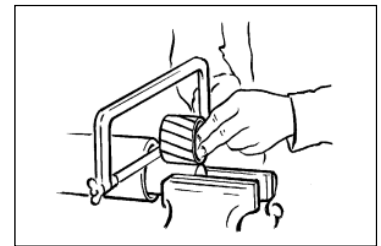
To adjust the length, hold the half-shafts next to each other in the shortest working position and mark them.



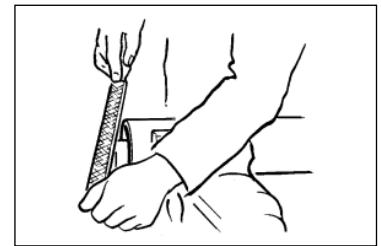
Shorten inner and outer guard tubes equally.



Shorten inner and outer sliding profiles by the same length as the guard tubes.



Round off all sharp edges and remove burrs.  
Grease sliding profiles.

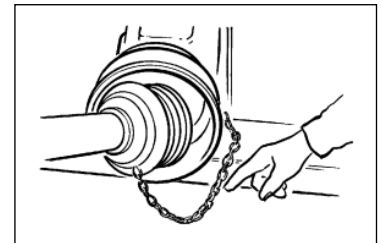


No other changes may be made to the P.T.O. drive shaft and guard.

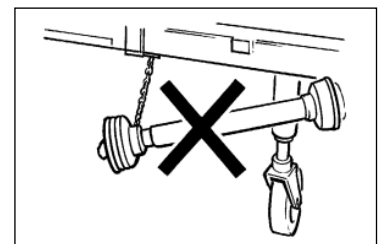
## CHAINS

---

Chains must be fitted so as to allow sufficient articulation of the shaft in all working positions.



Do not let the chains encircle the P.T.O. guard in use as this will shorten the life of the P.T.O. guard.



The PTO drive shaft must not be suspended from the chains! Please use the P.T.O. Support Hook provided.



**DAILY INSPECTION RECORD**

OPERATOR'S NAME	DATE OF INSPECTION	HOURS	
			Spindle Rotor, remove tangled objects
			Inspect condition of Blades
			All bolts and nuts, re-tighten if req'd.
			Grease Rotor Bearings
			Grease Roller Bearings
			Check Gearbox Oil Level
			Inspect Roller Scraper Wire
			Inspect condition of Belts
			Inspect tension of Belts

## NOTES

---





## *Certificate of CE Conformity*

Machine Model:

CRX-410

Description:

MULTICUT MOWER

*I hereby certify that the machine detailed hereon  
conforms to:*

**European Directives 2008/42/EC  
Supply of Machinery Regulations 2008  
As amended 91/368EEC – 93/44EEC – 93/68EEC  
HSE AIS 33**

Signed:

A handwritten signature in black ink, appearing to be 'RAN', written over a dotted line.

Quality Manager

Date:

MARCH 2016

### **Wessex International**

Charlton House, Caxton Place, East Portway Industrial Estate, Andover, Hampshire SP10 3QN  
Telephone: 01264 345870 Fax: 01264 345 880

[www.wessexintl.com](http://www.wessexintl.com)



**Wessex International**  
**Charlton House, Caxton Close, East Portway Industrial Estate, Andover Hampshire. SP10 3QN**  
**Telephone: 01264 345870 Fax 01264 345880**  
**e-mail: [sales@wessexintl.com](mailto:sales@wessexintl.com)**

**[www.wessexintl.com](http://www.wessexintl.com)**



## WESSEX PROLINE RMX, CRX & FRX INSTALLATION RECORD

Upon installation of this machine, it is the Dealers responsibility to fill out the Installation Record below and return to Wessex International either by Fax to 01264 345880 or Email warranty@wessexintl.com.

IF THIS FORM IS NOT RETURNED, WE CANNOT ISSUE THE CUSTOMER THE APPLICATION FORM TO REGISTER FOR THE EXTENDED WARRANTY ON THEIR MACHINE.

### END USER DETAILS

NAME : \_\_\_\_\_

ORGANISATION : \_\_\_\_\_

ADDRESS : \_\_\_\_\_  
 \_\_\_\_\_  
 \_\_\_\_\_

TELEPHONE : \_\_\_\_\_ MOBILE : \_\_\_\_\_

EMAIL : \_\_\_\_\_

DEALER: \_\_\_\_\_ BRANCH : \_\_\_\_\_

MACHINE MODEL : \_\_\_\_\_ SERIAL NO: \_\_\_\_\_

INSTALLATION DATE : \_\_\_\_\_

THE MACHINE DETAILED ABOVE HAS BEEN CORRECTLY INSTALLED AND THE FOLLOWING POINTS HAVE BEEN DISCUSSED WITH THE CUSTOMER :

- |  |                          |
|--|--------------------------|
| 1 Correct Machine Operation  | <input type="checkbox"/> |
| 2 Operational Health & Safety  | <input type="checkbox"/> |
| 3 Machine Setting and Adjustments  | <input type="checkbox"/> |
| 4 Maintenance  | <input type="checkbox"/> |
| 5 Importance of tensioning belts after initial 2 - 3 hours work and routinely thereafter | <input type="checkbox"/> |

### Delivery Checklist

- |  |                          |
|--|--------------------------|
| Oil in gearboxes   | <input type="checkbox"/> |
| All PTO Shafts properly attached with Safety Chains attached | <input type="checkbox"/> |
| All PTO Shafts greased                                       | <input type="checkbox"/> |
| All shields, guards and deflectors in place                  | <input type="checkbox"/> |
| Check wheel nuts are tight                                   | <input type="checkbox"/> |
| All fixings tight  | <input type="checkbox"/> |

Inspected by : \_\_\_\_\_

### **IMPORTANT INFORMATION TO PREVENT DAMAGE - RELEVANT TO ALL TRAILED MACHINES**

Ensure that the tractor link arms are removed or at least dropped to prevent contact with the PTO shaft when turning. Avoid sharp turns where the rear wheel of the tractor comes into contact with the drawbar or PTO shaft. Turning too sharp can also cause damage to the PTO shaft, it's universal joints and tractor tyres.

DEALER SIGNATURE : \_\_\_\_\_ NAME : \_\_\_\_\_

DATE : \_\_\_\_\_

Upon receipt of this form, we will forward the Extended Warranty Application Form to the End User.

**THANK YOU FOR FACILITATING THE SALE OF ANOTHER WESSEX PROLINE MACHINE!**

WESSEX INTERNATIONAL

Charlton House, Caxton Close, East Portway Industrial Estate, Andover, Hampshire SP10 3QN

T : 01264 345870 F : 01264 345880 E : sales@wessexintl.com