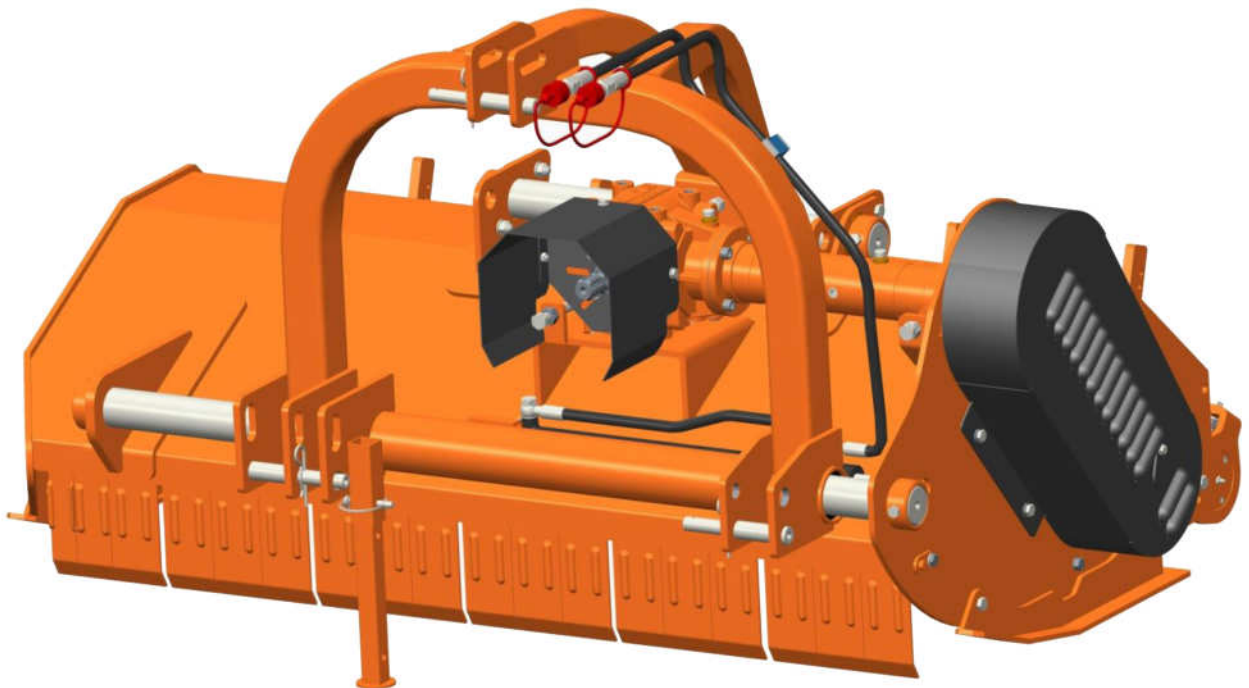




Operation Manual and Parts Book

WFM 200 HD - WFM 225 HD



Product Code: L2057



Issue June 2016

CONTENTS

Welcome to your new Wessex Product	3
Safety Decals	4, 5
Important Safety Warnings	6
Warranty	7
Description of the Machine	8
Technical Data	9
Main Components	10
Permitted Uses	11, 12
Setting up your Machine	13, 14
Operating Instruction / Working Speed / Adjusting the Cutting Height	15
Alignment of Equipment in the Field / Laterall Offset	16
Service and Maintenance	17
Replacing and Adjusting the Belt	18
Flail Replacement	19
Belt Replacement	20
Rakes Adjustment	21
Troubleshooting	22
Parts Illustration / Parts List - 'A' Frame Assembly	24
Parts Illustration / Parts List - Front Guards and Side Skid Assemblies	25
Parts Illustration - Rotor Assembly	26
Parts List - Rotor Assembly	27
Parts Illustration - Rotor Assembly with Frame	28
Parts List - Rotor Assembly with Frame	29
Parts Illustration - Roller Assembly	30
Parts List - Roller Assembly	31
Parts Illustration - Roller and Rake Assembly with Frame	32
Parts List - Roller and Rake Assembly with Frame	33

CONTENTS

Parts Illustration - Drive Assembly34
Parts List - Drive Assembly35
Parts Illustration - Hydraulic Side Shift Assembly36
Parts List - Hydraulic Side Shift Assembly37
Parts Illustration - Gearbox Assembly38
Parts List - Gearbox Assembly39
Parts Illustration - Gearbox and Locking Plate Assembly40
Parts List - Gearbox and Locking Plate Assembly41
P.T.O. Shaft - Operation and Maintenance42, 43
Safety Training Induction44
Daily Inspection Record45
CE Certificate46

WELCOME TO YOUR NEW WESSEX PRODUCT

Thank you for purchasing a Wessex product. As a Wessex customer, you now number among the most important people of our business and we will endeavour to give you the best service available through our dealer network.

Please read this Manual carefully and familiarise yourself and other persons that will be using the machine with its contents, to ensure the optimum performance and working life of your machine. It is advisable that a copy of this Manual is kept in the workshop and one copy with the machine. Further copies are available through your dealer.

On delivery, your dealer should go through the workings of the machine with you, explaining the setting up procedures, all of which are contained in this manual for further reference. The Warranty Registration Form must also be completed and returned to us **within 7 days of delivery** in order to validate the Warranty.

**PLEASE READ THE FOLLOWING PAGES CAREFULLY BEFORE USING YOUR MACHINE
AND KEEP THIS MANUAL IN A SAFE PLACE.**

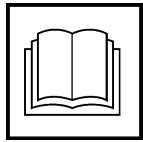


**THIS SAFETY SYMBOL IS TO ALERT OPERATORS OF A HAZARD
THAT MAY RESULT IN INJURY.
ALWAYS FOLLOW INSTRUCTIONS CAREFULLY**

SAFETY DECALS



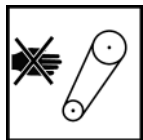
- GB **ATTENTION** Description of pictograms.
 F **ATTENTION** Description des pictogrammes.
 D **VORSICH** Beschreibung von Piktogrammen.



- GB Read Operating manual before use.
 F Lire le Manuel d'utilisation avant l'utilisation.
 D Vor Benutzung Betriebsanleitung lesen.



- GB Ear defenders must be worn.
 F Porter des protections d'oreilles.
 D Gehörschutz muss getragen werden.



- GB Never remove guards or attempt adjustment until rotor has stopped.
 F Ne jamais retirer les protections ni tenter des ajustements si les rotors sont en mouvement.
 D Niemals Schutzvorrichtungen abnehmen oder eine Einstellung versuchen, bevor der Rotor stillsteht.



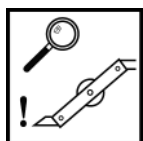
- GB Bystanders must be at least 20 metres from machine range of action.
 F Les personnes présentes doivent s'écarter d'au moins 20 mètres du rayon d'action de la machine.
 D Umstehende müssen mindestens 20 m vom Wirkungsbereich der Maschine entfernt sein.



- GB Stand clear. Flying objects possible.
 F S'éloigner ! Possibilité d'objets volants.
 D Zurückbleiben! Herumfliegende Objekte möglich.



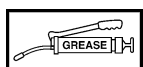
- GB Lift Machine before turning
 F Soulever la machine avant les virages.
 D Die Maschine vor dem Wenden anheben.



- GB Examine blades regularly. The operator is responsible for machine damage caused by unbalanced rotors.
 F Examiner les lames régulièrement. L'opérateur est responsable des dommages à la machine provoqués par des rotors mal équilibrés.
 D Die Messer regelmäßig untersuchen. Der Bediener ist für Maschinenschäden verantwortlich, die durch ungewichtige Spindeln entstehen.



- GB Keep hands and feet clear
 F Ne pas approcher les mains et les pieds.
 D Hände und Füße fernhalten.



- GB Grease points
 F Points de graissage.
 D Schmierpunkte.

SAFETY DECALS



- GB Lifting Point
F Point de levage
D Hebepunkt



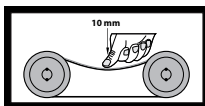
- GB Always lock all cutter decks in the up position when travelling on the highway.
F Toujours verrouiller les plateaux de coupe en position verticale lors du transport sur les routes.
D Beim Transport auf der Straße immer alle Mähdecks in der oberen Stellung verriegeln.



- GB Stand clear of lowering cutting decks.
F S'écarter des plateaux de coupe lorsqu'ils s'abaissent.
D Von Mähdecks, die abgesenkt werden, fernhalten.



- GB Caution, Pinch Points.
F Attention, points de pincement.
D Vorsicht, Einklemmgefahr.



- GB CORRECT BELT TENSION: Check belt tension regularly:
10mm of belt deflection at thumb pressure between pulleys.
F TENSIONNEMENT CORRECT DE LA COURROIE : Contrôler le tensionnement régulièrement :
la déflexion de la courroie sous la pression du pouce entre les deux poulies doit être de 10 mm.
D KORREKTE RIEMENSANNUNG: Riemenspannung regelmäßig überprüfen:
10 mm Eindrücktiefte bei Daumendruck zwischen Riemenscheiben.

IMPORTANT NOTICE

FITTING PTO SHAFT TO MACHINE & TRACTOR

- All safety chains must be anchored tight enough to allow a small amount of movement, but not enough to wrap around the P.T.O. Shaft.
- Ensure that the shaft **and guard** is regularly greased to avoid overheating and to give lubrication.
- **Important:** Thoroughly read through the manufacturers instruction book before using the P.T.O. Shaft.

P.T.O.Shafts are not covered by the Wessex Warranty.

IMPORTANT SAFETY WARNINGS



Wessex machines are guarded for your protection, but you must always observe certain elementary precautions. Machines are potentially **dangerous** and should be used with the greatest respect and **ALL OPERATORS MUST** read this manual and be aware of all safety precautions.

1. **NEVER** attempt any adjustment whatsoever, unless the machine is **COMPLETELY** at a standstill and the P.T.O. drive and blades have stopped turning.
2. **NEVER** attempt to clear any obstructions around the mower unless the machine is **COMPLETELY** at a standstill and the P.T.O. drive and blades have been stopped.
3. **NEVER** remove belt guards unless the machine is **COMPLETELY** at a standstill.
4. **NEVER** remove safety guards which are provided for your protection.
5. **NEVER** operate the mower with people around, keep everybody (especially children and animals) at a safe distance, **minimum 20 metres**.
6. Stand well back from the machine when cutters are spinning.
7. Regularly inspect the **BLADES AND FIXING BOLTS** to ensure that they are in excellent condition. Replace blades **IMMEDIATELY** if any signs of fracture or excess wear becomes apparent. Serious damage, which is excluded from our warranty conditions, may result from using your mower with an unbalanced rotor. When replacing blades, always fit new mounting bolts and nuts to ensure that the rotor is balanced and running smoothly.

HEALTH AND SAFETY - Noise at Work Regulations

READING AT THE OPERATORS EAR

Wessex RMX Roller mower: Approximately 95 D.B.A

Depending on conditions and material being cut, this reading may alter, it is therefore advisable for users to do their own assessment.



In compliance with the above regulations, Ear Protectors must be worn when operating machinery.

WARRANTY

Your Wessex product or equipment is warranted free from defect in workmanship or manufacture for one year from date of purchase. Any parts which appear to us to be defective, either in material or workmanship shall be replaced or repaired at no cost to the purchaser, subject to the following conditions:

1. The registration card enclosed with this booklet must be returned to us within seven days of purchase. Alternatively if you prefer, you may register your product via our Website.
<http://www.wessexintl.com/warranty-registration>
2. Any failure in the machine should be reported in the first instance immediately to your dealer, who will act on your behalf to resolve the matter to your satisfaction.
3. The defective parts will be returned by your dealer to us, accompanied by a full statement describing the failure and the circumstances and conditions in which the failure occurred.
4. The following are specifically excluded from our terms of warranty:
 - a) Fair wear and tear, especially to belts, brushes, blades and bearings.
 - b) Damage caused through incorrect adjustment (see instructions).
 - c) Damage caused by neglect or lack of lubrication.
 - d) Damage caused by misuse or abuse, including impact damage to blades.
 - e) Damage caused whilst the machine is in transit.
 - f) **Damage caused to the frame of the machine by running the machine with unbalanced rotors, blades or spinners.**
 - g) Damage caused to the machine by use with loose nuts, bolts, screws or any other type of fittings.
5. The warranty is for the benefit of the first user only.
6. Wessex International decisions will be final and binding.

Note:

It is recommended that every machine is inspected after one hour of operation to check that all nuts, bolts, screws or any other types of fixings are tight and any loose fixings or components should be rectified as appropriate.

Further inspections should be carried out at regular intervals thereafter.

DESCRIPTION OF THE MACHINE

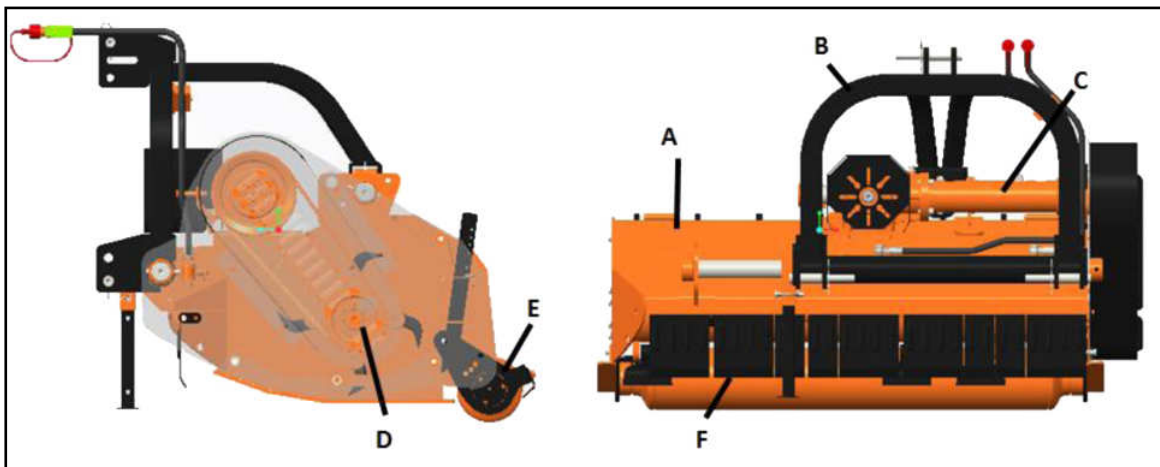
This type of equipment was designed and developed for utilization in the field of agricultural work, including for hashing end of the grass, branches orchards, vineyards, parks, etc.

While different jobs have not been not authorized in writing by the manufacturer, is prohibited and in this case the manufacturer is responsible for equipment damage.

Please refer technical data for the proper size of prime mover and hitch type

It is produced in several models to meet the different requirements, particularly with regards to the working width.

Legend



A- Chassis principle

B- Three points hitch (Hydraulic actuation)

C- Transmission group with internal free Wheel.

D- Carrying rotor blades.

E- Roller Support.

F- Protective Housing.

TECHNICAL DATA

SPECIFICATION		200	225
Overall size L x W x H	Cm (inch)	119.4 X 220.0 X 99.0(47 X 87 X 39)	119.4 X 245.0 X 99.0(47 X 96 X 39)
Working width	Cm (inch)	198.0(78)	223.0(88)
Recommended tractor HP	HP	50-100	50-100
3 Point Hitch Type		Cat I/II	Cat I/II
No. of blades	Nos	60	60
No. Of Hammer	Nos	20	20
PTO input speed	Rpm	540	540
Side transmission	Cm	4 Belt BX type	4 Belt BX type
Side shift (max)	Cm	43.7	46.7
Rotor diameter	Cm	17	17
Rotor swing diameter	Kg/lbs	41	41
Approx Weight		735(1620)	800(1763)

MAIN COMPONENTS

A – Chassis

B – Three Points hitch

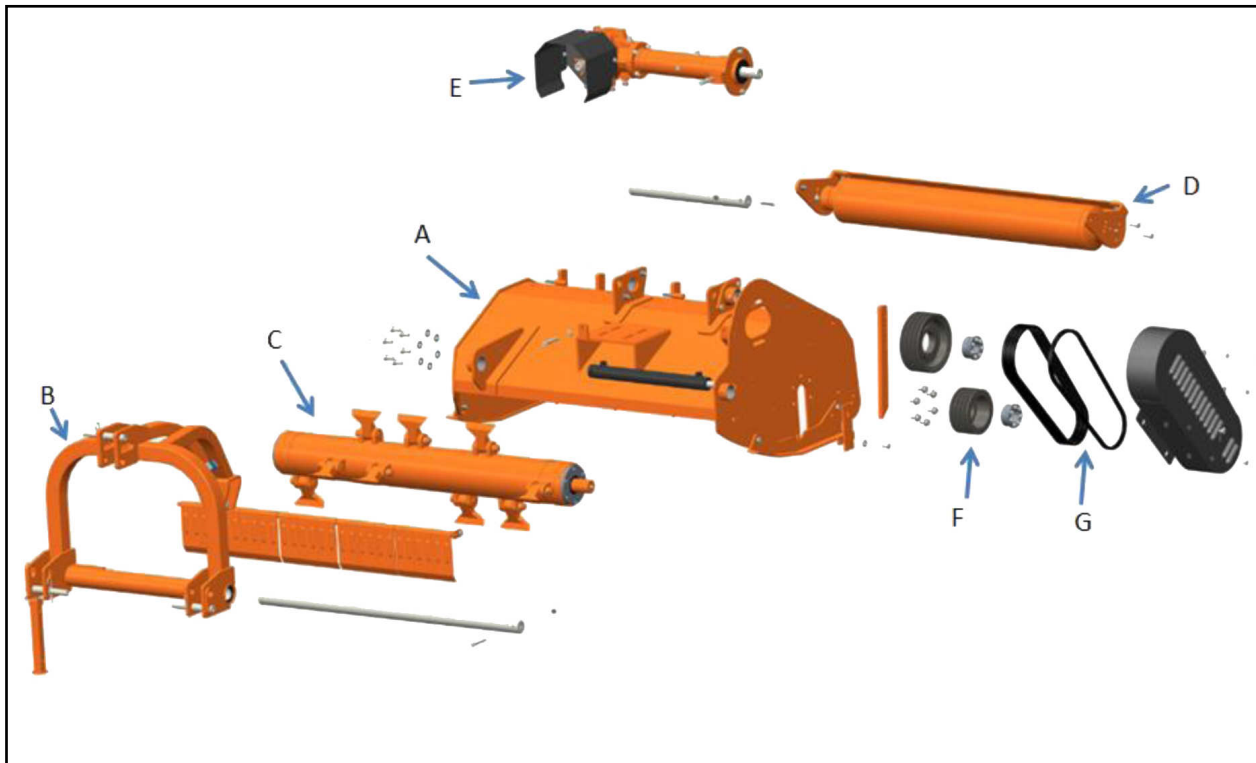
C – Rotor

D – Leveller

E - Transmission housing

F – pulleys

G – belts



PERMITTED USES

When employing the equipment, it is absolutely forbidden to:

- Hitch up the machine to power tractors or inadequate weight.
- Use the device if the axes, spacers and pins are not in place.
- Climb onto the machine during work or transport.
- Use the device without the basic settings described in this notice.

Note: The machine is delivered to you with settings that optimize transport and therefore cannot be used without having to perform any necessary adjustments.

ROAD TRAFFIC

For road traffic, meet national standards of the country concerned.

Hydraulic system: it is strictly forbidden to operate the unit, or in the deployed position.

SAFETY DURING WORK

Most accidents occur with machines functioning or during servicing or repairs are caused by failure to comply with basic standards security.

Always be alert to potential risks and pay attention to the effects caused by this that you are doing.

If we recognize situations
potentially
dangerous,
can prevent accidents.

QUALITY OF OPERATORS

The staff that employs and works with machines must be competent and have the following qualities:

Physical: Perfect view, coordination and ability to perform all the necessary operations in a manner.

Mental: Ability to understand and apply standards established rules and safety precautions. He must be attentive and have a good sense for his personal safety and that of others; it must make the desired work properly and responsibly.

Training: He must read the manual carefully, graphics and the attached drawings, instructions and adhesives warning. It must be specialized and qualified for employment as well as for maintenance.

WORK CLOTHES

During work, but especially in case of maintenance or repair, you should dress appropriately and always use protective personal devices.

- Avoid clothing with sleeves too broad and anything else that could cling with moving parts.
- Protective gloves for hands.
- Goggles or protective mask for eyes and face.
- Protective helmet for the head.

GENERAL SAFETY

Always consider the characteristics of the work area where it will operate:

- Whether to tackle the equipment on site, it is necessary to have a flat and stable area of sufficient size.
- During operation, it is forbidden to enter in the operating range of the machine or its accessories.
- Before performing any procedure, ensure stability of the device.

Preparation work:

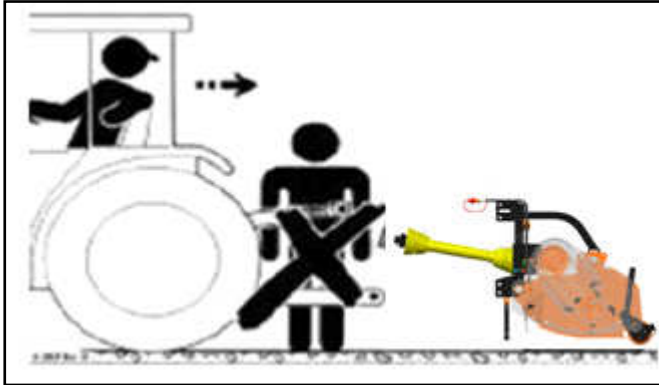
- Before and during work, it is prohibited to take alcoholic beverages, drugs or other substances that impair the ability to work.
- Check that the fuel is sufficient to avoid a sudden stop of the machine, especially during a critical manoeuvre.
- Lack of planned security conditions, do not use the machine. For example: it is prohibited to perform risky repairs to starting a job or work at night without sufficient lighting of the work area.

During work or maintenance, remember the following precautions:

- Respect scrupulously the instruction in this manual.
- The safety decals must never be removed or erased.
- Except when necessary for maintenance, never remove safety devices, covers or protection. If it must be removed, stop engine and operate with caution, then refit the devices before restarting the engine and the use the machine.
- It is forbidden to lubricate, clean and adjust moving parts.
- It is forbidden to perform manually maintenance or adjustment for which specific tools are planned.
- Absolutely avoid the use of damaged tools or inadequate
- Before working on flexible hydraulic pressure or disassembly of any component, ensure that the hydraulic connection is depressurised and contain no hot liquid.
- Check all connections before pressurize hydraulic connections, then after one hour after the first use.
- Do not carry cleaning, lubrication, repair or adjustment with engine running and lifting machine.
- Before the commissioning of the machine and starting work, check the surroundings and immediate carry a warning sound (horn).
- Make sure you have sufficient visibility.
- Beware of projection risk.
- If repair is complete, check that there are no tools, rags or other materials in compartments of the machine with moving parts.
- During the work, it is forbidden to give instructions or directions to several people simultaneously.
- Any instruction or indication must be given only by an operator.
- Always pay attention to the people present, especially to children.
- Make sure there is nobody within range of the active Tool.
- Never carry a person on the machine.
- In case of inactivity of the machine, stop the engine and park the vehicle on level ground; with 1st gear and parking brake involved, machine resting on the ground with the PTO disengaged.
- Never operate on steep slopes that may compromise the stability. Use extra care when cornering taking into account the length, height and weight of the machine.

SETTING UP YOUR MACHINE

HITCHING TO TRACTOR



Approach slowly with the tractor and match with the aid of necessary adjustments, the lifter arm to hitch points of equipment,



Warning-This operation must be performed without the help of other persons.



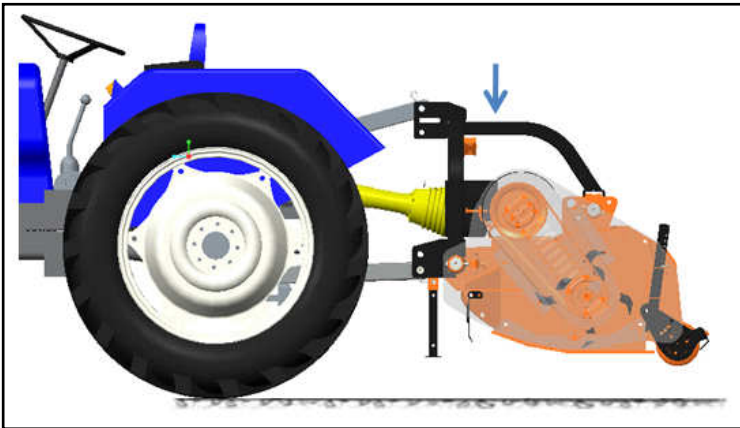
Danger-When coupling to the tractor, before introducing the stud, make sure that no part is in motion, the tractor is stopped and that the ignition key was withdrawn.

- Insert the studs and fixing pins on the two lower hitch point then the upper coupling point.
- Insert cardan shaft on the tractor PTO.
- Hook the small chain of protection to fixed parts of the tractor and the equipment.



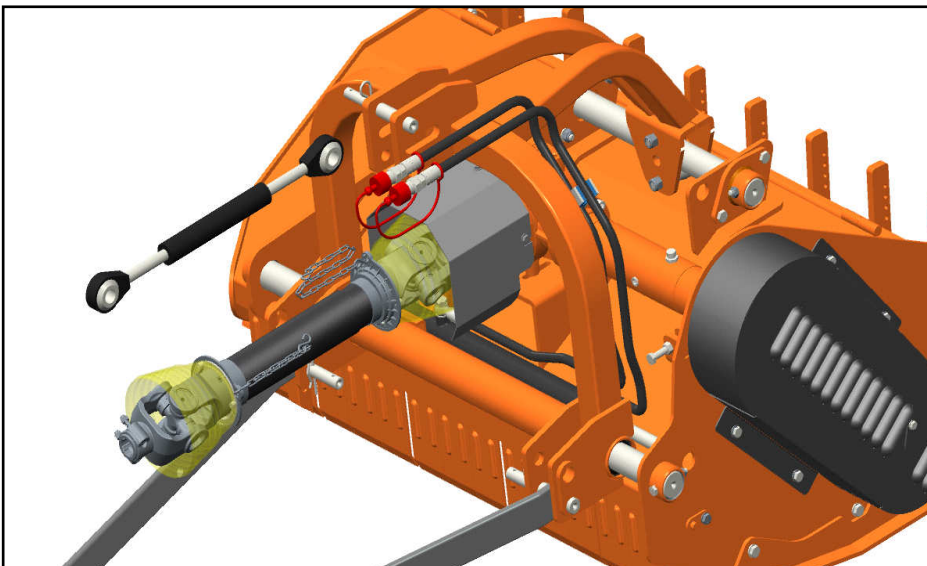
Danger – To ensure the safety of the operator and others, make sure that cardan shaft and its protections are in perfect condition and effective.

UNHITCHING FROM THE TRACTOR



For uncoupling the equipment from the tractor, proceed as follows:

- Choose a good, solid horizontal area as this will facilitate subsequent unhitching from the tractor.
- If you intend not to use the equipment for a long time, make sure it cannot be easily reached by children, then clean and lubricate for successive use.
- Lower down the equipment and press it on the ground.



Danger: Before unhitching, make sure that no part is in motion, the tractor is off, it is park in a way that is safe and ignition key has been removed.

- Disconnect the cardan shaft of the tractor's PTO and place it in the support device.
- Remove the pins of the three hitch point. Don't forget to keep the stud and the fixing pins relating thereto by introducing them into the holes of the equipment.

OPERATING INSTRUCTION

- The use of flail mower is not particularly difficult; to get the best performance just do some basic operations according to the type of work to execute.
- It will have to be particularly careful to tools (knives).
- When using the equipment on special courses and working to a very low cutting height, shock against obstacles that may be in the field can quickly use the tools, they must be maintained in good condition to get the good results.
- Prohibition of transporting people, animals and tools on the equipment.
- The user should consider other factors that may be present every time; in the following pages you will find other suggestions that can help you get good RESULT.

WORKING SPEED

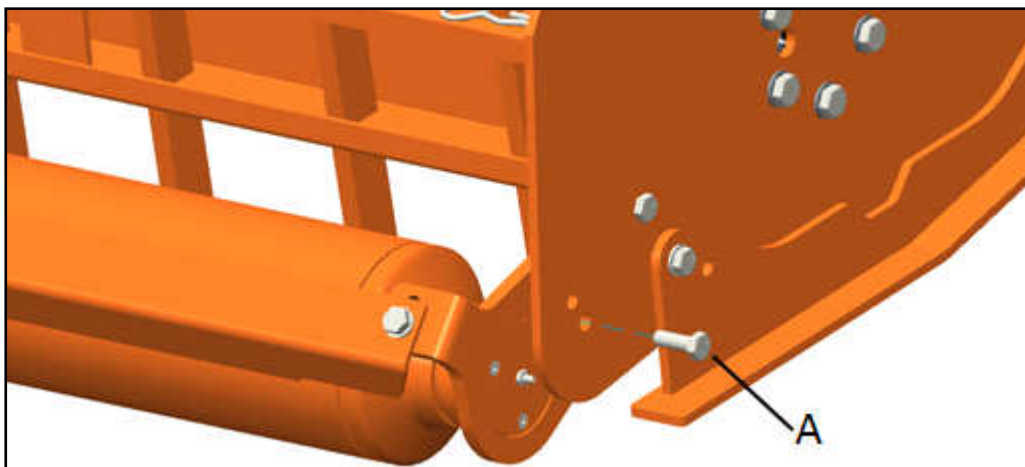
The equipment can withstand heavy working conditions. Depending on the work to execute, it will find the right compromise between feed speed and quality of work.

To achieve this goal we must consider the number of PTO RPM of 540.

Start moving only when the rotational speed has reached to the optimum speed.

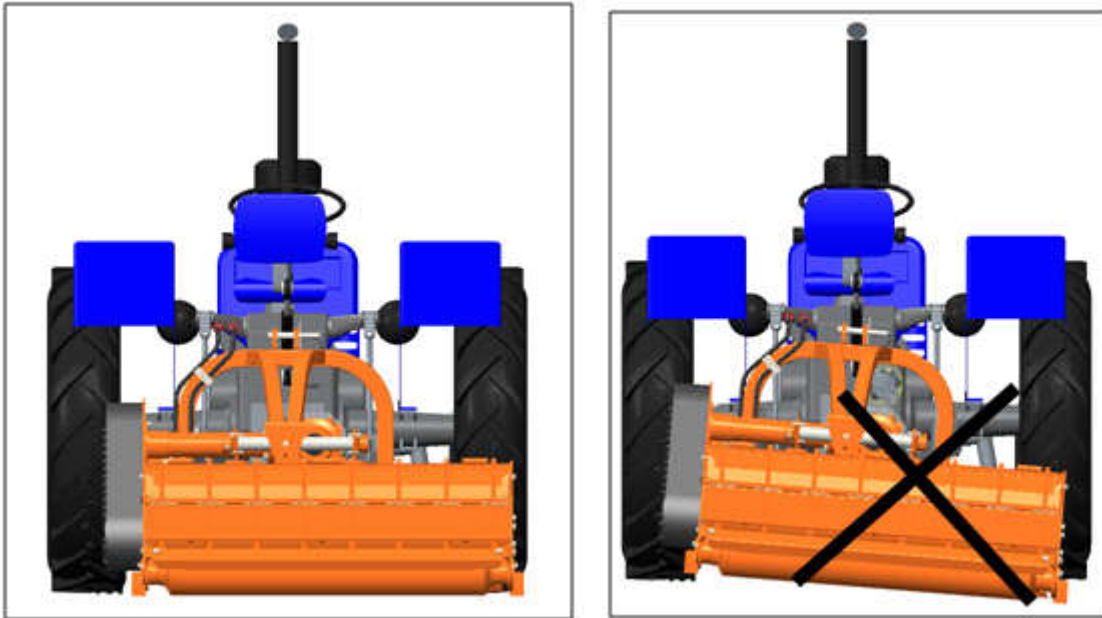
ADJUSTING THE CUTTING HEIGHT

The cutting height can be adjusted by the three point linkage system or well by regulating the height of the support roller screws << A >> that can be attached to one of three positions.



ALIGNMENT OF EQUIPMENT IN THE FIELD

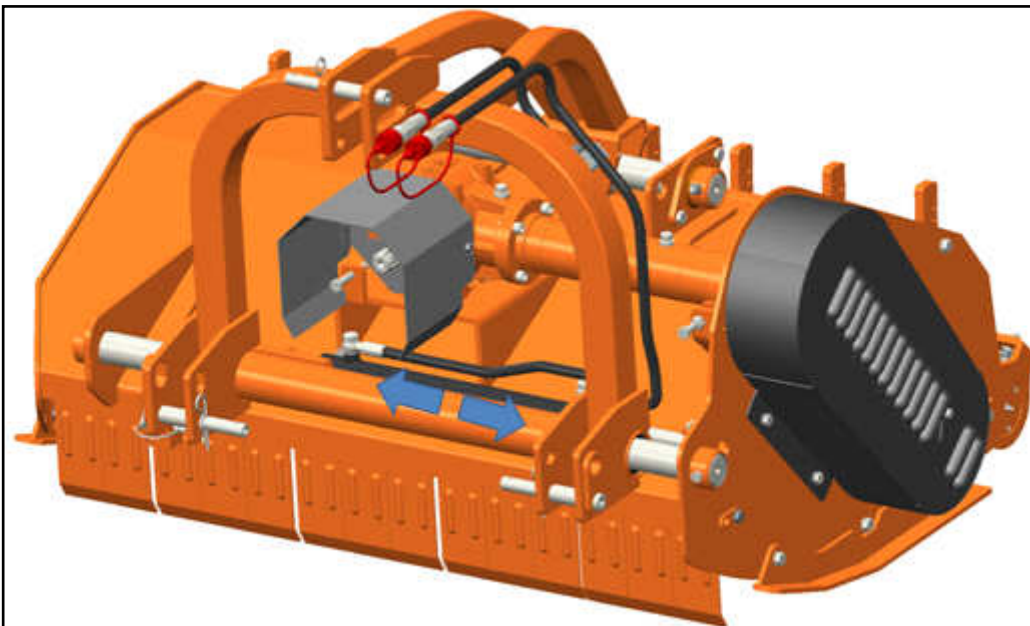
When the tractor is ready to move forward, the equipment must be in uniform manner on its length. To carry out this adjustment, use the three point linkage of the tractor.



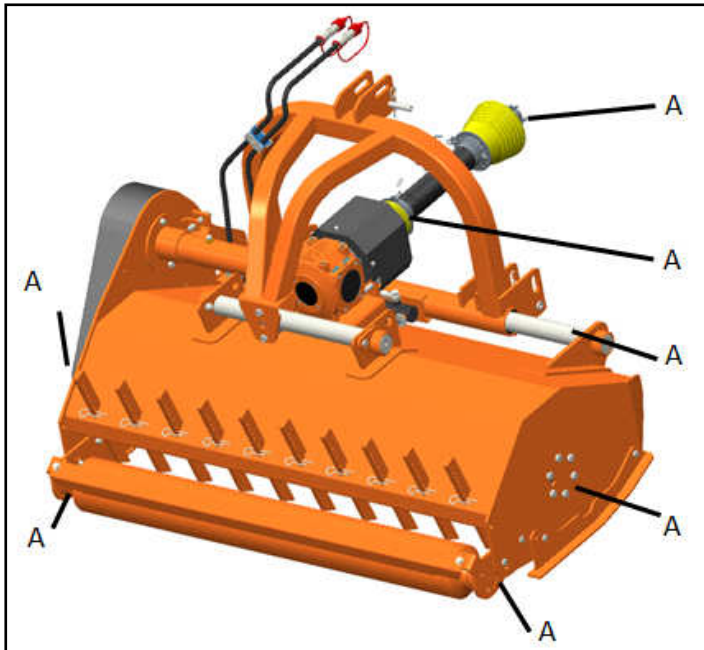
LATERAL OFFSET

This device allows offsetting the equipment relative to the path of the tractor, thereby putting several positions. Offset position can be reached by hydraulic means.

In the case of hydraulic offset, the tractor must be equipped with a distributor system. The lateral offset can be done only when it required in the field

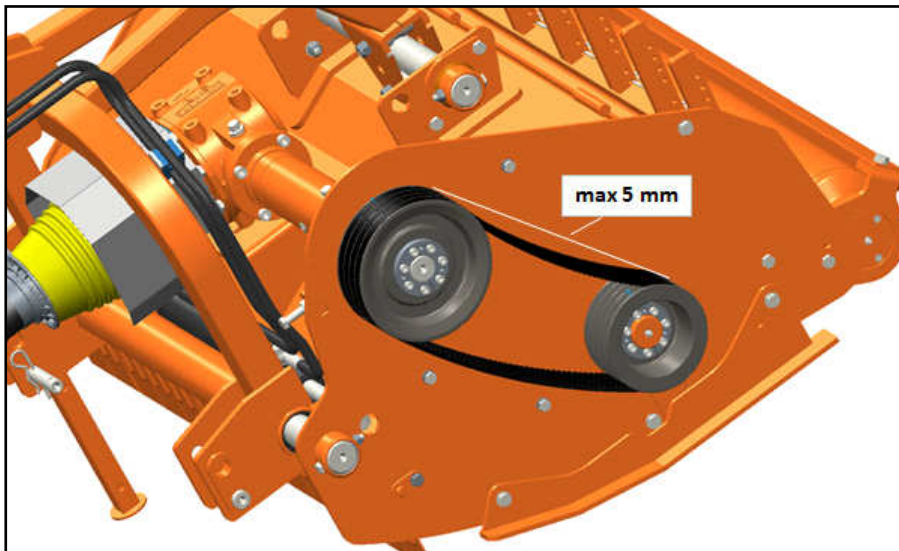


SERVICE AND MAINTENANCE



Given the different atmospheric and environmental conditions under which the equipment can be used, we recommend some maintenance operations and GET REGULAR forever good performance over time. To do this, proceed as follows.

- Every 8 hours:
- Grease the points 'A' shown in the figure
- Check wear and fastening tools at regular intervals
- Clean wash if necessary, the interior and exterior of the equipment by removing all residues that are deposited therein.



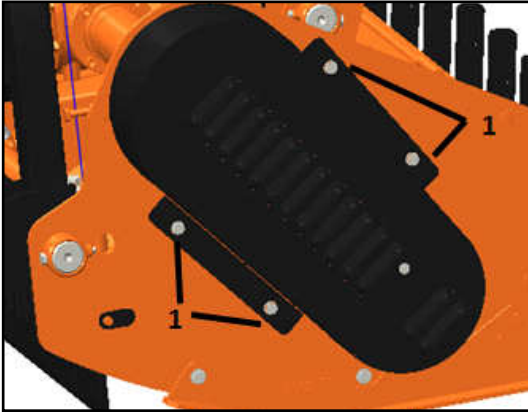
REPLACING AND ADJUSTING THE BELT

Please check the tension of the belt by operating as shown in the figure below.

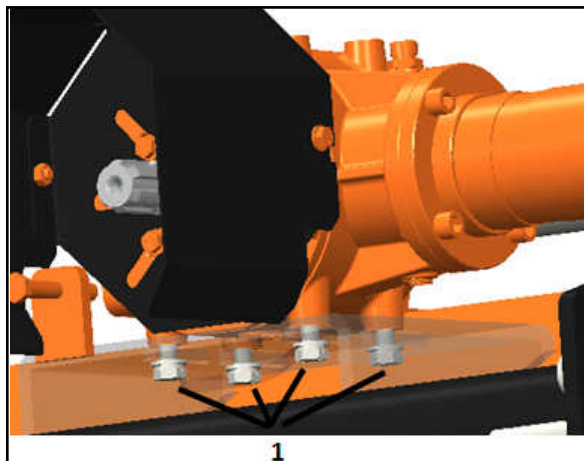
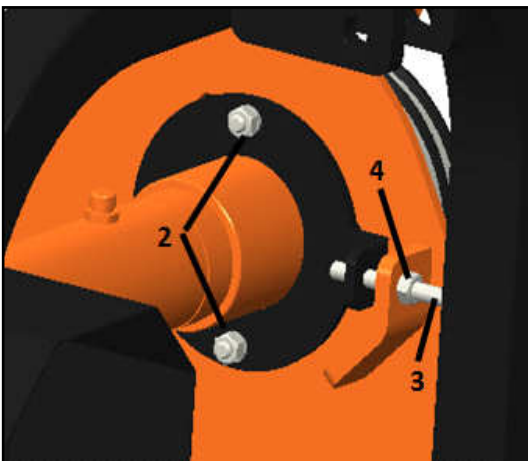
If the deflection is about 5 mm, the tension is correct.

If is not so, proceed with the adjustment in the following way (see picture below):

- loosen the four bolts (1) under the gearbox which lock it to the frame;



- loosen the two bolts (2) fixing the extension tube to the side plate of the frame;
- While holding the screw (3), loosen the lock nuts (4);
- tighten the screw (3) if the tensioning found is too low (deflection of belts higher than 5 mm); unscrew the tension nut (3) if the tensioning found is too high (deflection of belts lower than 5 mm).
- retighten the two bolts (2) fixing the extension tube to the side plate of the frame;
- move the gearbox in order to restore the position of the extension tube perpendicular to the side plate of the Flail Mower;
- retighten the four bolts (1) under the gearbox;
- reposition the safety cover in his original place.



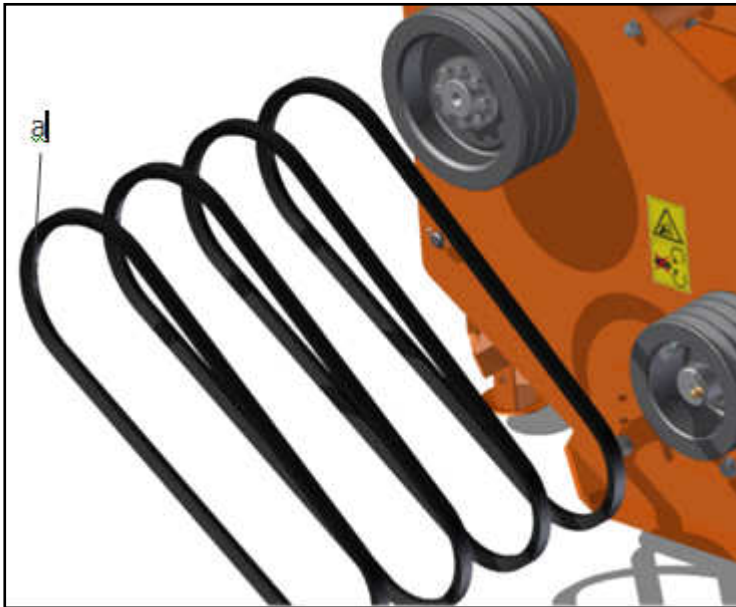
BELT REPLACEMENT

If the replacement of belts is required:

- remove the safety cover of the belts by loosening the four bolts that secure it to the frame
- loosen the four bolts (1) under the gearbox which lock it to the frame;
- loosen the two bolts (2) fixing the extension tube to the side plate of the frame;

Loosen the lock nuts (4) until the extraction of the belts from their seats on the pulleys is permitted, starting from the external position (a)

- reinsert the new belts in succession contrary to what done for the disassembly.
- adjust the belt tension according to the indications explained above
- retighten the two bolts (2) fixing the extension tube to the side plate of the frame;
- move the gearbox in order to restore the position of the extension tube perpendicular to the side plate of the Flail Mower ;
- retighten the four bolts (1) under the gearbox;
- reposition the safety cover in his original place.



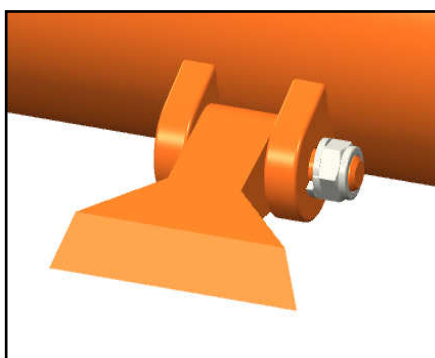
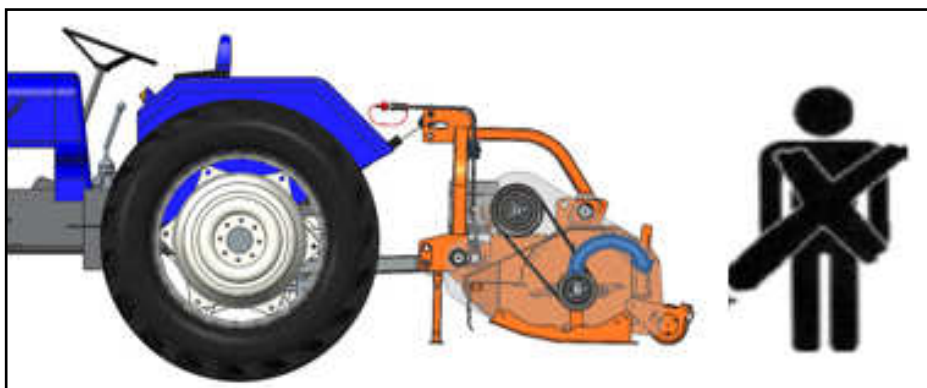
FLAIL REPLACEMENT

Replace the broken pieces or very worn-out.

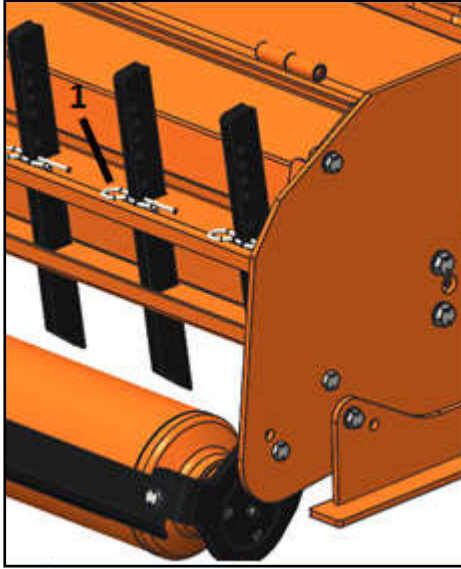
Information: To avoid any imbalance of the tool shaft, which could lead to dangerous vibrations, it should replace the diametrically opposed tools.

If you need to completely replace the tools, it is necessary to weigh each of them to avoid the vibration.

After having replaced the tools, lift the equipment and slowly increase the speed until you reach a maximum speed without obvious vibration.



RAKES ADJUSTMENT



The function of the rear rakes is to obtain a finer crushing by holding the material within the shredding room.

It is therefore recommend to perform the racks adjustment immediately after executing the cutting height adjustment.

To do this follows these steps:

- remove the upper R pins (1) from one of the rakes;
- push the rake downwards in order to retain more material inside the shredding chamber and obtain a more fine crushing. Vice-versa, pull the rake upwards to retain less material inside the shredding chamber and to obtain a more coarse crushing;
- insert the R pins (1) on the holes of the rake closest to rear bar;
- repeat the procedures adjusting all other rakes to the same height of the first one.

TROUBLESHOOTING

Some breakdowns, shown in the below table, can occur during the life span of equipment. Once you have identified the cause of the failure, you will be able to provide the remedy. If you must replace the part, we recommend that you use the original part.

In case of difficulties in solving the problems, please contact the manufacturer and / or specialized and authorized garages.



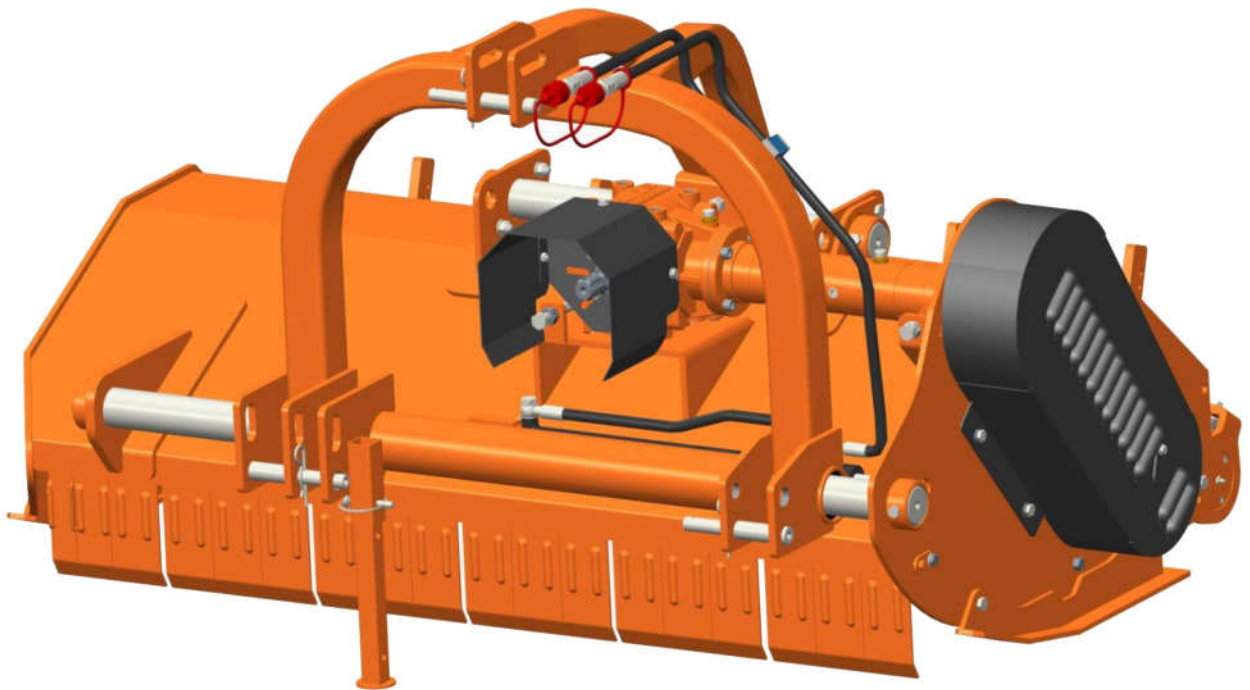
Danger: Trouble shooting, whatever the problem, should always be done with the body stopped, the tractor turned off and ignition key must be removed.

FAILURE	CAUSE	REMEDY
The support of roller is blocked.	The chopped material prevents the roller from turning. Presence of earth particle in the bearing on the inside of the roller. Bearings not enough greased.	Remove the dirt scraper and clean the roller. Replace the bearings and , to avoid this inconvenience does repeat , raise the equipment before making turns at the end of the row. Grease the points specified.
Machine vibrates	Knife is broken or worn. Loss of balancing weight	Replace the knife. Solder a new equivalent weight on the rotor.
The engine stops	Rotor blocked by pieces of wood, wire etc.	Remove the foreign body from rotor by rotating in anticlockwise direction.
Excessive power absorption	The equipment Work on wet ground. The diameter/ or the amount of material of chopping is excessive. The contact between the blade and ground is excessive.	Slow down the speed of work. Move more slowly and thus allowing the minced material has been released. Sure to correctly set the height of equipment.
The material was chopping is only slightly minced.	Too low PTO speed. The height of the equipment is not set correctly. Worn-out knives uses. Excessive feed rate.	Set the correct PTO speed. Set the equipment's height as directed. Replace the knives. Adjust the speed in relation to the cutting ability.

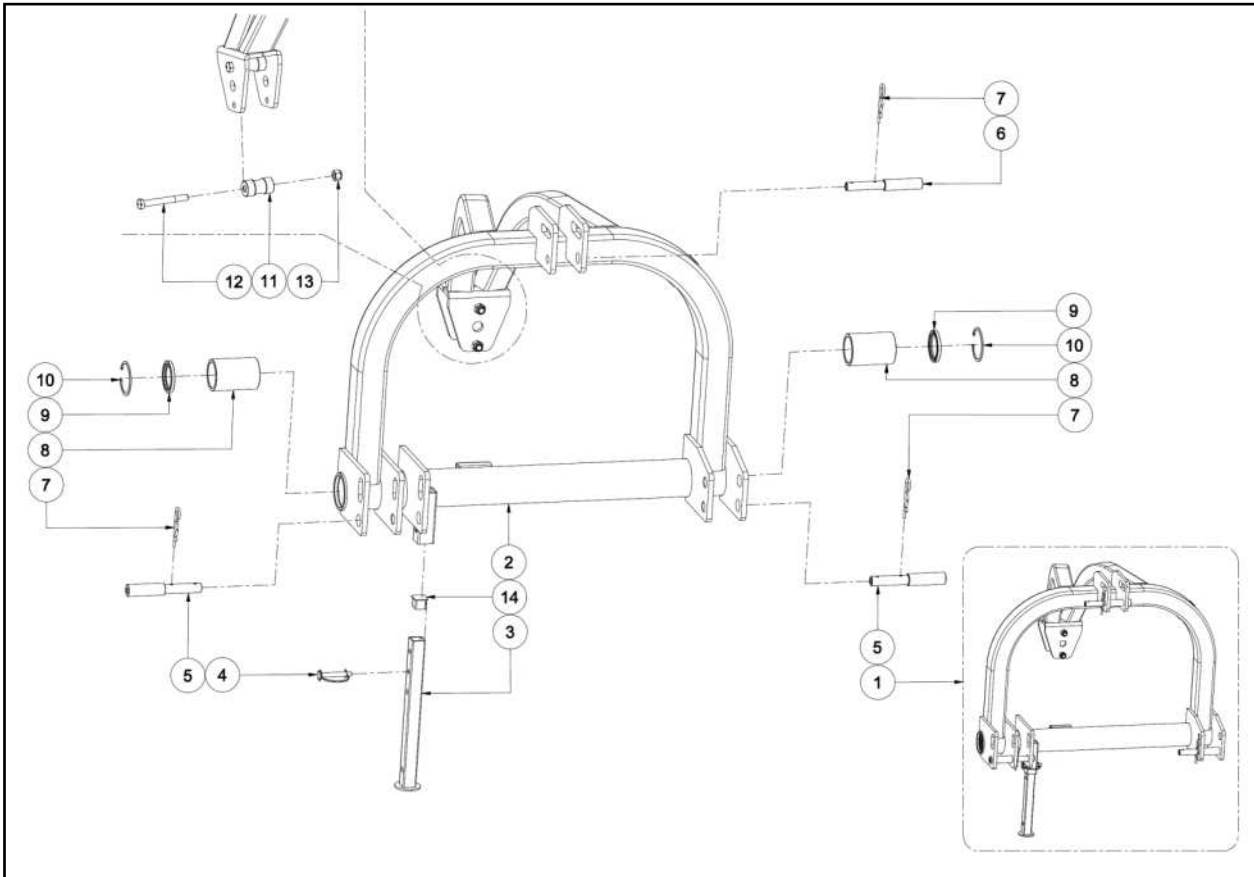
This operation must be executed by the specialized personal.

Parts Book

WFM 200 HD - WFM 225 HD



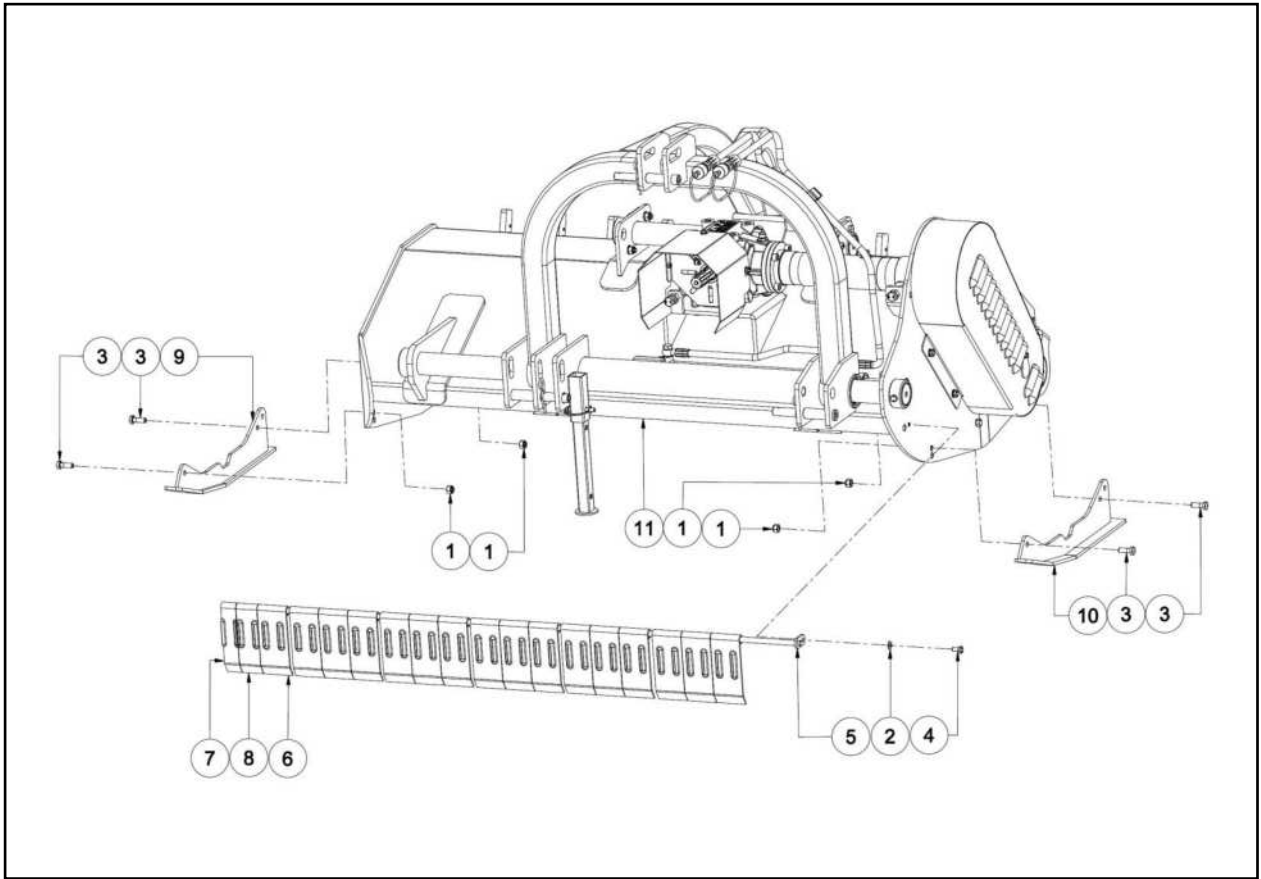
PARTS ILLUSTRATION - 'A' FRAME ASSEMBLY



PARTS LIST - 'A' FRAME ASSEMBLY

Item No.	Part No.	Description	Qty.
1	SS-17589	'A' Frame Assembly	1
2	SS-17590	'A' Frame Complete	1
3	SS-17442	Side Stand Pipe Complete	1
4	SS-14267	Square Snapper Pin D10 x L70	1
5	SS-17444	B racket Pin	2
6	SS-17445	Top Mast Pin	1
7	SS-23068	R-Clip D5 x L100mm	3
8	SS-17591	Guide Bar Bushing	2
9	SS-17284	Oil Seal - 75 x 60 x 8	2
10	SS-25216	Circlip Internal - M75 x 2.5	2
11	SS-17592	Guide Bar Roller	2
12	SS-17593	Hex Bolt M14 x 2 x 115 (HT) (8.8) Din931	2
13	SS-1574	Nylock Nut - M14 x 2.00 (Din-982)	2
14	SS-14266	Square Pipe Plastic Cap 32mm	1

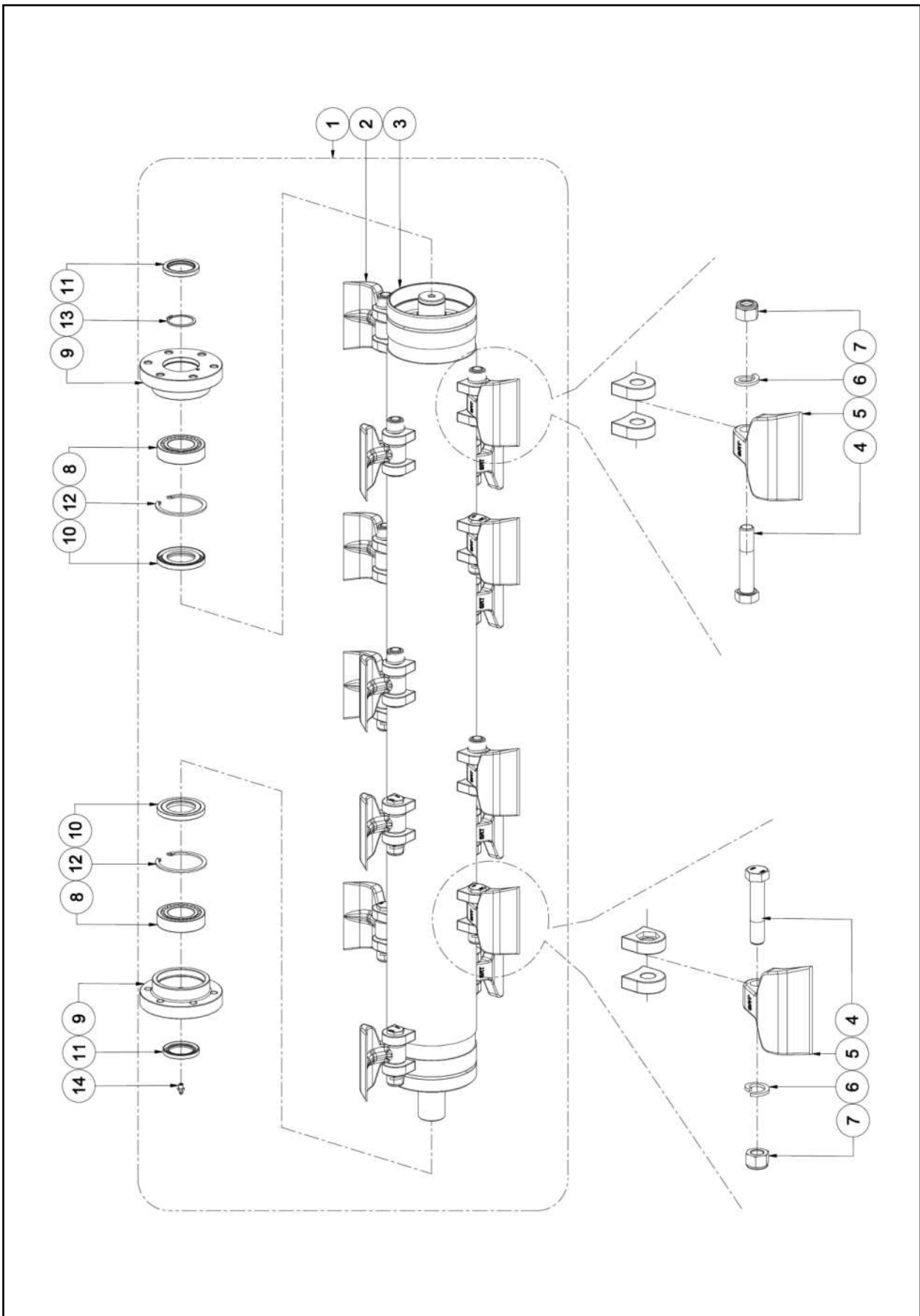
PARTS ILLUSTRATION - FRONT GUARDS AND SIDE SKID ASSEMBLIES



PARTS LIST - FRONT GUARDS AND SIDE SKID ASSEMBLIES

Item No.	Part No.	Description	Qty.
1	SS-1209	Nylock Nut M12 x 1.75 (Din 982)	4
2	SS-8078	Plain Washer - 10mm	1
3	SS-17274	Hex Bolt - M12 x 1.75 x 35 (8.8) Din 931	4
4	SS-17276	Hex Bolt - M10 x 1.50 x 20 (FT) (8.8) Din 931	1
5	SS-17600	Front Guard Rod Complete - WFM 200	1
5	SS-17601	Front Guard Rod Complete - WFM 225	1
6	SS-17456	Front Guard L83.00 - WFM 200	22
6	SS-17456	Front Guard L83.00 - WFM 225	24
8	SS-17459	Front Guard - L60.00 - WFM 225	1
9	SS-17500	Depth Skid Complete - Right Hand	1
10	SS-17501	Depth Skid Complete - Left Hand	1
11	SS-17584	Frame Complete - WFM 200	1
11	SS-17585	Frame Complete - WFM 225	1

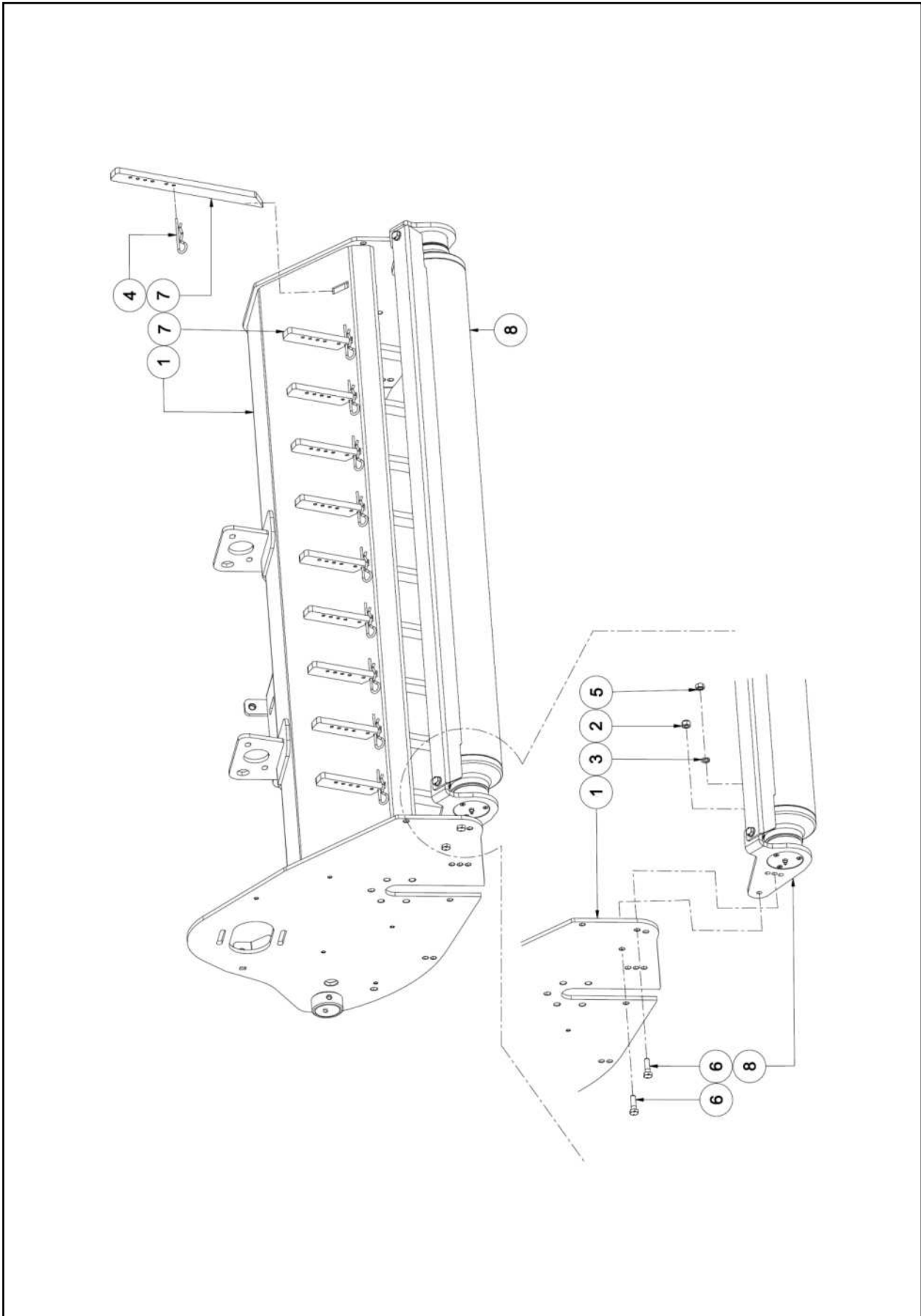
PARTS ILLUSTRATION - ROTOR ASSEMBLY



PARTS LIST - ROTOR ASSEMBLY

Item No.	Part No.	Description	Qty. per Spindle
1	SS-17603	Rotor Assembly With Housing - WFM 200	1
1	SS-17604	Rotor Assembly With Housing - WFM 225	1
2	SS-17606	Rotor Assembly With Hammer Blade - WFM 200	1
2	SS-17607	Rotor Assembly With Hammer Blade - WFM 225	1
3	SS-17609	Rotor Complete With Extention - WFM 200	1
3	SS-17610	Rotor Complete With Extention - WFM 225	1
4	SS-17521	Hex Bolt M20 x 2.5 x 100 (10.9) - WFM 200	20
4	SS-17521	Hex Bolt M20 x 2.5 x 100 (10.9) - WFM 225	20
5	SS-17067	Hammer Blade (137 x 40) (SRM) - WFM 200	20
5	SS-17067	Hammer Blade (137 x 40) (SRM) - WFM 225	20
6	SS-25548	Spring Washer M20 - WFM 200	20
6	SS-25548	Spring Washer M20 - WFM 225	20
7	SS-9017	Nylock Nut M20 x 2.50 (Din 982) - WFM 200	20
7	SS-9017	Nylock Nut M20 x 2.50 (Din 982) - WFM 225	20
8	SS-17287	Bearing 22210	2
9	SS-17611	Rotor Shaft Housing	2
10	SS-14122	Oil Seal 55 x 90 x 10	2
11	SS-17288	Oil Seal 50 x 68 x 8	2
12	SS-3027	Internal Circlip 90mm	2
13	SS-25099	Circlip External 50mm	1
14	SS-1253	1/8 BSP Grease Nipple 7.5mm	1

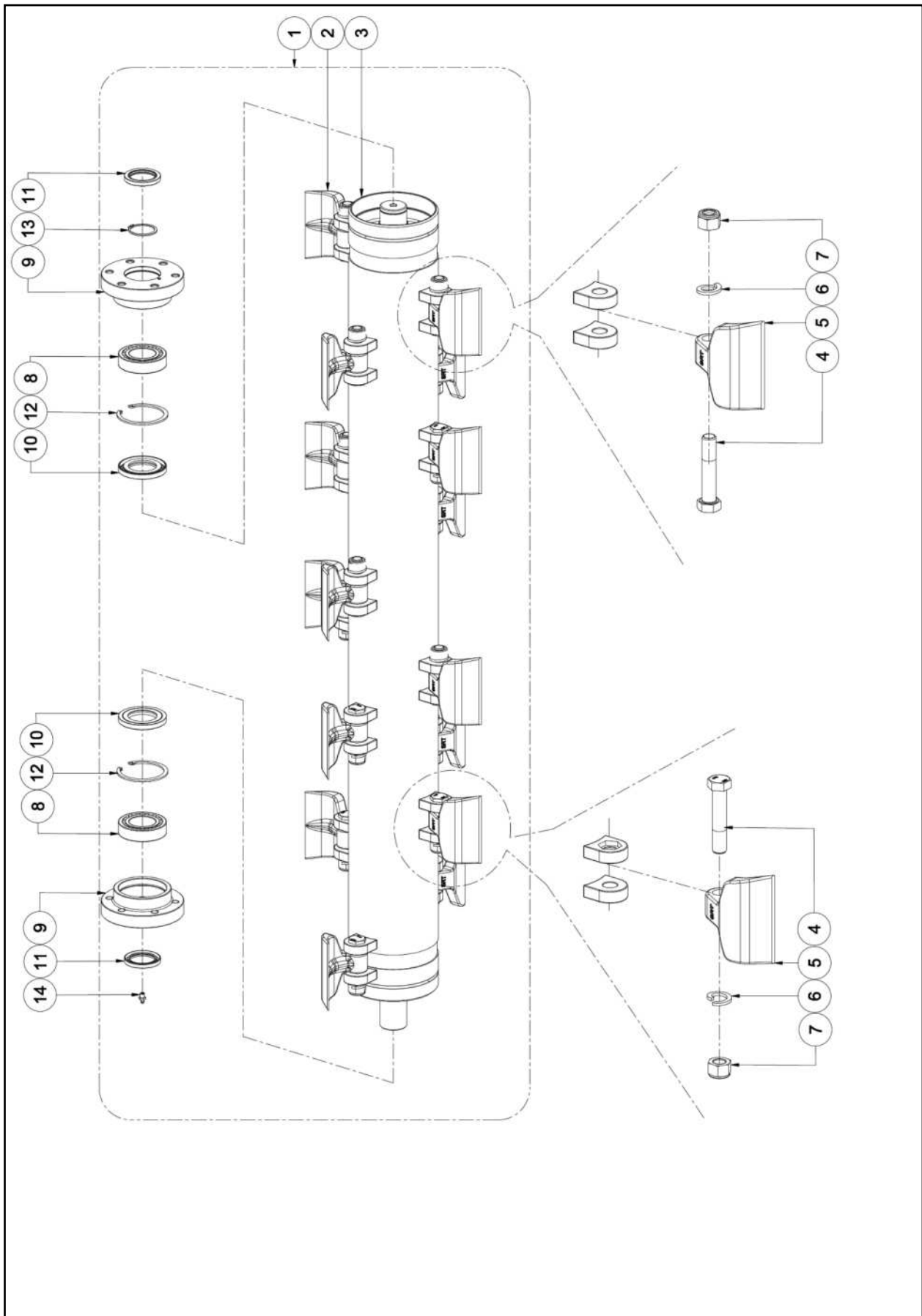
PARTS ILLUSTRATION - ROTOR ASSEMBLY WITH FRAME



PARTS LIST - ROTOR ASSEMBLY WITH FRAME

Item No.	Part No.	Description	Qty.
1	SS-17584	Frame Complete - WFM 200	1
1	SS-17585	Fame Complete - WFM 225	1
2	SS-1306	Spring Washer - 12mm	1
3	SS-1307	Spring Washer - 14mm	12
4	SS-8169	Hex Bolt - M12 x 1.75 x 25	1
5	SS-20188	Grease Nipple - M6 x 1	1
6	SS-17280	Hex Bolt - M14 x 2 x 30 (8.8) (Din 933)	12
7	SS-17603	Rotor Assembly With Housing - WFM 200	1
7	SS-17604	Rotor Assembly With Housing - WFM 225	1
8	SS-17628	Rotor Support Plate Complete	1

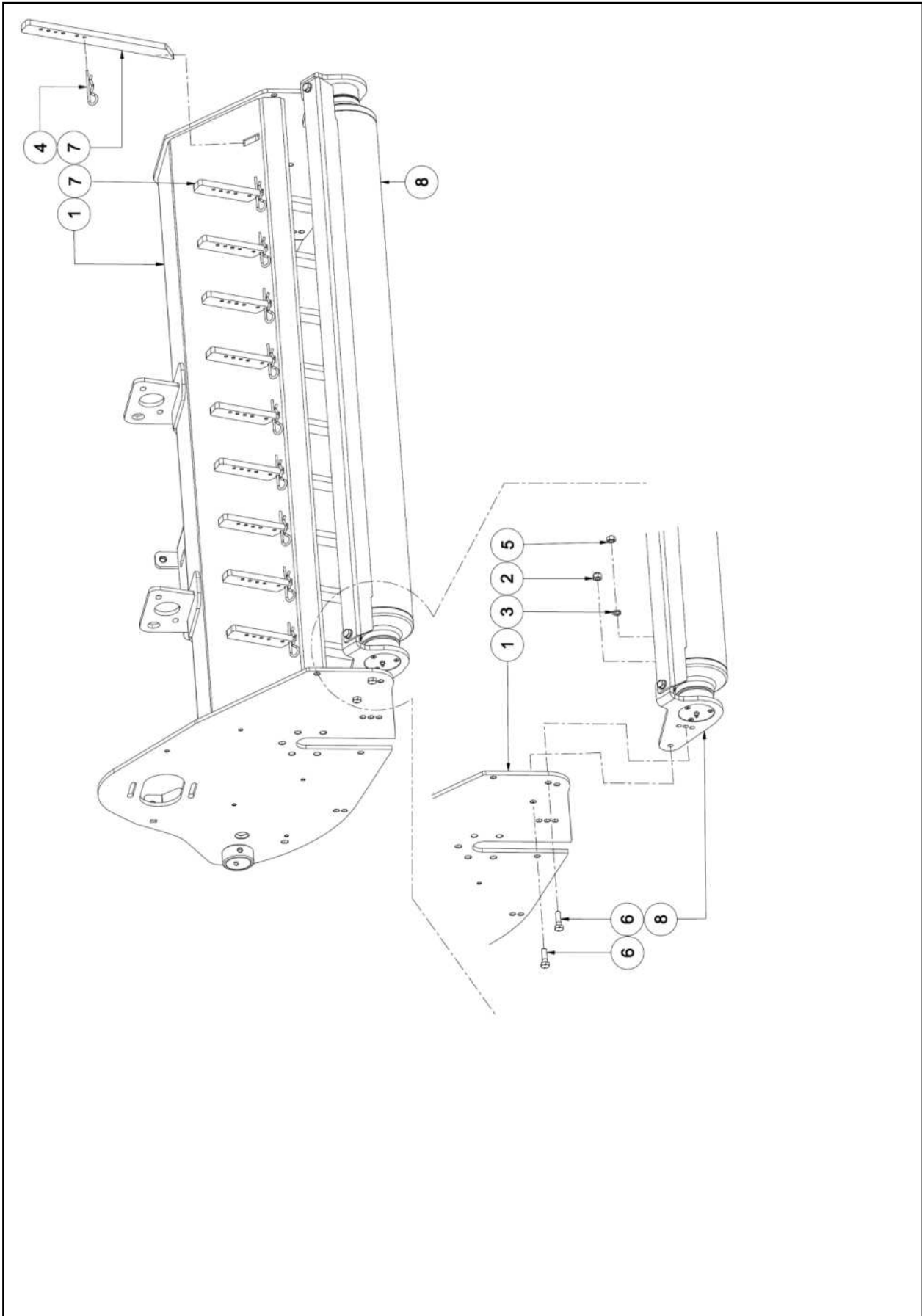
PARTS ILLUSTRATION - ROLLER ASSEMBLY



PARTS LIST - ROLLER ASSEMBLY

Item No.	Part No.	Description	Qty.
1	SS-17594	Roller Assembly - WFM 200	1
1	SS-17595	Roller Assembly - WFM 225	1
2	SS-17596	Roller Pipe Complete WFM 200	1
2	SS-17597	Roller Pipe Complete WFM 200	1
3	SS-17481	Roller Adjustment Plate -Left Hand Complete	1
4	SS-17480	Roller Adjustment Plate -Right Hand Complete	1
5	SS-17482	Roller Dust Cover Plate	2
6	SS-17598	Scraper - WFM 200	1
6	SS-17599	Scraper - WFM 225	1
7	SS-17285	Bearing - 1306	2
8	SS-1002	Circlip Internal - 72mm	2
9	SS-1001	Oil Seal - 35 x 72 x 10	2
10	SS-17487	Washer - Diameter 44 x 10.5 x 4	2
11	SS-17276	Hex Bolt - M10 x 1.50 x 20(FT) (8.8) Din 933	2
12	SS-20148	Grease Nipple M8 x 1.25	2
13	SS-17286	CSK Bolt M6 x 1 x 12	6
14	SS-8126	Plain Washer 12mm	4
15	SS-17488	Hex Bolt - M12 x 1.75 x 40 (HT) (8.8) Din 933	2
16	SS-1209	Nylock Nut - M12 x 1.75	2

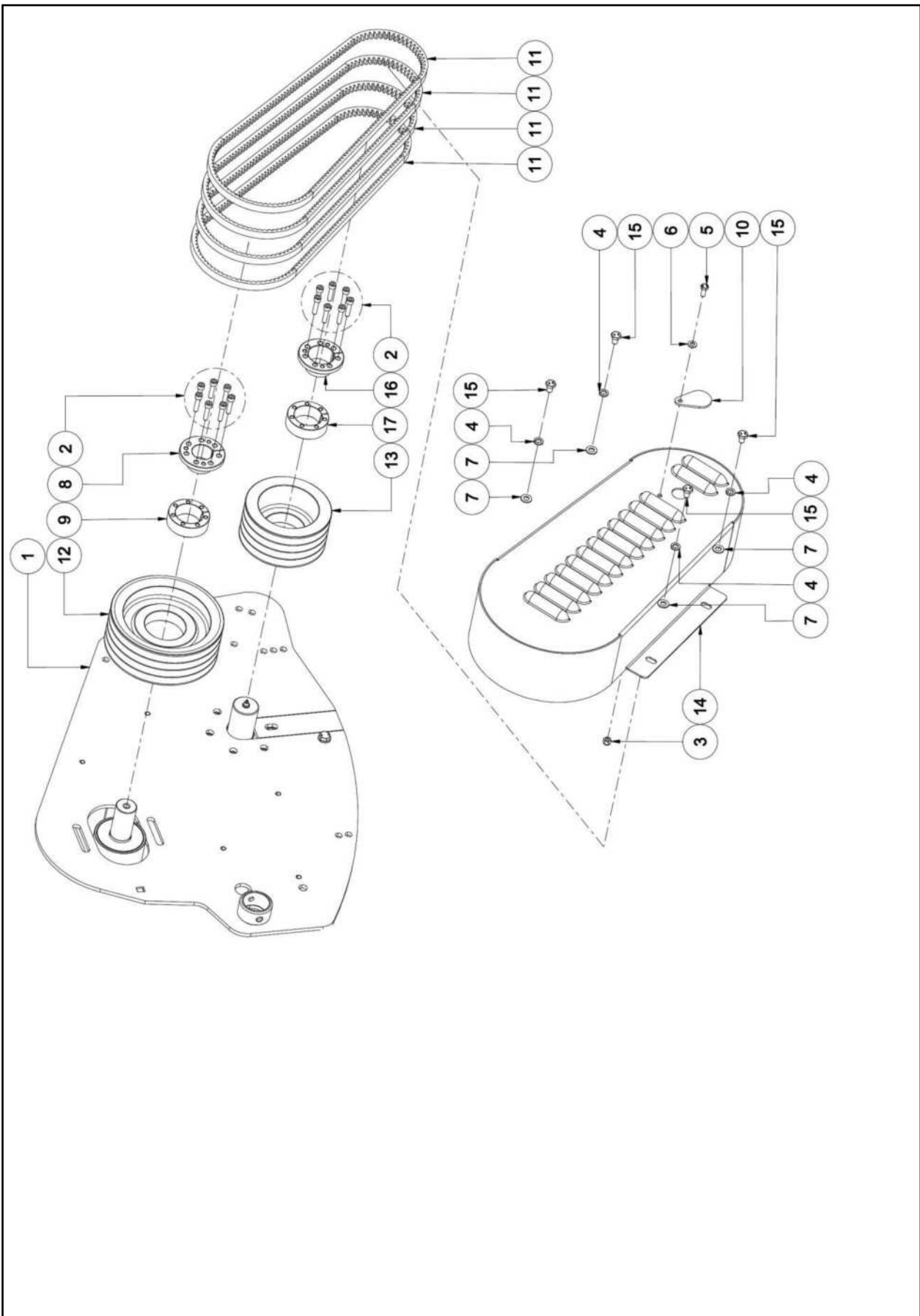
PARTS ILLUSTRATION - ROLLER AND RAKE ASSEMBLY WITH FRAME



PARTS LIST - ROLLER AND RAKE ASSEMBLY WITH FRAME

Item No.	Part No.	Description	Qty.
1	SS-17584	Frame Complete - WFM 200	1
1	SS-17585	Frame Complete - WFM 225	1
2	SS-1209	Nylock Nut - M12 x 1.75 (Din 982)	2
3	SS-1306	Spring Washer - 12mm	2
4	SS-23068	R-Clip - D5 x L100mm -WFM 200	13
4	SS-23068	R-Clip - D5 x L100mm -WFM 225	14
5	SS-17273	Hex Nut - M12 x 1.75 (Din 934)	2
6	SS-17433	Hex Bolt - M12 x 1.75 x 40 (HT) (8.8) (Din 931)	4
7	SS-17475	Rake - 40 x 16 x 420 - WFM 200	13
7	SS-17475	Rake - 40 x 16 x 420 - WFM 225	14
8	SS-17594	Roller Assembly - WFM 200	1
8	SS-17595	Roller Assembly - WFM 225	1

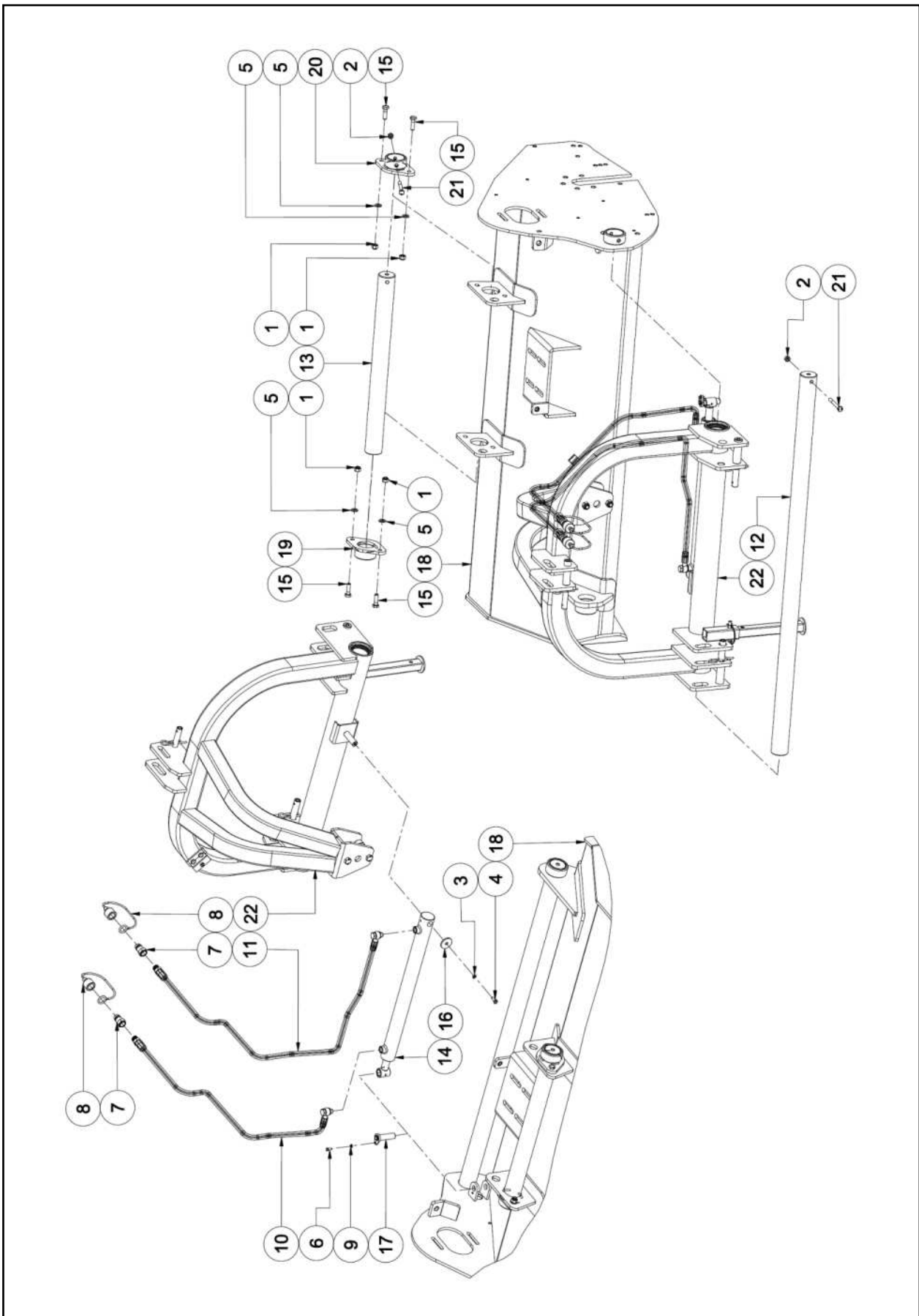
PARTS ILLUSTRATION - DRIVE ASSEMBLY



PARTS LIST - DRIVE ASSEMBLY

Item No.	Part No.	Description	Qty.
1	SS-17584	Frame Complete - WFM 200	1
1	SS-17585	Frame Complete - WFM 225	1
2	SS-17035	Allen Bolt - M8 x 1.25 x 35 (FT) (8.8)	14
3	SS-1297	Nylock Nut M8 x 1.25	1
4	SS-1304	Spring Washer 10mm	4
5	SS-8040	Hex Bolt - M8 x 1.25 x 20	1
6	SS-8064	Plain Washer - 8mm	1
7	SS-8078	Plain Washer - 10mm	4
8	SS-17036	Clamp Inner (SRM)	1
9	SS-17037	Clamp Outer (SRM)	1
10	SS-17165	Plate, Protection Grease Zerk (SFM)	1
11	SS-17290	V Belt BX53	4
12	SS-17331	SPB Type Pulley PCD = 212, 4 Groove	1
13	SS-17332	SPB Type Pulley PCD = 260, 4 Groove	1
14	SS-17450	Chain Cover Complete	1
15	SS-17451	Hex Bolt M10 x 1.50 x 15 (8.8) (Din 933)	4
16	SS-17497	Clamp Inner Diameter 50mm (BMF)	1
17	SS-17498	Clamp Outer Diameter 50mm (BMF)	1

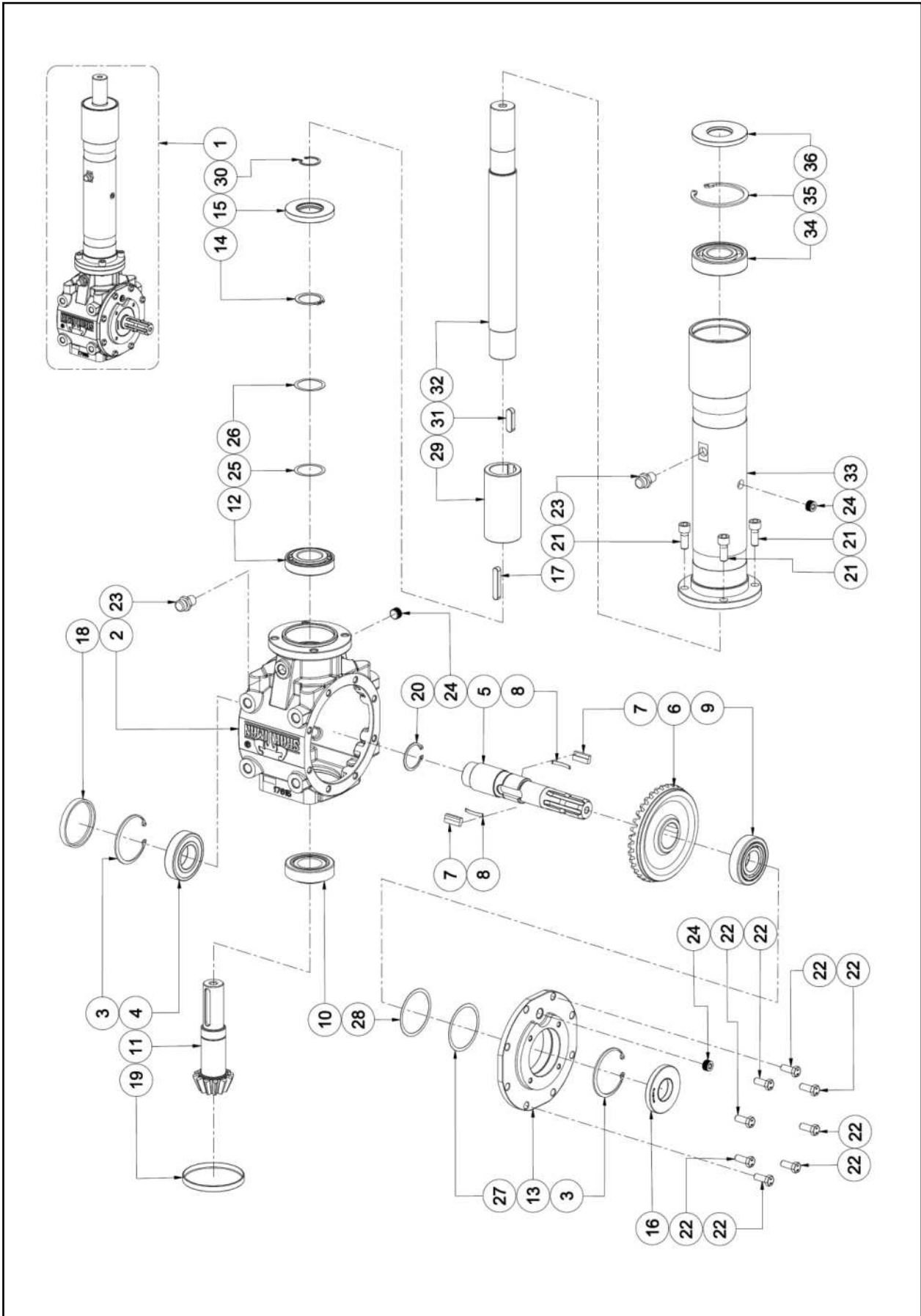
PARTS ILLUSTRATION - HYDRAULIC SIDE - SHIFT ASSEMBLY



PARTS LIST - HYDRAULIC SIDE - SHIFT ASSEMBLY

Item No.	Part No.	Description	Qty.
1	SS-1209	Nylock Nut - M12 x 1.75 (Din 982)	4
2	SS-1298	Nylock Nut - M10 x 1.50 (Din 982)	2
3	SS-1303	Spring Washer - 8mm	1
4	SS-8040	Hex Bolt - M8 x 1.25 x 20	1
5	SS-8126	Plain Washer - 12mm	4
6	SS-19157	Hex Bolt - M6 x 1 x 16	1
7	SS-8290	Quick Coupling 1/2" Male	2
8	SS-18269	QRC Plastic Cap (1/2 BSP) Female	2
9	SS-19013	Spring Washer - 6mm	1
10	SS-17188	Hydraulic Pipe Complete - 2000mm	1
11	SS-17189	Hydraulic Pipe Complete - 2400mm	1
12	SS-17579	Guide Bar - Big - WFM 200	1
12	SS-17581	Guide Bar - Big - WFM 225	1
13	SS-17580	Guide Bar - Small - WFM 200	1
13	SS-17582	Guide Bar - Small - WFM 225	1
14	SS-17418	HYD Jack - WFM 200	1
14	SS-17632	HYD Jack - WFM 225	1
15	SS-17433	Hex Bolt - M12 x 1.75 x 40 (HT) (8.8) (Din 931)	4
16	SS-17487	Washer - Diameter 44 x 10.5 x 4	1
17	SS-17499	Jack Locking Pin Complete (BMF)	1
18	SS-17584	Frame Complete - WFM 200	1
18	SS-17585	Frame Complete - WFM 225	1
19	SS-17586	Guide Bar Bush Complete - Without Hole	1
20	SS-17587	Guide Bar Bush Complete - With Hole	1
21	SS-17588	Hex Bolt M10 x 1.50 x 90 (HT) (8.8) (Din 931)	2
22	SS-17589	'A' Frame Assembly	1

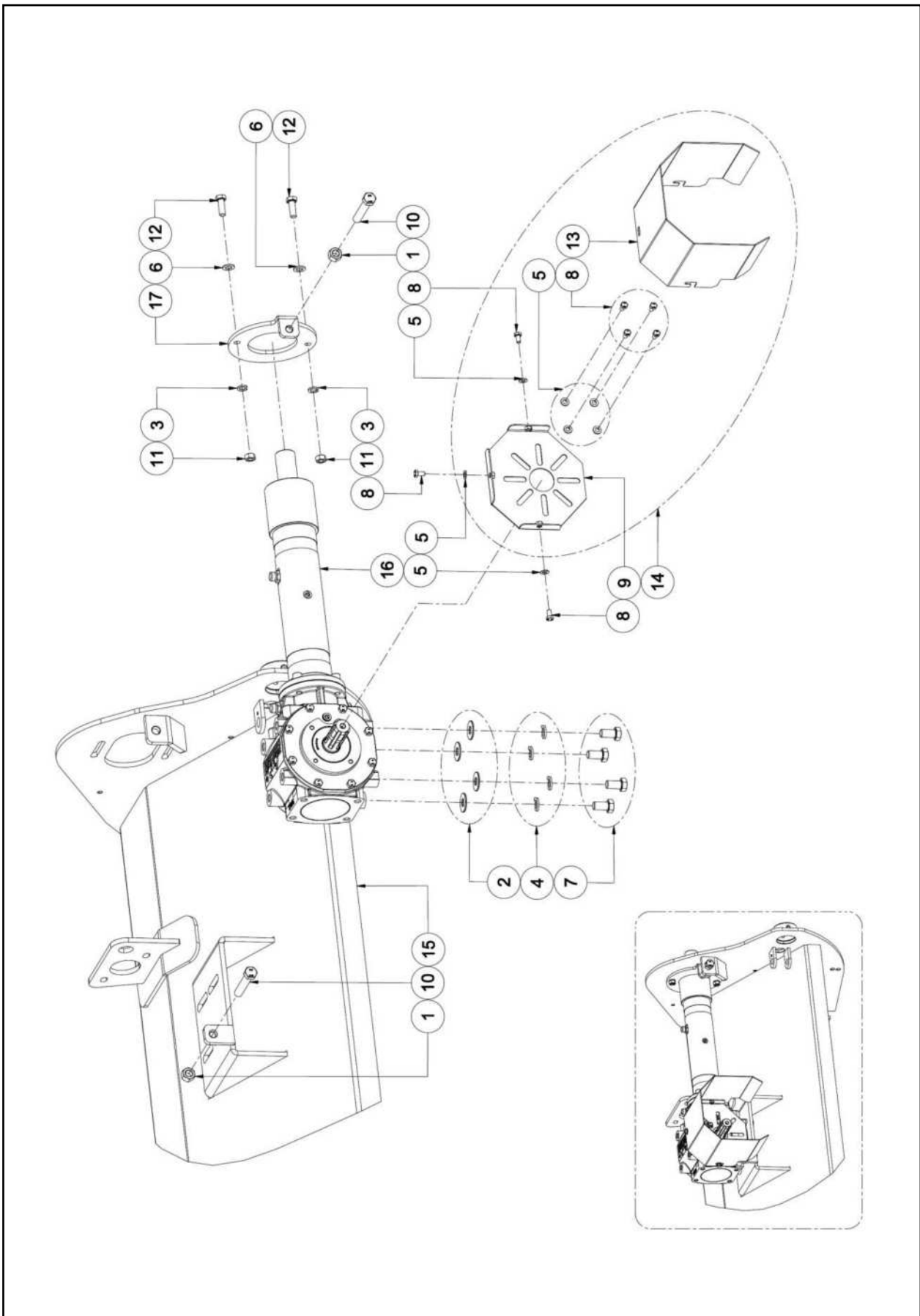
PARTS ILLUSTRATION - GEARBOX ASSEMBLY



PARTS LIST - GEARBOX ASSEMBLY

Item No.	Part No.	Description	Qty.
1	SS-17613	Gearbox Assembly - WFM 200	1
1	SS-17614	Gearbox Assembly - WFM 225	1
2	SS-17615	Gearbox - RPM - WFM 200	1
3	SS-1130	Internal Circlip - 6307 - 80mm	2
4	SS-7033	Bearing - 6208	1
5	SS-17616	Input Shaft	1
6	SS-17617	Crown - 36 Teeth 62 HP	1
7	SS-17230	Ratchet - 28mm	2
8	SS-17076	Leaf Spring (SRM)	2
9	SS-14177	Bearing - 30307	1
10	SS-14149	Bearing - 32208	1
11	SS-17618	Pinion Shaft - 12 Teeth 62 HP	1
12	SS-1022	Bearing - 30208	1
13	SS-17619	Gearbox Flange - WFM 200	1
14	SS-8027	External Circlip - 40mm	1
15	SS-8154	Oil Seal - 40 x 80 10	1
16	SS-2003	Oil Seal - 35 x 80 x 10	1
17	SS-11077	Parallel Key - 10 x 8 x 56	1
18	SS-8224	Oil Seal - 80 x 10	1
19	SS-17620	Oil Seal - 100 x 10	1
20	SS-1044	Circlip External - 42mm	1
21	SS-17027	Allen Bolt - M12 x 1.75 x 30 (FT) (8.8)	4
22	SS-10088	Hex Bolt - M10 x 1.50 x 25 (FT)	8
23	SS-14311	Air Breather 3/8" BSP (1GTSSR210)	2
24	SS-17258	Conical Special Head Bolt 3/8" BSP	3
25	SS-17621	Sims (Diameter 50 x 40.5) (0.2mm)	1
26	SS-17622	Sims (Diameter 50 x 40.5) (0.3mm)	1
27	SS-17623	Sims (Diameter 79.8 x 69) (0.2mm)	1
28	SS-17624	Sims (Diameter 50 x 40.5) (0.3mm)	1
29	SS-17025	Shaft Connector (SRM)	1
30	SS-17083	Circlip Internal - 32mm	1
31	SS-11076	Parallel Key - 12 x 8 x 40	1
32	SS-17502	Jack Shaft - WFM 200	1
32	SS-17625	Jack Shaft - WFM 225	1
33	SS-17503	Jack Shaft Housing Complete - WFM 200	1
33	SS-17626	Jack Shaft Housing Complete - WFM 225	1
34	SS-8036	Bearing - 6308	1
35	SS-3027	Internal Circlip - 90mm	1
36	SS-17026	Oil Seal 90 x 40 x 8 (SKF)	1

PARTS ILLUSTRATION - GEARBOX AND LOCKING PLATE ASSEMBLY



PARTS LIST - GEARBOX AND LOCKING PLATE ASSEMBLY

Item No.	Part No.	Description	Qty.
1	SS-2209	Hex Nut - M16 x 2	2
2	SS-1078	Plain Washer - 16mm	4
3	SS-1306	Spring Washer - 12mm	2
4	SS-1308	Spring Washer - 16mm	4
5	SS-8064	Plain Washer - 8mm	7
6	SS-8126	Plain Washer - 12mm	2
7	SS-8202	Hex Bolt - M16 x 2 x 30	4
8	SS-8190	Hex Bolt - M8 x 1.25 x 15	7
9	SS-1546	PTO Shaft Guard Mount Plate Complete	1
10	SS-1579	Hex Bolt - M16 x 2 x 90 (FT) (8.8)	2
11	SS-17273	Hex Nut - M12 x 1.75 (Din 934)	2
12	SS-17274	Hex Bolt - M12 x 1.75 x 35 (8.8) (Din 931)	2
13	SS-17558	PTO Shaft Guard	1
14	SS-17559	PTO Shaft Guard Assembly	1
15	SS-17584	Frame Complete - WFM 200	1
15	SS-17585	Frame Complete - WFM 225	1
16	SS-17613	Gearbox Assembly - WFM 200	1
16	SS-17614	Gearbox Assembly - WFM 225	1
17	SS-17627	Jack Shaft Housing Clamp Plate	1

PTO SHAFT OPERATION AND MAINTENANCE

IMPORTANT!

P.T.O. drive shafts must only be used for their intended purpose.

P.T.O. drive shafts are designed for specific machine types and power requirements.

They must not be replaced by other models.

Ensure that the P.T.O. drive shaft is securely connected.

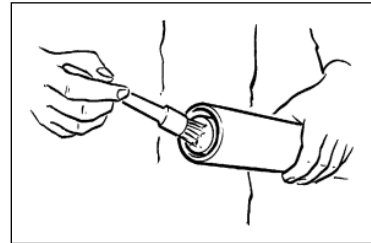
Only use a completely protected drive system:

P.T.O. drive shaft with complete guard and complementary guard on tractor and implement. A complete guard is essential in all working positions.

LUBRICATION

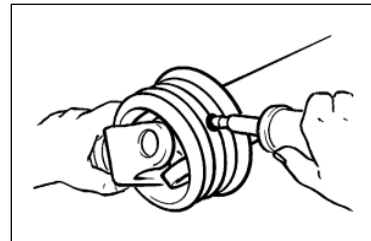
Lubricate with quality grease before starting work and every 40 operating hours.

Ensure the P.T.O. guard bearings are lubricated, the end ball shaped covers need retracting to expose all grease nipples.



Clean and grease the P.T.O. drive shaft before each prolonged period of non-use.

Grease the guard tubes in winter to prevent freezing.

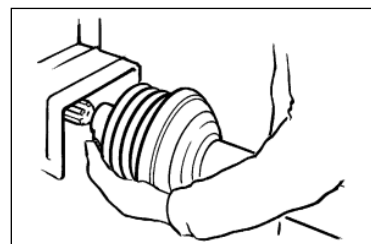


COUPLING THE P.T.O. SHAFT

Clean and grease the P.T.O. and PIN

Q.-d pin

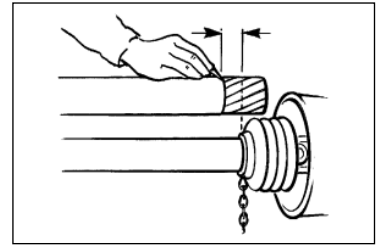
Press q.-d. pin and simultaneously push P.T.O. drive shaft onto P.T.O. until pin engages.



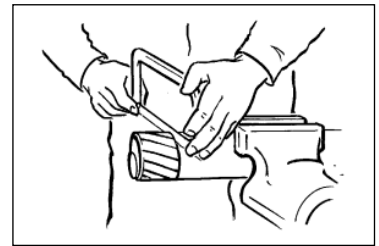
PTO SHAFT OPERATION AND MAINTENANCE

LENGTH ADJUSTMENT

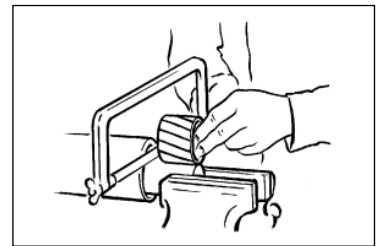
To adjust the length, hold the half-shafts next to each other in the shortest working position and mark them.



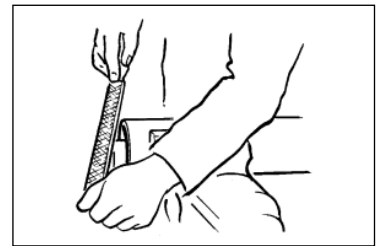
Shorten inner and outer guard tubes equally.



Shorten inner and outer sliding profiles by the same length as the guard tubes.



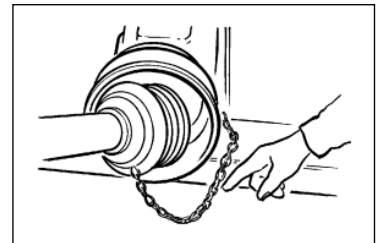
Round off all sharp edges and remove burrs.
Grease sliding profiles.



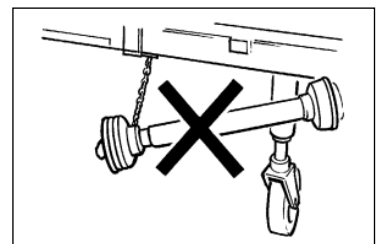
No other changes may be made to the P.T.O. drive shaft and guard.

CHAINS

Chains must be fitted so as to allow sufficient articulation of the shaft in all working positions.



Do not let the chains encircle the P.T.O. guard in use as this will shorten the life of the P.T.O. guard.



The PTO drive shaft must not be suspended from the chains! Please use the P.T.O. Support Hook provided.

SAFETY TRAINING INDUCTION

The undersigned personnel have been trained in the safe use of this Wessex machine and have understood the contents of the Operator's Manual.

Date	OPERATOR		INSTRUCTOR/TRAINER	
	Name	Signature	Name	Signature



Certificate of CE Conformity

Machine Model:

WFM 200HD / WFM225HD

Description:

FLAIL MOWER

*I hereby certify that the machine detailed hereon
conforms to:*

**European Directives 2008/42/EC
Supply of Machinery Regulations 2008
As amended 91/368EEC – 93/44EEC – 93/68EEC
HSE AIS 33**

Signed:

A handwritten signature in black ink, appearing to be 'RAN', written over a dotted line.

Quality Manager

Date:

MARCH 2016

Wessex International

Charlton House, Caxton Place, East Portway Industrial Estate, Andover, Hampshire SP10 3QN
Telephone: 01264 345870 Fax: 01264 345 880

www.wessexintl.com



Wessex International
Charlton House, Caxton Close, East Portway Industrial Estate, Andover Hampshire. SP10 3QN
Telephone: 01264 345870 Fax 01264 345880
e-mail: sales@wessexintl.com

www.wessexintl.com
