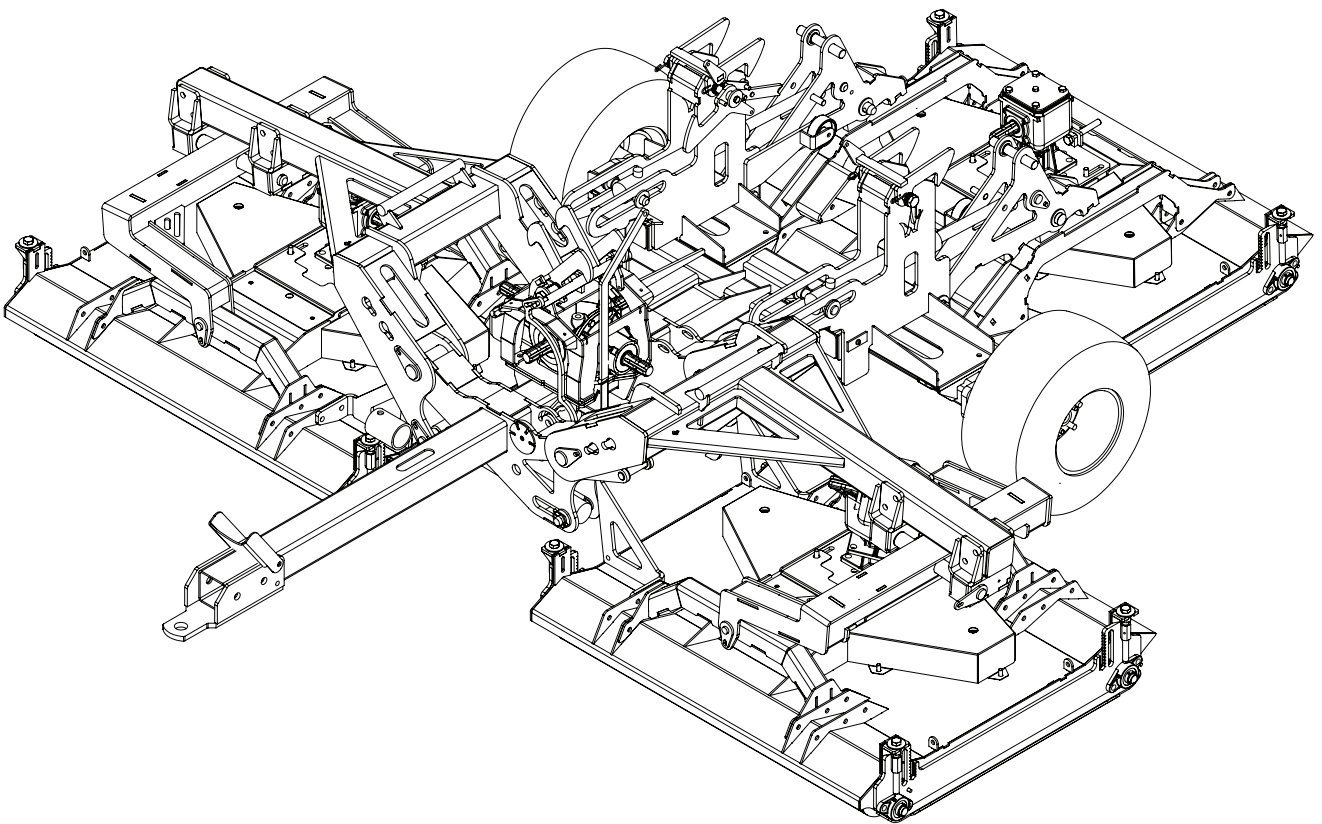




---

# Operation Manual and Parts Book

Wessex CRX-320 Tri-Deck Roller Mowers



Product Code: L2064

---



Issue March 2019



# CONTENTS

---

Welcome to your new Wessex Product	3
Safety Decals	4, 5
Important Safety Warnings	6
Warranty	7
Linking up to the Tractor	8
Using the Mower	8
Altering the Cutting Height / Belt Adjustment	9
Maintenance / Lubrication	10
Troubleshooting / Winter Storage	11
Cutting Blades / Specifications	12
CRX Trideck Hitch Guide	13
PTO Shaft - Operation and Maintenance	14, 15
Parts Illustration and Parts List - CRX120 Drive Assembly	16
Parts Illustration and Parts List - CRX 120 Rollers	17
Parts Illustration - Spindle and Blade Assembly	18
Parts List - Spindle and Blade Assembly	19
Parts Illustration - Mainframe	20, 21
Parts List - Mainframe	22, 23
Parts Illustration - Wing Frame Assembly	24
Parts List - Wing Frame Assembly	25
Parts Illustration - Rear Chassis	26
Parts List - Rear Chassis	27
Parts Illustration and Parts List - Centre Latch Assembly	28
Parts Illustration and Parts List - Rear Latch Assembly	29
Parts Illustration - CRX Central Gearbox	30
Parts List - CRX Central Gearbox	31
Safety Training Induction	32
Daily Inspection Record	33
Notes	34
CE Certificate	35



## **WELCOME TO YOUR NEW WESSEX PRODUCT**

---

Thank you for purchasing a Wessex product. As a Wessex customer, you now number among the most important people of our business and we will endeavour to give you the best service available through our dealer network.

Please read this Manual carefully and familiarise yourself and other persons that will be using the machine with its contents, to ensure the optimum performance and working life of your machine. It is advisable that a copy of this Manual is kept in the workshop and one copy with the machine. Further copies are available through your dealer.

On delivery, your dealer should go through the workings of the machine with you, explaining the setting up procedures, all of which are contained in this manual for further reference. The Warranty Registration Form must also be completed and returned to us **within 7 days of delivery** in order to validate the Warranty.

**PLEASE READ THE FOLLOWING PAGES CAREFULLY BEFORE USING YOUR MACHINE  
AND KEEP THIS MANUAL IN A SAFE PLACE.**



**THIS SAFETY SYMBOL IS TO ALERT OPERATORS OF A HAZARD  
THAT MAY RESULT IN INJURY.  
ALWAYS FOLLOW INSTRUCTIONS CAREFULLY**

## SAFETY DECALS



- GB **ATTENTION** Description of pictograms.  
 F **ATTENTION** Description des pictogrammes.  
 D **VORSICH** Beschreibung der piktogramme.



- GB Read Operating manual before use.  
 F Lisez Manual D'Opération avant l'utilisation.  
 D Vor der Benutzung, Betriebshandbuch lesen.



- GB Ear defenders must be worn.  
 F Défenseurs des oreilles doivent être portés.  
 D Gehörschutz getragen werden.



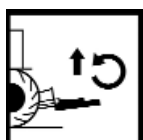
- GB Never remove guards or attempt adjustment until rotor has stopped.  
 F Ne retirez jamais les gardes ou d'ajustement tentative jusqu'à ce que toutes les pièces mobiles ont été interrompus.  
 D Schutzvorrichtung niemals abnehmen oder einstellung versuchen, bevore der rotor abstellt.



- GB Bystanders must be at least 20 metres from machine range of action.  
 F Des spectateurs doivent s'écarter au moins 20 mètres du rayon d'action de la machine.  
 D Umstehenden müssen sich mindestens 20 meter vom maschinenbetriebsraum entfernen.



- GB Stand clear. Flying objects possible.  
 F S'écarter! Possibilité d'objets volants.  
 D Zurückbleiben! Herumfliegende objekte möglich



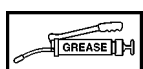
- GB Lift Machine before turning  
 F Levez la machine avant de la tourner  
 D Maschine aufheben, bevor man sie umdreht.



- GB Examine blades regularly. The operator is responsible for machine damage caused by unbalanced rotors.  
 F Examinez des lames régulièrement. L'opérateur est responsable des dommages à la machine provoqués par des rotors mal équilibrés  
 D Klingen regelmäßig kontrollieren. Der abeiter ist an den durch unausgewogenen rotoren maschinenschäden verantwortlich.



- GB Keep hands and feet clear  
 F Garder les mains et les pieds.  
 D Halten Sie Ihre Hände und Füße.



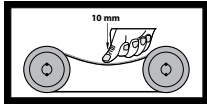
- GB Grease points  
 F Les points de graissage  
 D Grease Punkte.

## SAFETY DECALS

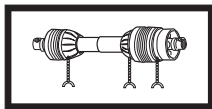
---



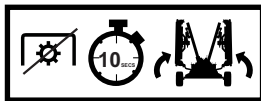
- GB Lifting Point  
F Point de levage  
D Anschlagpunkt



- GB CORRECT BELT TENSION: Check belt tension regularly: 10mm of belt deflection at thumb pressure between pulleys.  
F TENSIONNEMENT CORRECT DE LA COURROIE : Contrôler le tensionnement régulièrement : la déflexion de la courroie sous la pression du pouce entre les deux poulies doit être de 10 mm.  
D KORREKTE RIEMENSPIANNUNG: Riemenspannung regelmäßig überprüfen: 10 mm Eindrücktiefe bei Daumendruck zwischen Riemenscheiben.



- GB Safety Chains must be anchored tightly. Never allow chains to wrap round PTO shaft. Grease PTO shaft regularly.  
F Chaînes de sécurité doit être ancré solidement. Ne laissez jamais les chaînes à entourer le transmission. Régulièrement graisse le transmission.  
D Sicherheitsketten müssen fest verankert sein. Lassen Sie niemals Ketten zu runden Zapfwelle zu wickeln. Fett Gelenkwelle regelmäßig.



- GB When machine is operating with the wings down, please ensure that the tractors hydraulic spool valve is in the float position.  
F Lorsque la machine est en marche avec les ailes vers le bas, s'il vous plaît assurer que le distributeur à tiroir hydraulique des tracteurs est en position flottante.  
D Wenn die Maschine mit Flügeln nach unten läuft, stellen Sie bitte sicher, dass der Schlepperhydraulik Schieberventil in der Schwimmstellung ist.



- GB Disengage the PTO drive and wait for 10 seconds before lifting wings into their latched position.  
F Désengager la prise de force et attendre 10 secondes avant de soulever les ailes dans leur position de verrouillage.  
D Lösen Sie den Zapfwellenantrieb und 10 Sekunden warten, bevor Flügel in ihre Verriegelungsposition anheben.

## IMPORTANT NOTICE

### FITTING PTO SHAFT TO MACHINE & TRACTOR

---

- All safety chains must be anchored tight enough to allow a small amount of movement, but not enough to wrap around the P.T.O. Shaft.
- Ensure that the shafts and guards are regularly greased to avoid overheating and to give lubrication.
- **Important:** Thoroughly read through the P.T.O. manufacturers instruction book provided with the CRX before using the P.T.O. Shaft.

**P.T.O. Shafts are not covered by the Wessex Warranty.**

## IMPORTANT SAFETY WARNINGS

---



Wessex machines are guarded for your protection, but you must always observe certain elementary precautions. Machines are potentially **dangerous** and should be used with the greatest respect and **ALL OPERATORS MUST** read this manual and be aware of all safety precautions.

1. **NEVER** attempt any adjustment whatsoever, unless the machine is **COMPLETELY** at a standstill and the P.T.O. drive and blades have stopped turning. **Stop Engine and remove Tractor Key.**
2. **NEVER** attempt to clear any obstructions around the mower unless the machine is **COMPLETELY** at a standstill and the P.T.O. drive and blades have been stopped. **Stop Engine and remove Tractor Key.**
3. **NEVER** remove belt guards unless the machine is **COMPLETELY** at a standstill. **Stop Engine and remove Tractor Key.**
4. **NEVER** remove safety guards which are provided for your protection.
5. **NEVER** operate the mower with people around, keep everybody (especially children and animals) at a safe distance, **minimum 20 metres.**
6. Stand well back from the machine when cutters are spinning.
7. Regularly inspect the **BLADES AND FIXING BOLTS** to ensure that they are in excellent condition. Replace blades **IMMEDIATELY** if any signs of fracture or excess wear becomes apparent. Serious damage, which is excluded from our warranty conditions, may result from using your mower with an unbalanced rotor. When replacing blades, always fit new mounting bolts and nuts to ensure that the rotor is balanced and running smoothly.

### HEALTH AND SAFETY - Noise at Work Regulations

#### READING AT THE OPERATORS EAR

Wessex CRX Roller mower: **Approximately 95 D.B.A**

Depending on conditions, powering tractor and material being cut, this reading may alter, it is therefore advisable for users to do their own assessment.



In compliance with the above regulations, Ear Protectors must be worn when operating this machinery.



## WARRANTY

---

Your Wessex product or equipment is warranted free from defect in workmanship or manufacture for one year from date of purchase. Any parts which appear to us to be defective, either in material or workmanship shall be replaced or repaired at no cost to the purchaser, subject to the following conditions:

1. You should register your product within seven days of purchase via our Website:  
*[www.wessexintl.com/warranty-registration](http://www.wessexintl.com/warranty-registration)*  
Alternatively if you prefer, please telephone Wessex International on +44 (0)1264 345888.
2. Any failure in the machine should be reported in the first instance immediately to your dealer, who will act on your behalf to resolve the matter to your satisfaction.
3. The defective parts will be returned by your dealer to us, accompanied by a full statement describing the failure and the circumstances and conditions in which the failure occurred.
4. The following are specifically excluded from our terms of warranty:
  - a) Fair wear and tear, especially to belts, blades, bearings and bushes.
  - b) Damage caused through incorrect adjustment (see instructions).
  - c) Damage caused by neglect or lack of lubrication.
  - d) Damage caused by misuse or abuse, including impact damage to blades.
  - e) Damage caused whilst the machine is in transit.
  - f) **Damage caused to the frame of the machine by running the machine with unbalanced rotors, blades or blade bars.**
  - g) Damage caused to the machine by use with loose nuts, bolts, screws or any other type of fittings.
  - h) Please note that P.T.O. Shafts are not covered by the Wessex warranty.
  - i) Damage caused to the machine by impact or collision to the machine . Howsoever caused.
5. The warranty is for the benefit of the first user only.
6. Wessex International decisions will be final and binding.

**Note:**

**It is recommended that every machine is inspected after one hour of operation to check that all nuts, bolts, screws or any other types of fixings are tight and any loose fixings or components should be rectified as appropriate.**

**Further inspections should be carried out at regular intervals thereafter.**

## LINKING UP TO THE TRACTOR

---

1. Always hitch and unhitch on level ground for safety reasons.
2. When hitching up, never allow anyone to stand between the tractor and the implement.
3. Reverse the tractor up to the CRX Tri-deck and hitch up to the towing hitch. When using a drawbar pin ensure that it is secured with a lynch pin.
4. When in work the drawbar of the CRX Tri-deck should be level with the ground, to adjust simply remove drawbar holding bolts and turn the drawbar over for extra high adjustment.
5. Stop the tractor's engine and couple the P.T.O. shaft to the tractor putting the wide angle joint onto the tractor. Always hook the P.T.O. chains onto the lugs provided and shorten the chains to suit if required. The P.T.O. chains must not encircle the P.T.O. guard, as this will cause premature P.T.O. guard damage and wear. Ensure that the P.T.O. Shaft is correctly located and locked in place. (See P.T.O. shaft Instructions at the back of this manual).
6. If so equipped, connect the lighting plug into the tractor.
7. Connect the hydraulic hoses to the tractor. The CRX Tri Deck hydraulics are double acting and of the two hoses provided, one should be connected to the flow port of the double acting tractor spool and the other to the return port.
8. **IMPORTANT:** Ensure that the bottom link arms of the tractor do not come into contact the the P.T.O. Shaft when turning. We recommend that you remove or raise up the tractor link arms by adjustment of the arms.
9. For drawbar use the CRX Tri-deck can be equipped with a screw jack. To avoid damage to the jack, remove and stow before moving or operating the mowing decks.

## USING THE CRX TRI-DECK

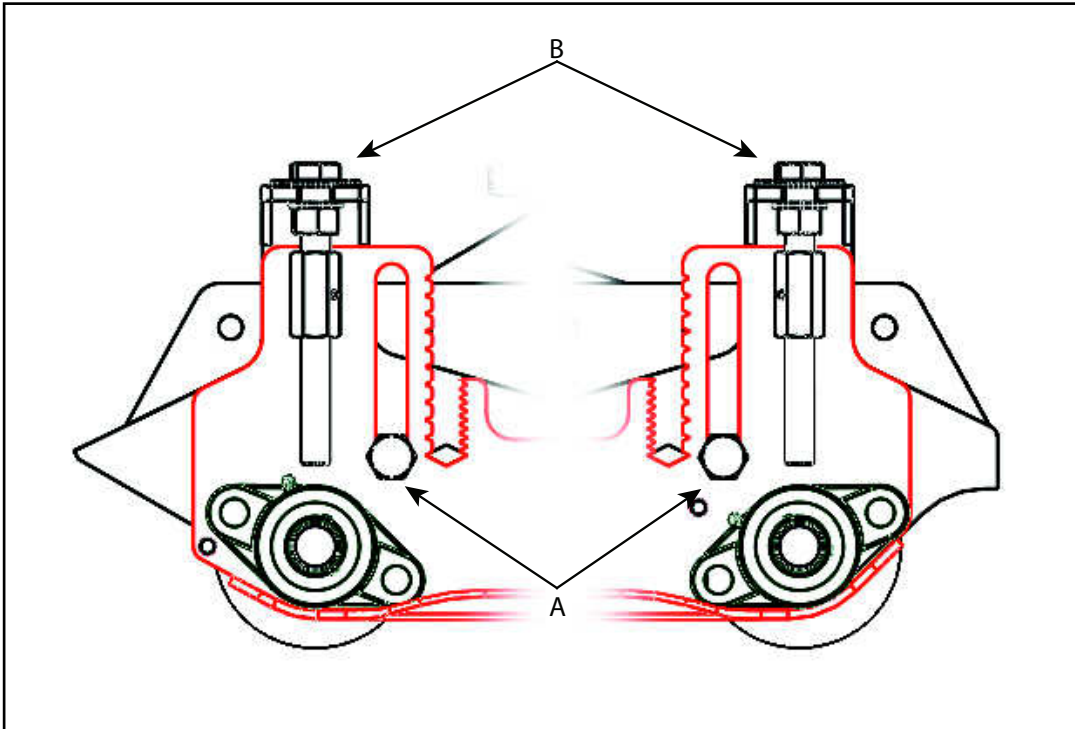
---

1. Having hitched up to the tractor you are now ready to lower the mowing decks to the ground.
2. **Important** Ensure that all bystanders are at a safe distance from the machine and that the machine is located on level ground before lowering the decks.
3. Operate the hydraulic spool function to take the weight off the safety catches of the side and rear deck carriers.
4. Release the safety catches by activating the catch lever beside the drawbar at the front of the machine, then slowly activate the hydraulic spool to lower the decks to the ground. Continue to actuate the spool lever in lowering position for three seconds after the decks contact the ground to ensure that the lift rams are fully extended. This will allow the cutting decks to follow the ground contours fully. While mowing, the spool level should then be placed in the neutral position.
5. When safe to do so, slowly engage the P.T.O. drive and select the forward speed carefully. Start off slowly until you are confident with the working width and capability of the machine.
6. **NEVER USE THE MOWER WITH P.T.O. SPEEDS IN EXCESS OF 540 RPM.**
7. When mowing longer thicker grass a slower forward speed will need to be selected.
8. When mowing the CRX Tri-deck is capable of following very undulating ground conditions and with care the side arms will happily run up or down banks of up to 30 degrees.
9. **When lifting the mowing decks up and out of work STOP THE P.T.O. drive before lifting. SERIOUS DRIVE LINE DAMAGE WILL RESULT IF THIS ADVICE IS IGNORED.**

## ALTERING THE CUTTING HEIGHT (Rollers)

---

1. Loosen, but do not remove the fixing bolts **(A)**. There are two on each side of the main deck.
2. Turn the adjusting screws **(B)** clockwise to lower the rollers, thus increasing the cutting height, or anticlockwise to raise the rollers, thus reducing the height of cut. Ensure that all screws are adjusted by the same amount otherwise the cut will be uneven. There is a triangular marker on the adjuster to assist in checking for even adjustment.
3. Ensure all the height adjusters are equally set and then tighten all fixing bolts, **(A)**.



## BELT ADJUSTMENT

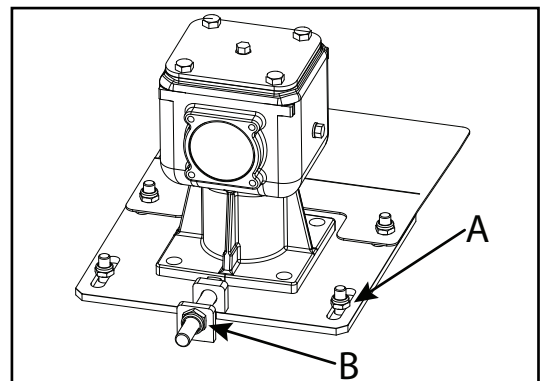
---

The drive belts are adjusted by moving the gearbox on its mounting bracket in relation to the mower deck.

First, stop the tractor engine and remove the starting key. Second, slacken the four holding bolts **(A)** on the base of the gearbox-mounting bracket. To tighten belts, turn the rear adjusting nut **(B)** anticlockwise, and to slacken the belts, turn clockwise.

The belts should be free to move approximately 10 mm under finger pressure. If they are too tight, there will be undue stress on the driven parts.

When belts are adjusted correctly, lock the adjusting nut in place, and tighten the gearbox holding bolts. Both drive belts should be tightened equally.



## MAINTENANCE

---

To keep your CRX Tri-deck in excellent working condition we recommend that you follow this maintenance programme:-

### REGULARLY:-

- Lubricate your CRX as indicated in this manual.
- Check all drive belts for tension and replace if cut, frayed or worn.
- Inspect all blades regularly and replace any that are badly worn, chipped or broken which may cause an imbalance in the blade rotor assembly.
- **DO NOT RUN MACHINE WITH UNBALANCED BLADE ROTOR ASSEMBLIES, THIS CAN CAUSE SERIOUS VIBRATION DAMAGE (NOT COVERED BY WARRANTY), TO THE MACHINE.**
- Inspect front and rear rollers and their bearings.
- Inspect for loose fixings and rectify immediately.
- Regularly clean all debris from under the belt covers.
- Keep Tyres inflated to the following pressures:  
Tyre Size 20x10-8 (18psi)  
Tyre Size 20.5x10-10 (22psi)

At the end of the grass cutting season always clean the CRX Tri-deck thoroughly and grease before winter storage.

Only use genuine Wessex parts in the event of replacing worn parts. This will ensure the continued safe use of your CRX Tri-deck and the validity of your warranty.

## LUBRICATION

---

It is very important that the machine receives its recommended maintenance routine to ensure a long trouble free working life and full validation of your warranty.

To ensure access to all grease points it is recommended that a grease gun with a flexible end fitting is used.

### DAILY:- (8 Hours)

- Grease Roller bearings.
- Inspect Blades, ensure all pairs are equal in condition to ensure the blade rotor assembly runs without vibration.

### WEEKLY:- (40 Hours)

- Grease height adjustment points.
- Grease Cutter Spindle bearings with Wessex XP High Performance grease.
- Check Gearbox oil level.
- Lubricate all adjusting threads.
- Grease P.T.O. Shaft bearings.
- Grease P.T.O. Tube slides.
- Oil Wing release cables.



## TROUBLESHOOTING

---

FAULT	CAUSE	REMEDY
Leaving wheel track uncut	1. Forward speed too fast 2. Cutting height too high 3. Excessive blade wear	Reduce forward speed Lower cutting height Replace blades
Bad quality of cut	1. Forward speed too fast 2. Excessive blade wear 3. Belts slipping	Reduce forward speed Replace blades Tighten belts
Narrow strip uncut	1. Possibly missing or broken blade	Inspect blades and replace as necessary
Excessive vibration	1. Damaged or missing blades 2. Main spindle bearing play 3. Loose part	Inspect and replace blades Inspect bearing, replace if damaged Check all nuts and bolts are tight
Excessive scalping	1. Cutting height too low	Raise cutting height.

## WINTER STORAGE

---

Before winter storage, the CRX Tri-deck should be thoroughly inspected:-

- Repair or replace any worn or broken parts.
- Check oil level in the gearbox. Top up or change with EP90 gear oil.
- Take special care to look at the blades, rotor and the bearings.
- Remove the belts and ensure that the rotors are free-spinning.
- Make sure that the belts are in good condition before re-fitting.
- Thoroughly wash the machine to remove all oil, grease, debris and materials.
- Grease all grease points before storage to avoid any corrosion.
- After pressure washing always run mower for a time to expel any water from bearings.
- It is recommended to apply a light oil to the under-deck surfaces to protect the machine from corrosion while in storage.

## CUTTING BLADES

---

- Inspect the Cutting blades regularly.
- Badly worn or broken blades will unbalance rotors causing vibration.
- **Do not use with unbalanced rotors.**
- Always replace blades on both ends of bars to avoid imbalance.
- Always lift machine and prop the machine up with axle stands. Never get underneath an unsupported machine.
- Replace blade tips using new nylock locking nuts every time.

## SPECIFICATIONS

---

### Wessex Proline CRX Multicut Mowers

Model:	CRX-320
Cutting Width:	3.2m
Overall Width:	3.35m
Overall Length:	3.72m
Weight:	1360kg
Cutting Height Range (Rollers):	10-110mm
No. of Cutting Spindles:	9 (18 blades)
Gearbox Oil:	EP90

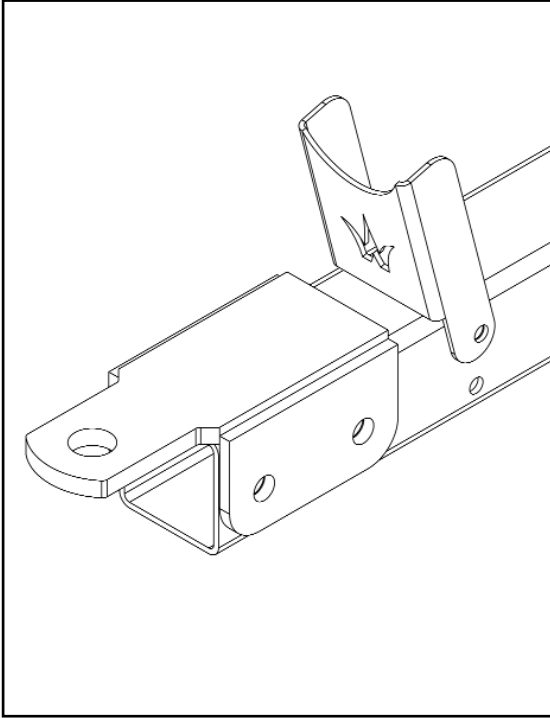


## CRX Trideck Hitch Guide

---

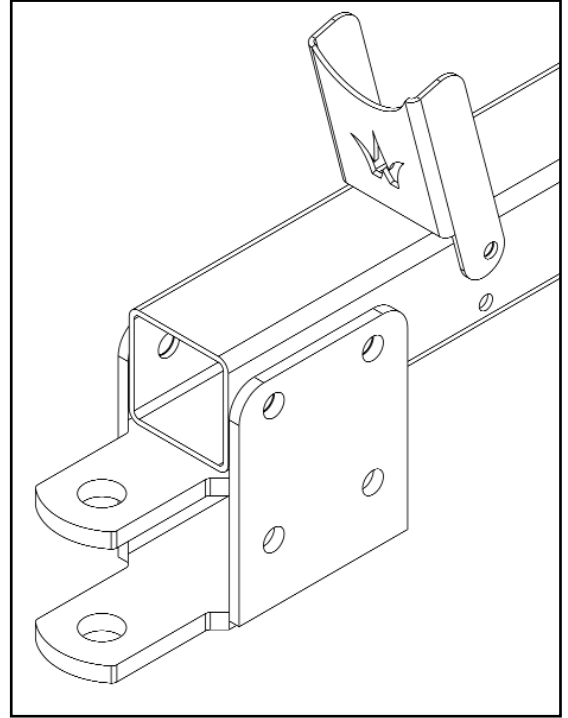
Standard drawbar hitch for compact tractor double clevis towing jaw.

Part number:- **WX-47080**



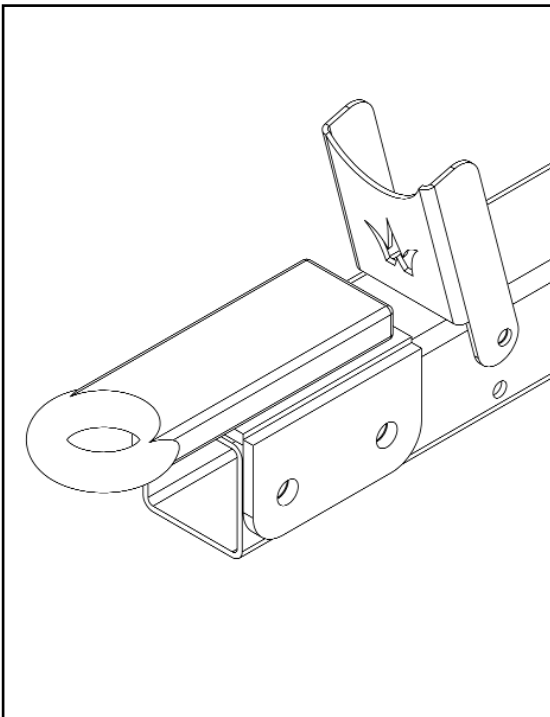
Double clevis jaw for single clevis drawbar use (USA) Two height adjustments.

Part number:- **WX-49080**



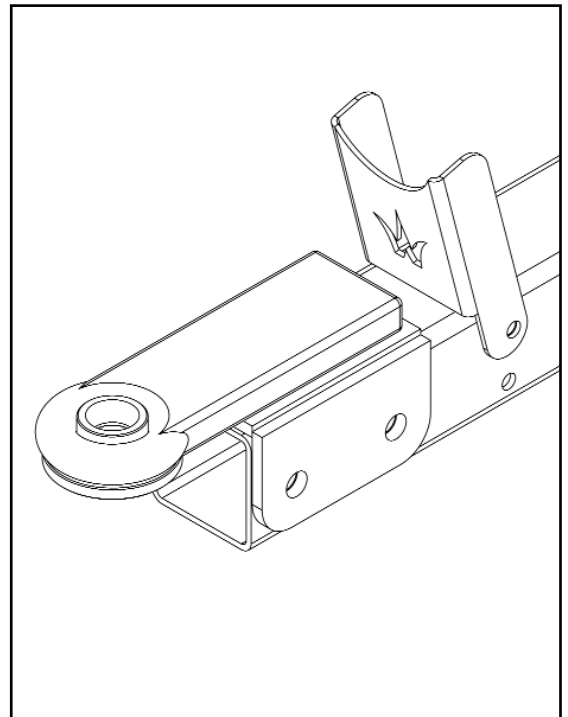
Ring hitch for tractor pick-up hitch.

Part number:- **WX-47180**



Ring hitch and removable nylon puck for double clevis drawbar use.

Part numbers:- **WX-47180** and **WX-48780**



## PTO SHAFT OPERATION AND MAINTENANCE

---

### IMPORTANT!

**P.T.O. drive shafts must only be used for their intended purpose.**

P.T.O. drive shafts are designed for specific machine types and power requirements.

They must not be replaced by other models.

Ensure that the P.T.O. drive shaft is securely connected.

**Only use a completely protected drive system:**

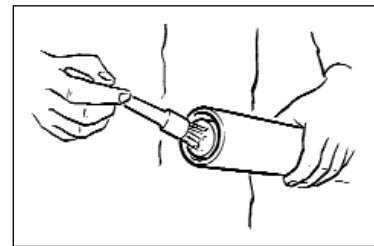
P.T.O. drive shaft with complete guard and complementary guard on tractor and implement. A complete guard is essential in all working positions.

## LUBRICATION

---

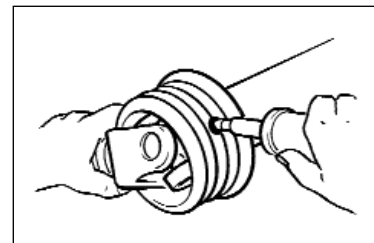
Lubricate with quality grease before starting work and every 40 operating hours.

Ensure the P.T.O. guard bearings are lubricated, the end ball shaped covers need retracting to expose all grease nipples.



Clean and grease the P.T.O. drive shaft before each prolonged period of non-use.

Grease the guard tubes in winter to prevent freezing.



## COUPLING THE P.T.O. SHAFT

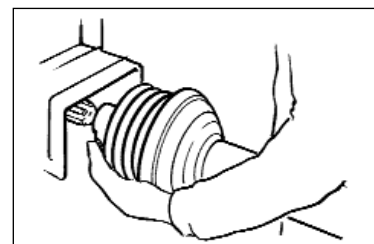
---

Stop the tractor engine and remove the starting key.

Clean and grease the P.T.O. and PIN

### **Q.-d pin**

Press q.-d. pin and simultaneously push P.T.O. drive shaft onto P.T.O. until pin engages.





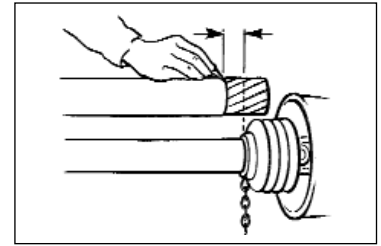
# PTO SHAFT OPERATION AND MAINTENANCE

---

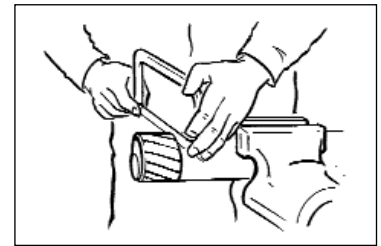
## LENGTH ADJUSTMENT

---

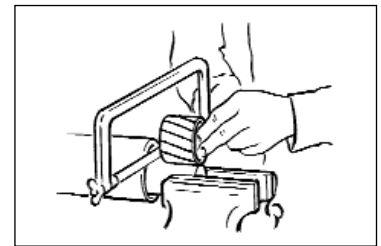
To adjust the length, hold the half-shafts next to each other in the shortest working position and mark them.



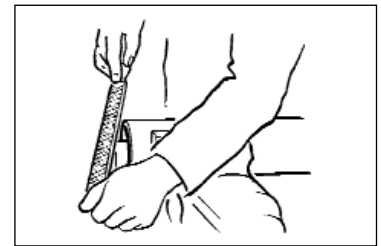
Shorten inner and outer guard tubes equally.



Shorten inner and outer sliding profiles by the same length as the guard tubes.



Round off all sharp edges and remove burrs.  
Grease sliding profiles.

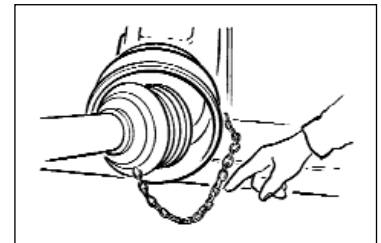


No other changes may be made to the P.T.O. drive shaft and guard.

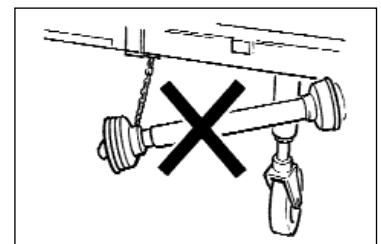
## CHAINS

---

Chains must be fitted so as to allow sufficient articulation of the shaft in all working positions.

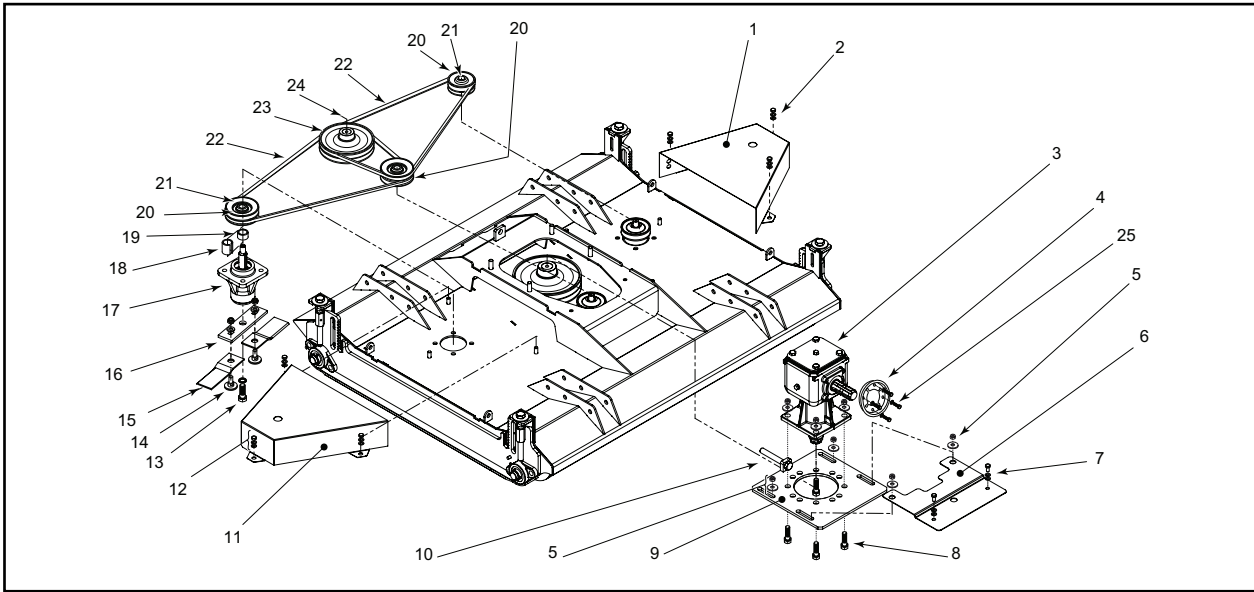


Do not let the chains encircle the P.T.O. guard in use as this will shorten the life of the P.T.O. guard.



The PTO drive shaft must not be suspended from the chains! Please use the P.T.O. Support Prop provided.

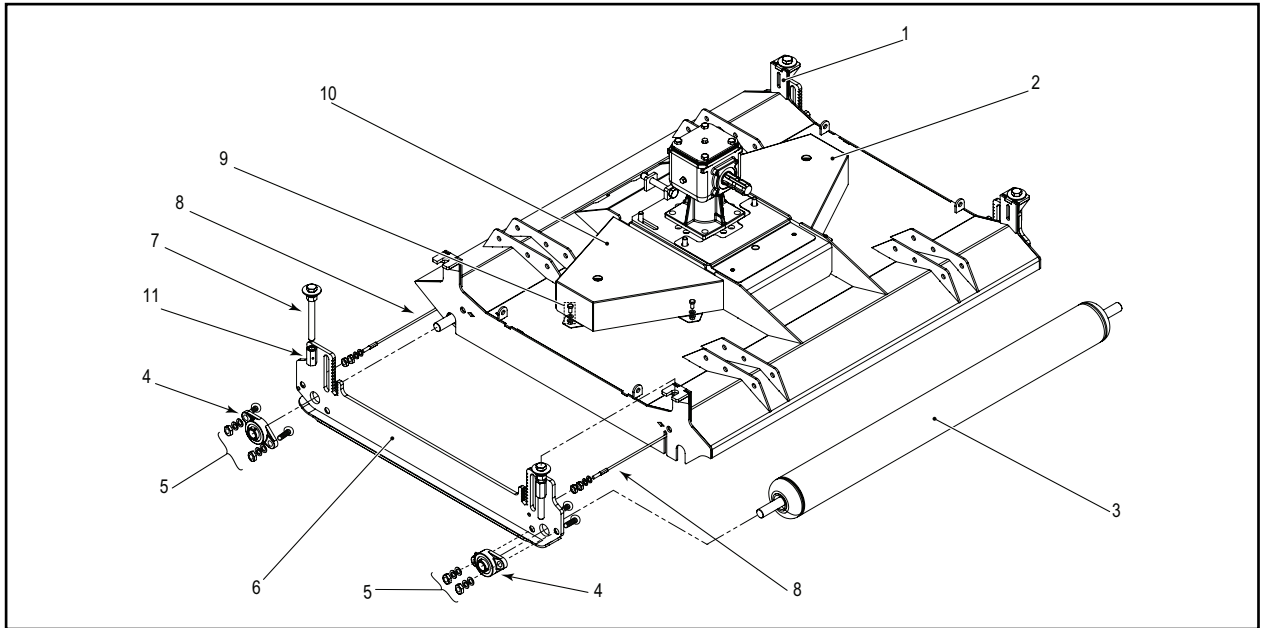
## PARTS ILLUSTRATION - CRX120 DRIVE ASSEMBLY



## PARTS LIST - CRX120 DRIVE ASSEMBLY

Item No.	Part No.	Description	Qty.
1	WX-21077	Left Hand Belt Guard	1
2	WX-16503	Belt Guard Fastening Set	2
3	WX-5257	Gearbox - Cutting Deck	1
4	WX-8481	PTO Cover Adapter	1
5	WX-4603	Gearbox Adjuster Plate Fastening Set	4
6	WX-18877	Gearbox Plate Cover	1
7	WX-16503	Gearbox Plate Cover Fastening Set	2
8	WX-0801	Gearbox Fastening Set	1
9	WX-27976	Gearbox Adjuster Plate	1
10	WX-1257	Belt Tension Adjuster	1
11	WX-21177	Right Hand Belt Guard	1
12	WX-16503	Belt Guard Fastening Set	2
13	WX-11770	Blade Bar Fastening Set	3
14	WX-1739	Blade Fastening Set	6
15	WX-11370	Blade Tip	6
16	WX-11670	Blade Bar	3
17	WX-5966B	Spindle Assembly	3
18	WX-48980	Spacer for Taper Lock Pulley	3
19	WX-18166	Spacer for Non-Taper Lock Pulley	3
20	WX-13862	2 Row Pulley	3
21	WX-14062	Taper Lock	3
22	WX-6434	Deck Belt	2
23	WX-3962	Gearbox Pulley	1
24	WX-0547	Gearbox Pulley Key	1
25	WX-5103	PTO Adapter Fastening Set	1

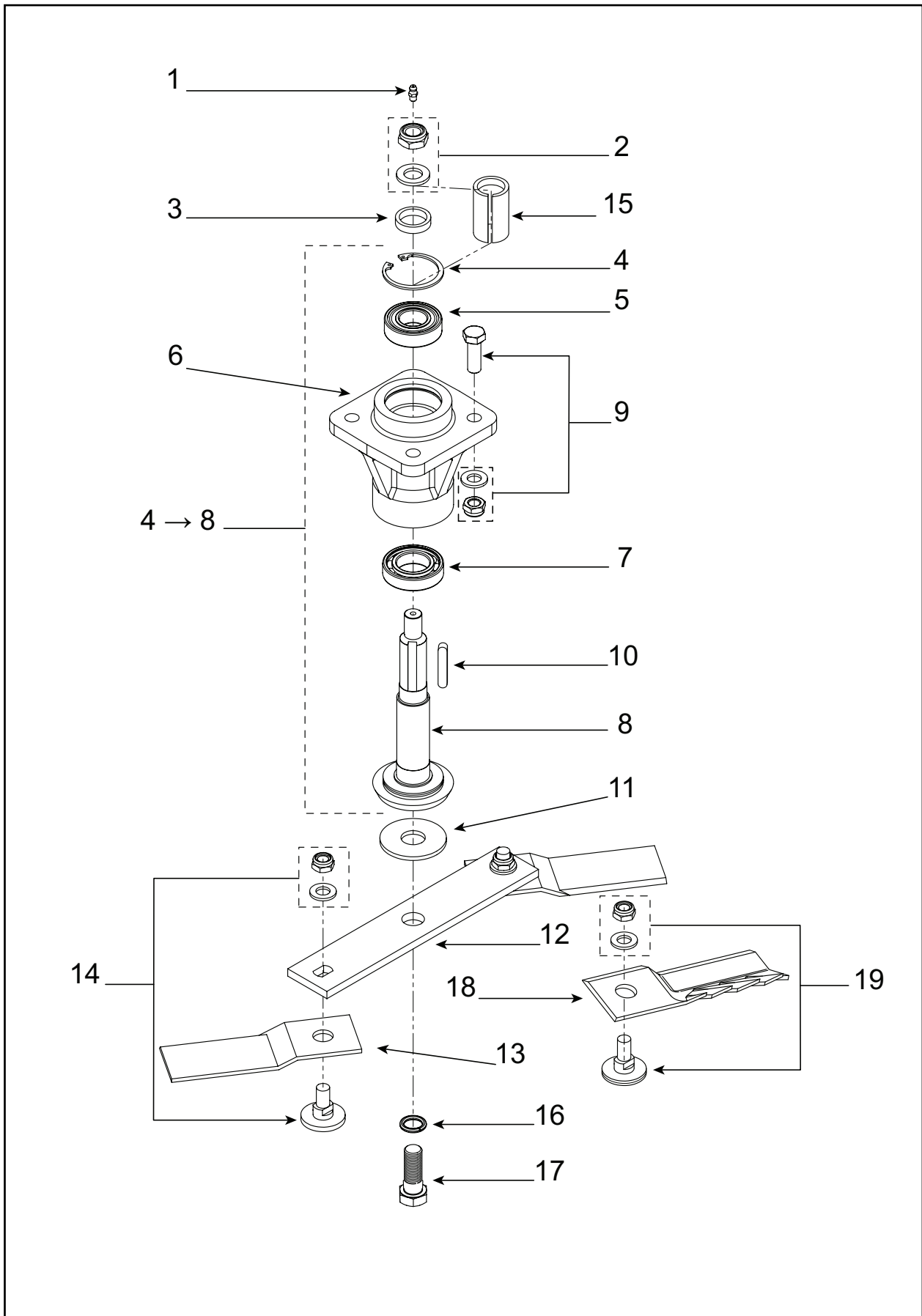
## PARTS ILLUSTRATION - CRX120 ROLLERS



## PARTS LIST - CRX120 ROLLERS

Item No.	Part No.	Description	Qty.
1	WX-43676	CRX 120 - Adjustable Side Plate - Left Hand	1
2	WX-21077	CRX120 - Left Hand Belt Guard	1
3	WX-11355	CRX120 - Roller Assembly	2
4	WX-0541	Bearing Unit	4
5	WX-6501	Bearing Unit Fastening Set	4
6	WX-43776	CRX120 - Adjustable Side Plate - Right Hand	1
7	WX-1105	CRX Roller Adjustment Screw	4
8	WX-9330	CRX120 - Roller Scraper Wire	2
9	WX-16503	Belt Guard Fastening Set	2
10	WX-21177	CRX120 - Right Hand Belt Guard	1
11	WX-0246	Grease Nipple	4

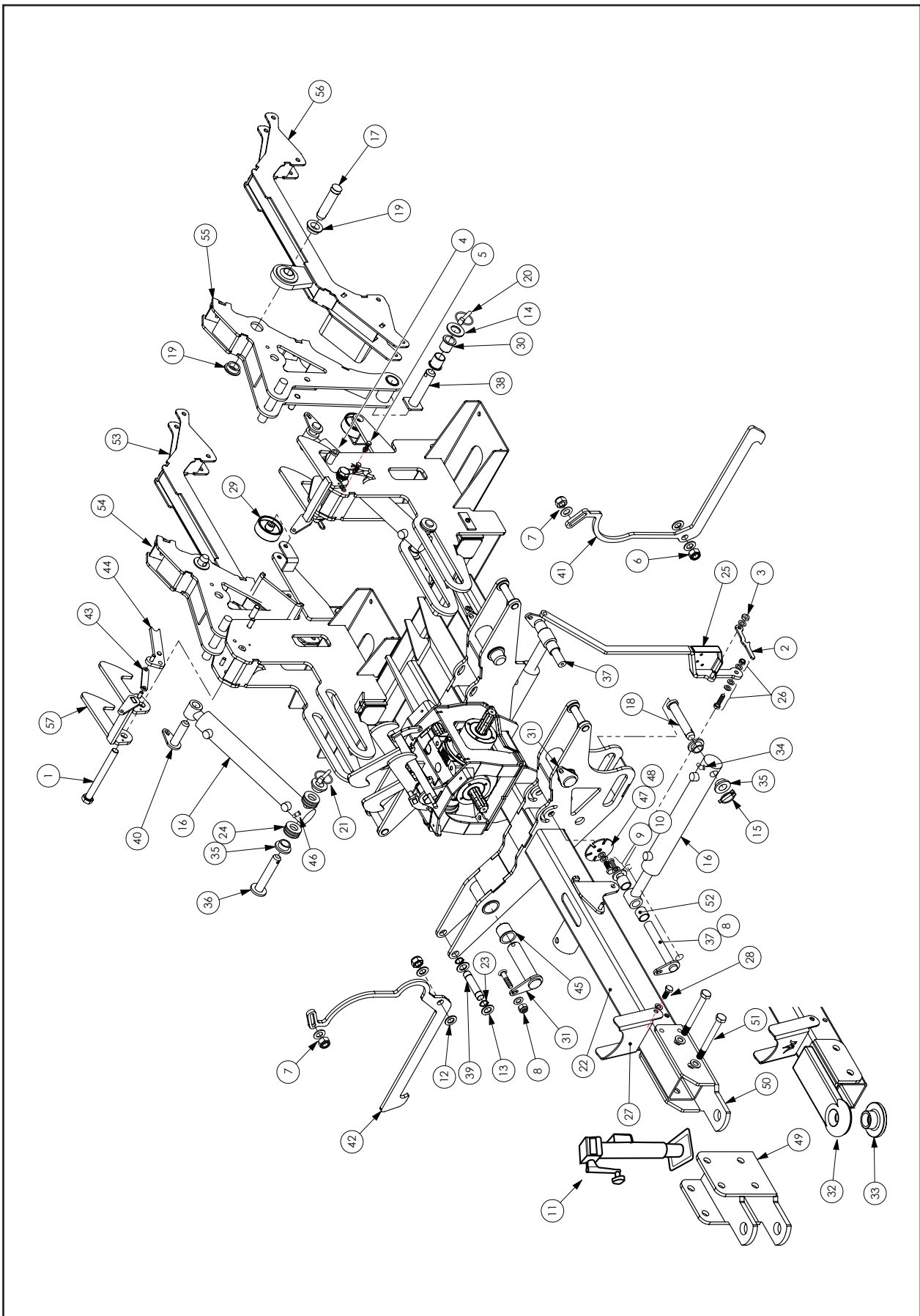
# PARTS ILLUSTRATION - SPINDLE & BLADE ASSEMBLY



**PARTS LIST - SPINDLE & BLADE ASSEMBLY**

<b>Item No.</b>	<b>Part No.</b>	<b>Description</b>	<b>QTY per spindle</b>
1	WX-0246	Grease Nipple	1
2	WX-0814	Pulley Fastening Set	1
3	WX-18166	Pulley Spacer for non Taper-Lock pulleys	1
4	WX-1722	Circlip	1
5	WX-0838	Bearing	1
6	WX-5966	Spindle Bearing Housing	1
7	WX-0938	Bearing	1
8	WX-6066	Cutter Spindle	1
4-8	WX-5966B	Spindle Assembly	1
9	WX-3503	Housing Fastening Set	1
10	WX-0147	Key	1
11	WX-0220	Fibre Washer	1
12	WX-11670	Blade Bar	1
13	WX-11370	Standard Blade Tip	2
14	WX-1739	Standard Blade Bolt	2
15	WX-48980	35mm Spindle Spacer for Taper-Lock pulleys	1
16	WX-3525	Disc Spring	1
17	WX-11770	Blade Bar Bolt	1
18	WX-11470	Mulching Blade Tip	2
19	WX-3039	Mulching Blade Bolt	2

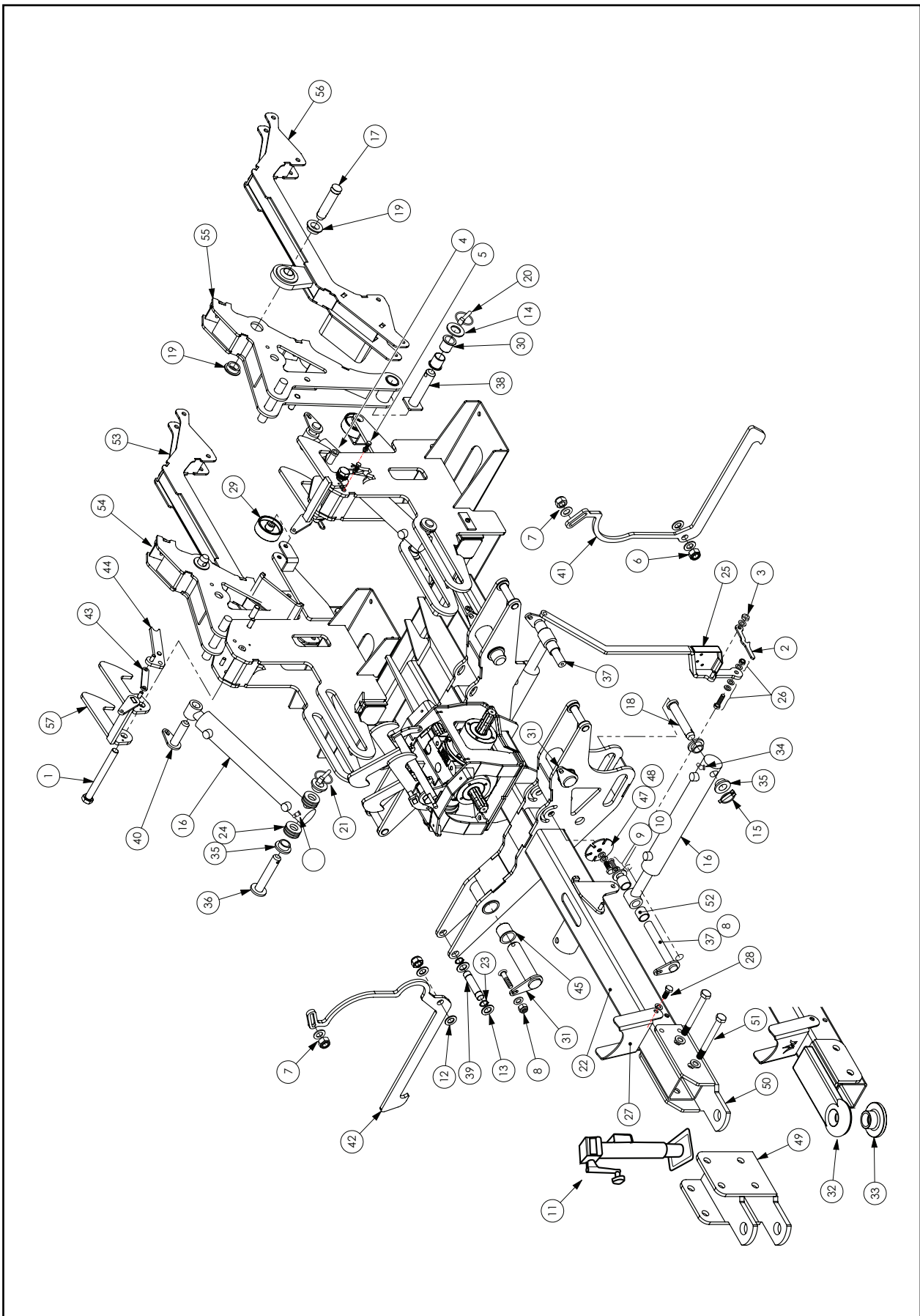
# PARTS ILLUSTRATION - MAINFRAME



## PARTS LIST - MAINFRAME

Item No.	Part No.	Description	QTY
1	WX-17403	Rear Deck Latch Fastening Set	2
2	WX-46780	Latch Release Lever	1
3	WX-5803	Latch Release Lever Fastening Set	1
4	WX-19501	Latch Stop Bolt	2
5	WX-19601	Spring Retainer Bolt	4
6	F-XNN220	Nylock	2
7	WX-5803	ProLift Slide Fastening Set	2
8	WX-36001	Pin Fastening Set	6
9	WX-20101	Ram Pin Securing Set	2
10	WX-1520	Special Washer	2
11	WX-20456	Jack	1
12	F-XWF220	Washer	4
13	F-XWF222	Washer	8
14	F-XWF230	Washer	2
15	WX-0127	Lynch Pin	2
16	WX-1854	Double Acting Ram	4
17	WX-2226	Link Pin	2
18	WX-2526	Ram Pin	2
19	WX-3828	Bush	4
20	WX-0127	Lynch Pin	2
21	WX-0227	Lynch Pin	2
22	WX-5291	Chassis	1
23	WX-5622	External Circlip	8
24	F-XWF224	Washer	12
25	WX-46580	Cable Pull Lever	1
26	WX-19701	Cable Pull Lever Fastening Set	1
27	WX-49480	PTO Stand	1
28	WX-19801	PTO Stand Fastening Set	1
29	WX-6952	Rear Deck Roller Wheel	2
30	WX-8738	Bush	4
31	WX-9028	Wing Pivot Pin	4
32	WX-47180	Ring Hitch	1
33	WX-48780	Ring Hitch Adapter Bush	1
34	WX-0346	Grease Nipple (45 degree)	2
35	WX-13128	Top Hat Bush	8
36	WX-14128	Ram Pin	2
37	WX-14228	Ram Pin	2
38	WX-14428	Rear Linkage Pivot Pin	2
39	WX-14528	Side Deck Latch Bar	4
40	WX-14628	Ram Pin - 100mm long	2

# PARTS ILLUSTRATION - MAINFRAME

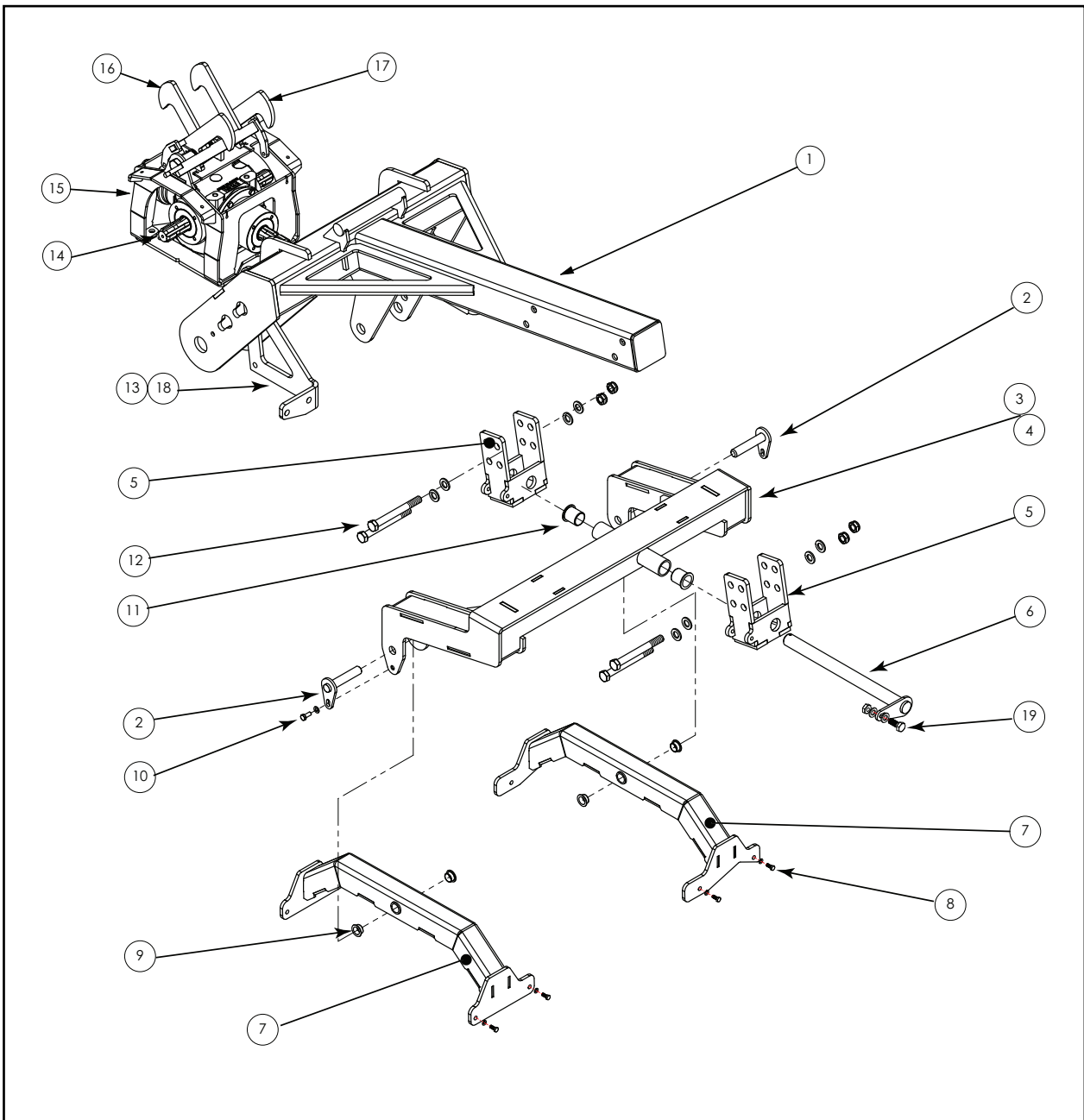




## PARTS LIST - MAINFRAME

Item No.	Part No.	Description	QTY
41	WX-47780	Wing ProLift Hook - Left Hand	2
42	WX-47880	Wing ProLift Hook - Right Hand	2
43	WX-47980	Rear Kerb Tie Rod	2
44	WX-48180	Rear ProLift Arm - Right Hand	1
45	WX-9038	Bush	8
46	WX-0246	Grease Nipple (Straight)	2
47	WX-34976	Pull Plate Front	1
48	WX-36501	Pull Plate Fastening Set	1
49	WX-49080	Double Clevis Hitch	1
50	WX-47080	Clevis Hitch	1
51	WX-19901	Clevis Hitch Fastening Set	1
52	WX-47480	Ram Spacer	4
53	WX-47580	Rear Deck Gimbal Bracket - Right Hand	1
54	WX-47680	Rear Deck Pick Up Arm - Right Hand	1
55	WX-46180	Rear Deck Pick Up Arm - Left Hand	1
56	WX-46280	Rear Deck Gimbal Bracket - Left Hand	1
57	WX-46380	Rear Deck Latch Hooks - Right Hand	1

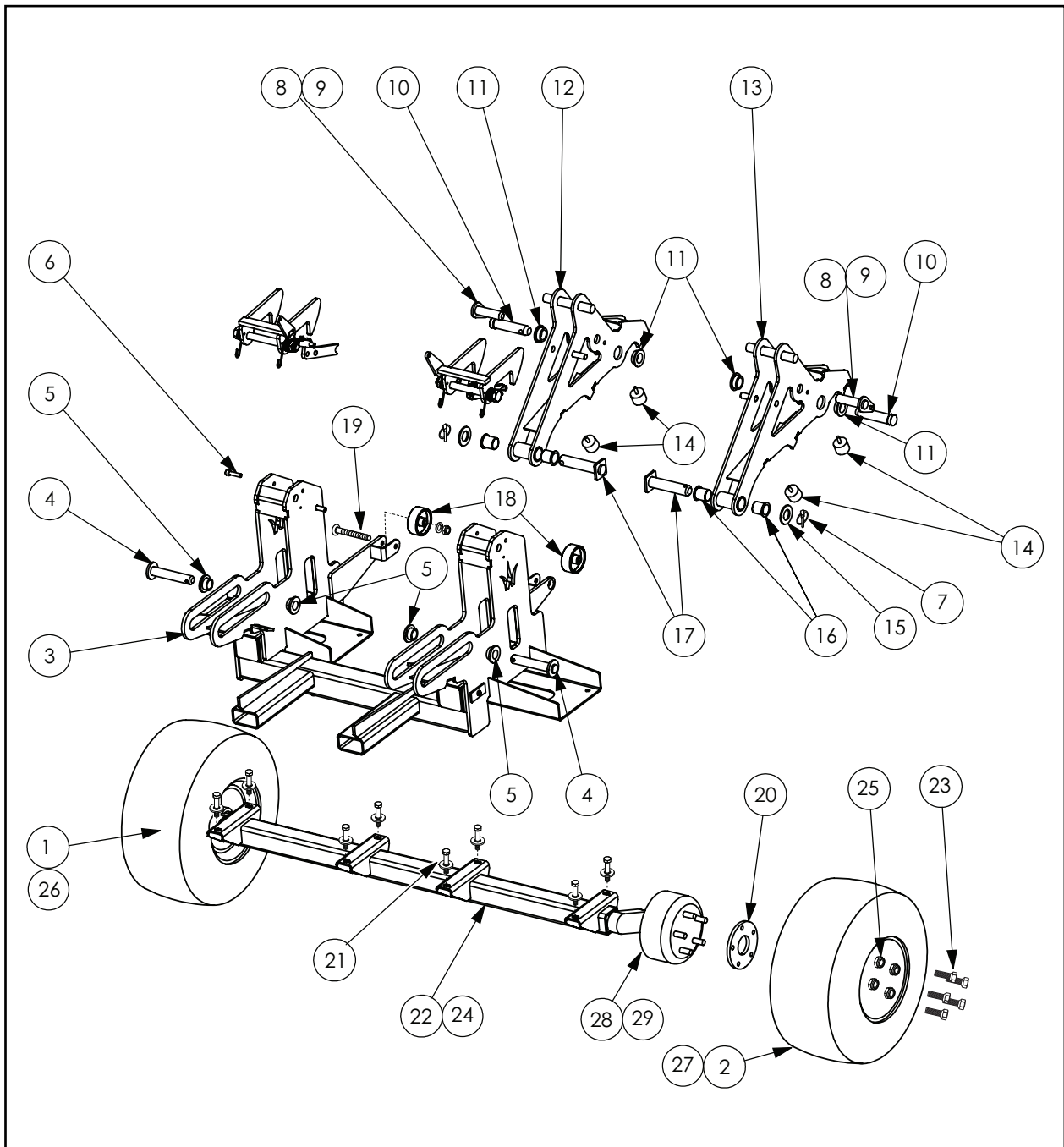
# PARTS ILLUSTRATION - WING FRAME ASSEMBLY



## PARTS LIST - WING FRAME ASSEMBLY

Item No.	Part No.	Description	Qty.
1	WX-5091	Wing Arm Assembly	2
2	WX-11528	Lower Gimbal Pin	4
3	WX-42280	Gimbal - Right Hand Side	1
4	WX-42380	Gimbal - Left Hand Side	1
5	WX-49380	Wing Gimbal Mount Bracket	4
6	WX-11428	CRX - Gimbal to Wing Pin	2
7	WX-45480	Gimbal Lower	4
8	WX-35003	Gimbal Bracket Fastening Set	4
9	WX-10028	Bush	8
10	WX-36001	Pin Fastening Set	6
11	WX-8738	Bush	4
12	WX-36601	Gimbal Mount Bracket Fastening Set	2
13	WX-46880	Bolt on Deck Guide Hook - Left Hand Side	2
14	WX-15357	4 Way Gearbox	1
15	WX-35180	Gearbox Saddle	1
16	WX-48280	Centre Latch Hook - Inner	1
17	WX-48380	Centre Latch Hook - Outer	1
18	WX-46980	Bolt on Deck Guide Hook - Right Hand Side	2
19	WX-36701	Pin Fastening Set	2

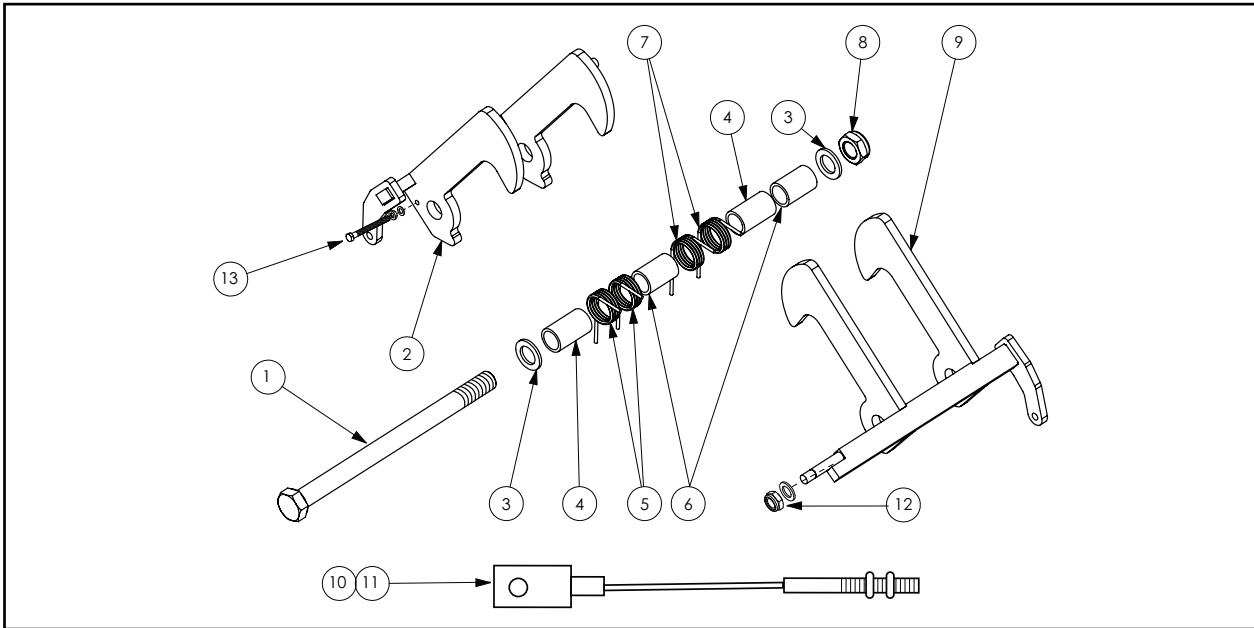
# PARTS ILLUSTRATION - REAR CHASSIS



## PARTS LIST - REAR CHASSIS

Item No.	Part No.	Description	Qty.
1	WX-6752	Wheel and Tyre Assembly (5 Stud)	2
2	WX-6752A	Tyre Only (5 Stud Wheel)	2
3	WX-5291	Chassis	1
4	WX-14128	Ram Pin	2
5	WX-13128	Top Hat Bush for Float Pins	8
6	WX-19501	Latch Stop Bolt	2
7	WX-0127	Lynch Pin	2
8	WX-20001	Ram Pin Fastening Set	2
9	WX-14628	Ram Pin - 100mm Long	2
10	WX-2226	Link Pin	2
11	WX-3828	Bush	4
12	WX-47680	Rear Deck Pickup Arm - Right Hand	1
13	WX-46180	Rear Deck Pickup Arm - Left Hand	1
14	WX-39080	Rubber Buffer	4
15	F-XWF230	Washer	2
16	WX-8738	Bush	4
17	WX-14428	Rear Linkage Pivot Pin	2
18	WX-6952	Rear Deck Roller Wheel	2
19	WX-36401	Deck Roller Wheel Fastening Set	2
20	WX-18351	Wheel Hub Spacer (5 Stud Wheel)	2
21	WX-3503	Axle Fastening Set	8
22	WX-18251	Trideck Axle (5 Stud Wheel)	1
23	WX-11553	Wheel Bolt (5 Stud Wheel)	10
24	WX-18951	Trideck Axle (4 Stud Wheel)	1
25	WX-11653	Wheel Nut (4 Stud Wheel)	8
26	WX-4152	Wheel (4 Stud)	2
27	WX-4152A	Tyre (4 Stud Wheel)	2
28	WX-1538	Wheel Bearing Outer (4 Stud Wheel)	2
29	WX-0838	Wheel Bearing Inner (4 Stud Wheel)	2

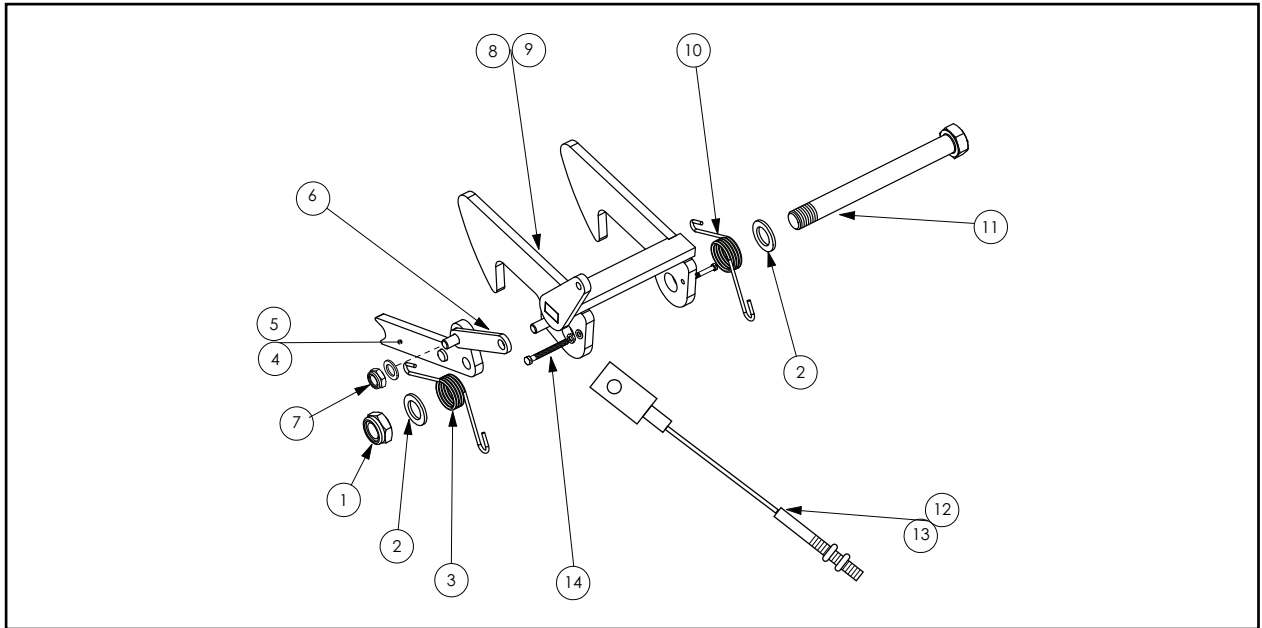
## PARTS ILLUSTRATION - CENTRE LATCH ASSEMBLY



## PARTS LIST - CENTRE LATCH ASSEMBLY

Item No.	Part No.	Description	Qty.
1	F-XBM20260	Bolt	1
2	WX-48380	Central Latch Hook - Outer	1
3	F-XWF220	Washer	4
4	WX-38780	Central Catch Tube - Long	2
5	WX-6325	Left Hand Torsion Spring	2
6	WX-36480	Wing Latch - Central Hook Spacer Tube	2
7	WX-6425	Right Hand Torsion Spring	2
8	F-XNN220	Nylock	2
9	WX-48280	Centre Latch Hook - Inner	1
10	WX-9430	CRX320 Pull Cable - Front - Left Hand Side	1
11	WX-9530	CRX320 Pull Cable - Front - Right Hand Side	1
12	WX-5803	Tie Rod Fastening Set	2
13	WX-19601	Spring Retainer Bolt	4

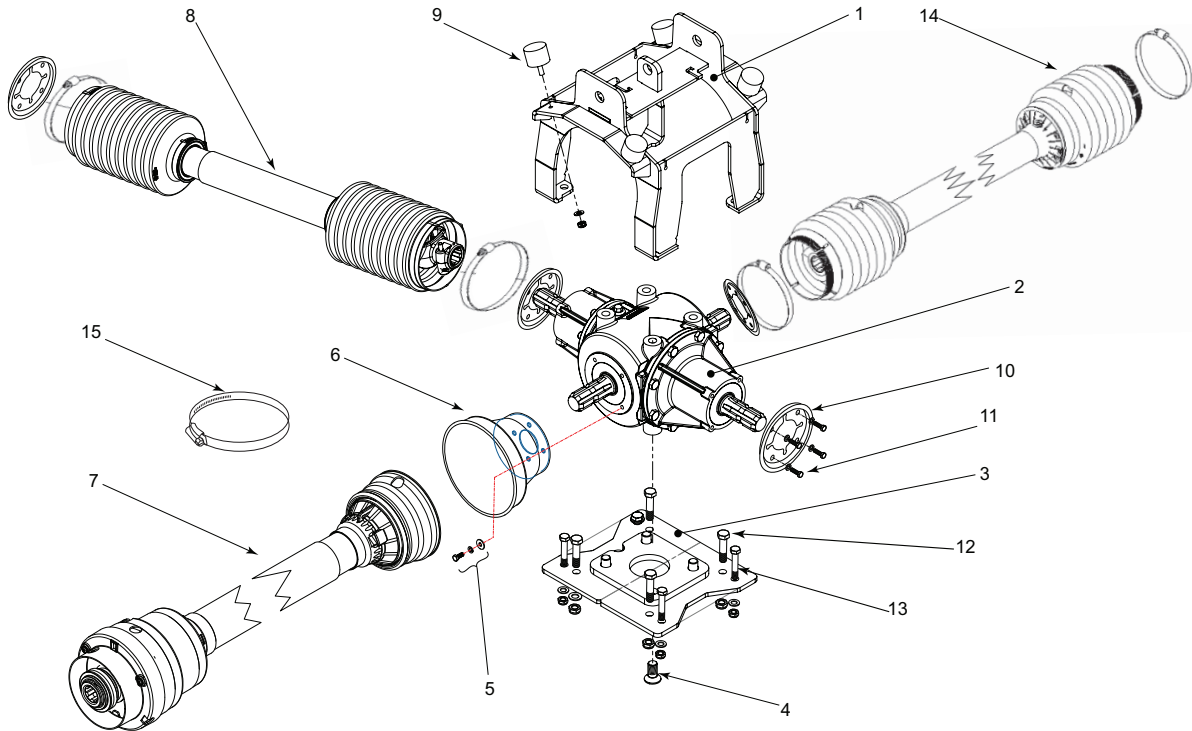
## PARTS ILLUSTRATION - REAR LATCH ASSEMBLY



## PARTS LIST - REAR LATCH ASSEMBLY

Item No.	Part No.	Description	Qty.
1	F-XNN220	Nylock	2
2	F-XWF220	Washer	4
3	WX-6125	Left Hand Torsion Spring	2
4	WX-48080	Rear ProLift Arm - Left Hand (Shown)	1
5	WX-48180	Rear ProLift Arm - Right Hand	1
6	WX-47980	Rear Kerb Tie Rod	2
7	WX-5803	Tie Rod Fastening Set	4
8	WX-46480	Rear Deck Latch Hooks - Left Hand (Shown)	1
9	WX-46380	Rear Deck Latch Hooks - Right Hand	1
10	WX-6025	Right Hand Torsion Spring	2
11	F-XBM20220	Bolt	2
12	WX-9630	CRX320 Pull Cable - Rear - Left Hand Side	1
13	WX-9730	CRX320 Pull Cable - Rear - Right Hand Side	1
14	WX-19601	Spring Retainer Bolt	4

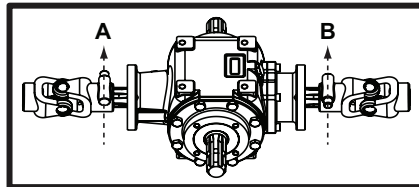
## PARTS ILLUSTRATION - CRX CENTRAL GEARBOX



**⚠ CAUTION!**

ALIGN THE YOKES 'A' & 'B' IN THE ORIENTATION SHOWN WHEN CONNECTING THE WING DECK PTO SHAFTS TO THE GEARBOX. THIS IS TO ALLOW THE WINGS TO FOLD UP AND PREVENT SERIOUS DAMAGE TO THE GEARBOX AND PTO SHAFT.

WHEN CONNECTING THE PTO SHAFTS, MOUNT ONE SIDE FIRST WITH THE YOKE LAYING FLAT AS SHOWN. THE OPPOSITE SIDE MUST ALSO BE MOUNTED WITH THE YOKE AS FLAT AS POSSIBLE.





## PARTS LIST - CRX CENTRAL GEARBOX

Item No.	Part No.	Description	QTY
1	WX-35180	Saddle	1
2	WX-15357	4 Way Gearbox	1
3	WX-15457	Gearbox Plate	1
4	F-XCS1635	Countersunk Bolt	4
5	WX-5103	Bucket Guard Fastening Set	1
6	WX-5177	Bucket Guard	1
7	WX-8281	Tractor PTO Shaft	1
Not Shown	WX-8281A	Complete Cover For Tractor PTO	1
8	WX-8981	Side Wing PTO Shaft	2
Not Shown	WX-8981A	Cover for Side Wing PTO Shaft	2
9	WX-39080	Rubber Buffer	4
10	WX-8481	Adapter For PTO Cover	6
11	WX-5103	PTO Adapter Fastening Set	1
12	WX-35901	Gearbox Plate Fastening Set	1
13	WX-16403	Saddle Fastening Set	4
14	WX-8781	Rear PTO Shaft	1
Not Shown	WX-8781A	Cover for Rear PTO Shaft	1
15	WX-9002	Jubilee Clip	5





## NOTES

---



## *Certificate of CE Conformity*

Machine Model:

CRX-320

Description:

ROLLER MOWER

*I hereby certify that the machine detailed hereon  
conforms to:*

**European Directives 2006/42/EC  
Supply of Machinery Regulations 2008  
As amended 91/368EEC – 93/44EEC – 93/68EEC  
HSE AIS 33**

Signed:

A handwritten signature in black ink, appearing to be 'RAN', written over a dotted line.

Quality Manager

Date:

MARCH 2018

### **Wessex International**

Charlton House, Caxton Place, East Portway Industrial Estate, Andover, Hampshire SP10 3QN  
Telephone: 01264 345870 Fax: 01264 345 880

[www.wessexintl.com](http://www.wessexintl.com)



**Wessex International**  
**Charlton House, Caxton Close, East Portway Industrial Estate, Andover Hampshire. SP10 3QN**  
**Telephone: +44 (0)1264 345870 Fax +44 (0)p1264 345880**  
**e-mail: [sales@wessexintl.com](mailto:sales@wessexintl.com)**

**[www.wessexintl.com](http://www.wessexintl.com)**



## WESSEX PROLINE RMX, CRX & FRX INSTALLATION RECORD

Upon installation of this machine, it is the Dealers responsibility to fill out the Installation Record below and return to Wessex International either by Fax to 01264 345880 or Email warranty@wessexintl.com.

IF THIS FORM IS NOT RETURNED, WE CANNOT ISSUE THE CUSTOMER THE APPLICATION FORM TO REGISTER FOR THE EXTENDED WARRANTY ON THEIR MACHINE.

### END USER DETAILS

NAME : \_\_\_\_\_

ORGANISATION : \_\_\_\_\_

ADDRESS : \_\_\_\_\_

\_\_\_\_\_

\_\_\_\_\_

TELEPHONE : \_\_\_\_\_ MOBILE : \_\_\_\_\_

EMAIL : \_\_\_\_\_

DEALER: \_\_\_\_\_ BRANCH : \_\_\_\_\_

MACHINE MODEL : \_\_\_\_\_ SERIAL NO: \_\_\_\_\_

INSTALLATION DATE : \_\_\_\_\_

THE MACHINE DETAILED ABOVE HAS BEEN CORRECTLY INSTALLED AND THE FOLLOWING POINTS HAVE BEEN DISCUSSED WITH THE CUSTOMER :

- |  |  |
|--|--|
| 1 Correct Machine Operation  |  |
| 2 Operational Health & Safety  |  |
| 3 Machine Setting and Adjustments  |  |
| 4 Maintenance  |  |
| 5 Importance of tensioning belts after initial 2 - 3 hours work and routinely thereafter |  |

### Delivery Checklist

- |  |  |
|--|--|
| Oil in gearboxes   |  |
| All PTO Shafts properly attached with Safety Chains attached |  |
| All PTO Shafts greased                                       |  |
| All shields, guards and deflectors in place                  |  |
| Check wheel nuts are tight                                   |  |
| All fixings tight  |  |

Inspected by : \_\_\_\_\_

### **IMPORTANT INFORMATION TO PREVENT DAMAGE - RELEVANT TO ALL TRAILED MACHINES**

Ensure that the tractor link arms are removed or at least dropped to prevent contact with the PTO shaft when turning.  
Avoid sharp turns where the rear wheel of the tractor comes into contact with the drawbar or PTO shaft. Turning too sharp can also cause damage to the PTO shaft, it's universal joints and tractor tyres.

DEALER SIGNATURE : \_\_\_\_\_ NAME : \_\_\_\_\_

DATE : \_\_\_\_\_

Upon receipt of this form, we will forward the Extended Warranty Application Form to the End User.

**THANK YOU FOR FACILITATING THE SALE OF ANOTHER WESSEX PROLINE MACHINE!**

**WESSEX INTERNATIONAL**

Charlton House, Caxton Close, East Portway Industrial Estate, Andover, Hampshire SP10 3QN

T : 01264 345870 F : 01264 345880 E : sales@wessexintl.com